

PROP. CURVE 70280
 PI STA. = 632+16.11
 $\Delta = 49^\circ 14' 23''$ (RT)
 $D = 63^\circ 39' 43''$
 $R = 90.00'$
 $T = 41.24'$
 $L = 77.35'$
 $E = 9.00'$
 $e = \dots$
 $T.R. = \dots$
 S.E. RUN = \dots
 P.C. STA = 631+74.87
 P.T. STA = 632+52.22

PROP. CURVE 70290
 PI STA. = 632+92.77
 $\Delta = 28^\circ 40' 21''$ (LT)
 $D = 57^\circ 17' 45''$
 $R = 100.00'$
 $T = 25.56'$
 $L = 50.04'$
 $E = 3.21'$
 $e = \dots$
 $T.R. = \dots$
 S.E. RUN = \dots
 P.C. STA = 632+67.22
 P.T. STA = 633+17.26

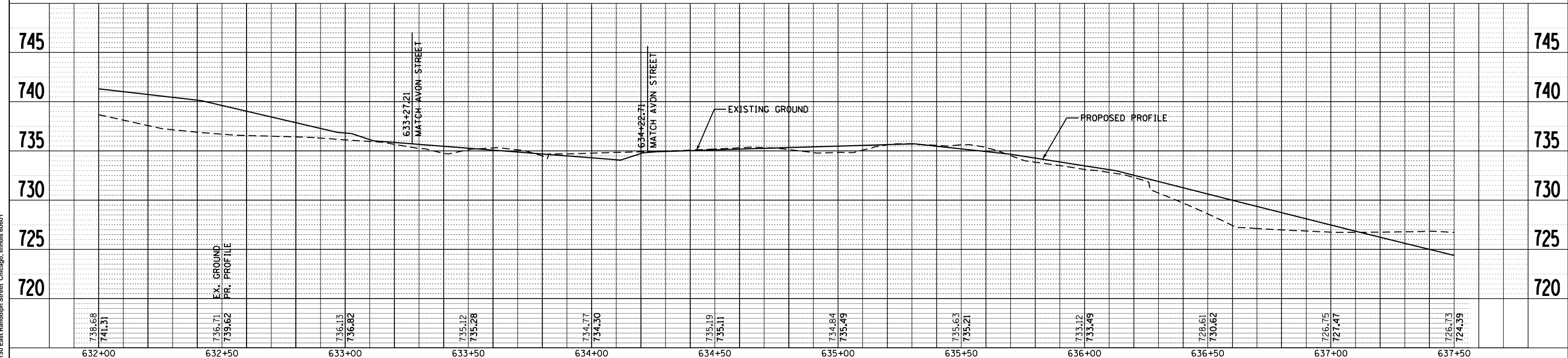
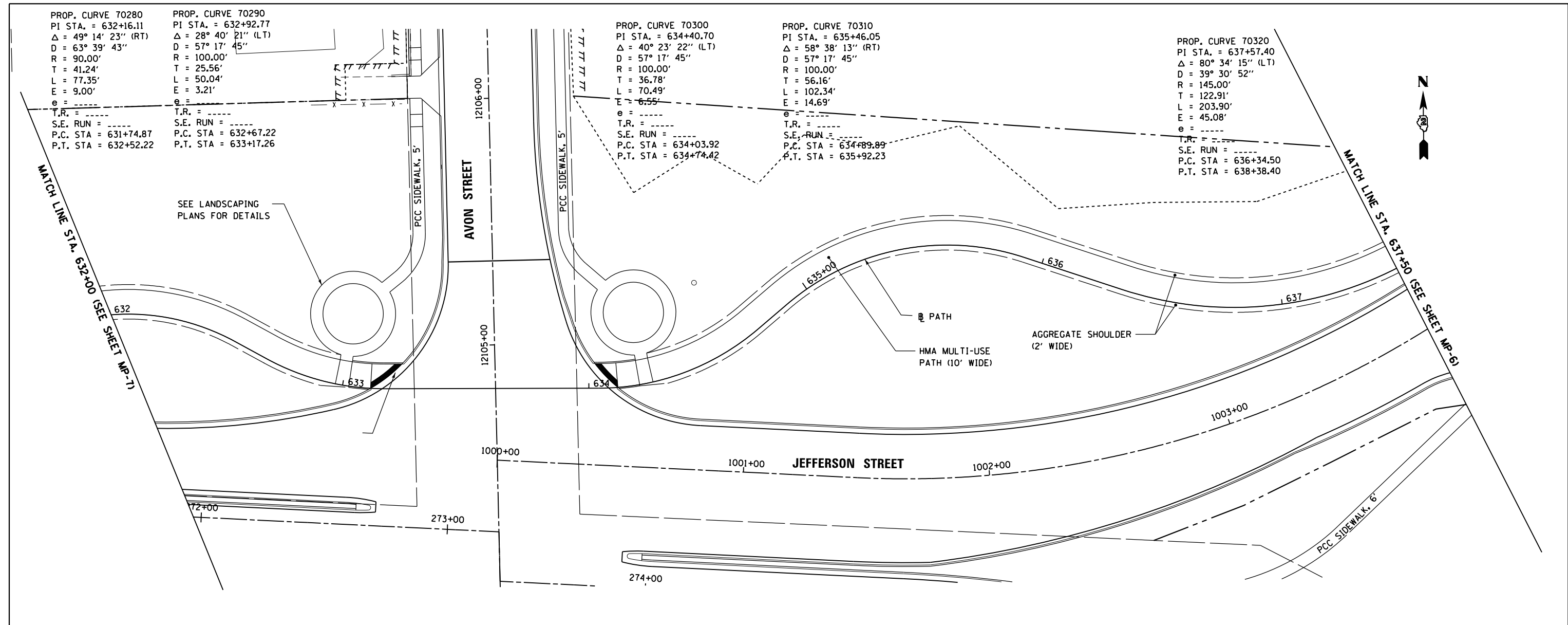
PROP. CURVE 70300
 PI STA. = 634+40.70
 $\Delta = 40^\circ 23' 22''$ (LT)
 $D = 57^\circ 17' 45''$
 $R = 100.00'$
 $T = 36.78'$
 $L = 70.49'$
 $E = 6.55'$
 $e = \dots$
 $T.R. = \dots$
 S.E. RUN = \dots
 P.C. STA = 634+03.92
 P.T. STA = 634+74.42

PROP. CURVE 70310
 PI STA. = 635+46.05
 $\Delta = 58^\circ 38' 13''$ (RT)
 $D = 57^\circ 17' 45''$
 $R = 100.00'$
 $T = 56.16'$
 $L = 102.34'$
 $E = 14.69'$
 $e = \dots$
 $T.R. = \dots$
 S.E. RUN = \dots
 P.C. STA = 634+89.89
 P.T. STA = 635+92.23

PROP. CURVE 70320
 PI STA. = 637+57.40
 $\Delta = 80^\circ 34' 15''$ (LT)
 $D = 39^\circ 30' 52''$
 $R = 145.00'$
 $T = 122.91'$
 $L = 203.90'$
 $E = 45.08'$
 $e = \dots$
 $T.R. = \dots$
 S.E. RUN = \dots
 P.C. STA = 636+34.50
 P.T. STA = 638+38.40

PLAN	SURVEYED	DATE
	PLOTTED	
	NOTE BOOK	
	NO.	
	CHECKED	
	FILE NAME	

PROFILE	SURVEYED	DATE
	PLOTTED	
	GRADES CHECKED	
	STRUCTURE NOTATIONS CHECKED	
	NO.	



McDonough Associates Inc.
 Engineers / Architects
 130 East Randolph Street Chicago, Illinois 60601

FILE NAME = c:\pwork\pwork\dossdd\0317616\0264750\sh-path109.dgn	USER NAME = dossdd	DESIGNED - EJD	REVISED -	STATE OF ILLINOIS DEPARTMENT OF TRANSPORTATION	MULTI USE PATH WEST STATE ST (US BUS 20)		F.A.P. RTE. = 303	SECTION = 41R	COUNTY = WINNEBAGO	TOTAL SHEETS = 327	SHEET NO. = 109	
PLOT SCALE = 40.0000' / in.	CHECKED - RCH	REVISIED -	REVISIED -		SCALE:	SHEET NO. 7 OF 9 SHEETS	STA. TO STA.	CONTRACT NO. 64750				
PLOT DATE = Mon Dec 17 14:11:06 2012	DATE - \$SUBDATE\$	REVISIED -	REVISIED -		FED. ROAD DIST. NO. 2 ILLINOIS FED. AID PROJECT							
					MP-7							