


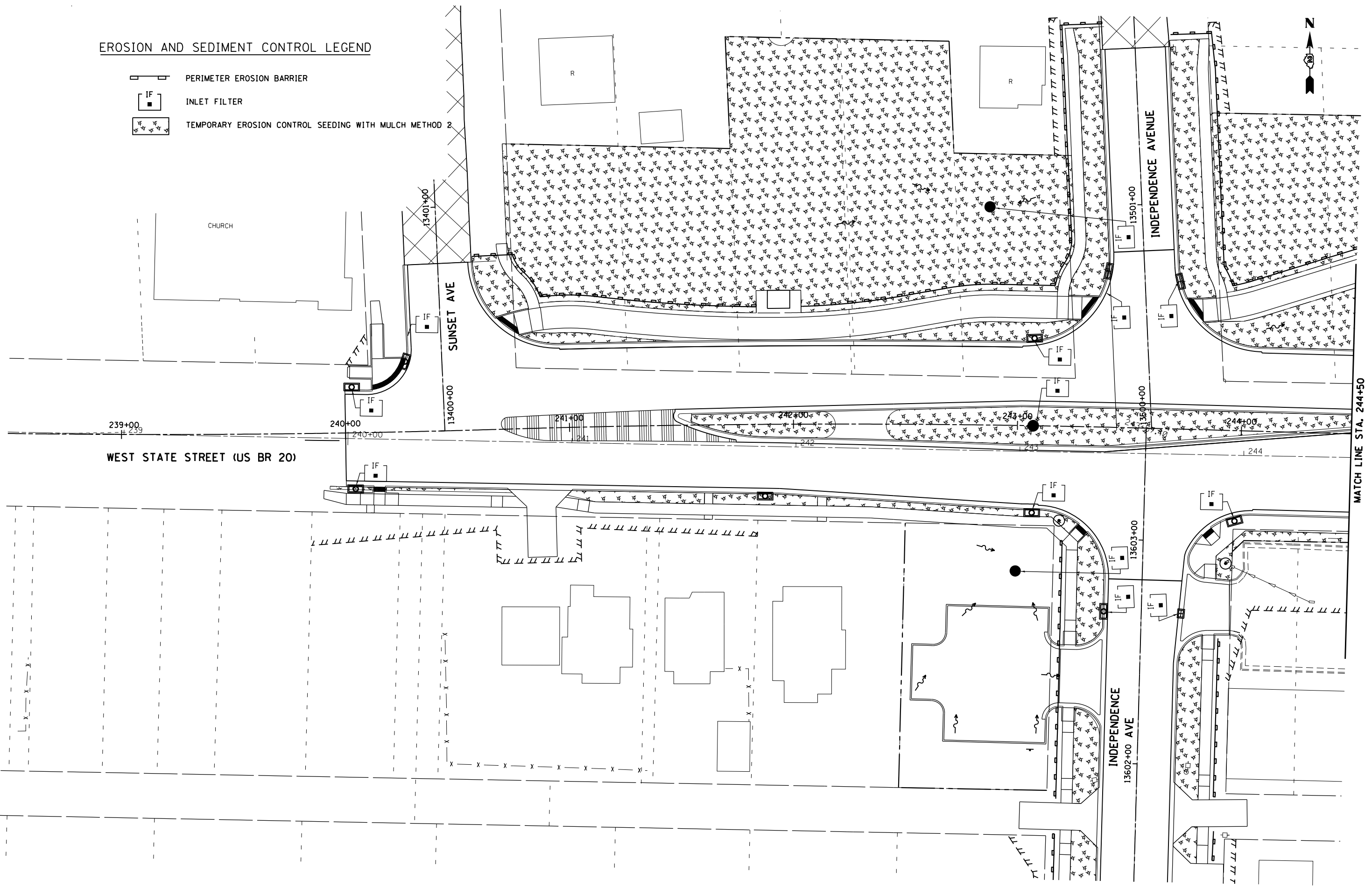


EROSION AND SEDIMENT CONTROL LEGEND

-  PERIMETER EROSION BARRIER
-  INLET FILTER
-  TEMPORARY EROSION CONTROL SEEDING WITH MULCH METHOD 2



McDonough Associates Inc.
 Engineers / Architects
 130 East Randolph Street Chicago, Illinois 60601

FILE NAME =	USER NAME = dosddd	DESIGNED - EJD	REVISED -
ei:\pw\work\p\dot\dosddd\0317618\026478	0-sht-er-121.dgn	DRAWN - EJD	REVISED -
	PLOT SCALE = 48.0000' / in.	CHECKED - RCH	REVISED -
	PLOT DATE = Mon Dec 17 14:17:37 2012	DATE - \$SUBDATE\$	REVISED -

STATE OF ILLINOIS
DEPARTMENT OF TRANSPORTATION

TEMPORARY EROSION AND SEDIMENT CONTROL PLAN
WEST STATE ST (US BUS 20)
 SCALE: SHEET NO. 1 OF 24 SHEETS STA. TO STA.

F.A.P. RTE.	SECTION	COUNTY	TOTAL SHEETS	SHEET NO.
303	41R	WINNEBAGO	327	121
FED. ROAD DIST. NO. 2 ILLINOIS FED. AID PROJECT			CONTRACT NO. 64750	

MATCH LINE STA. 244+50