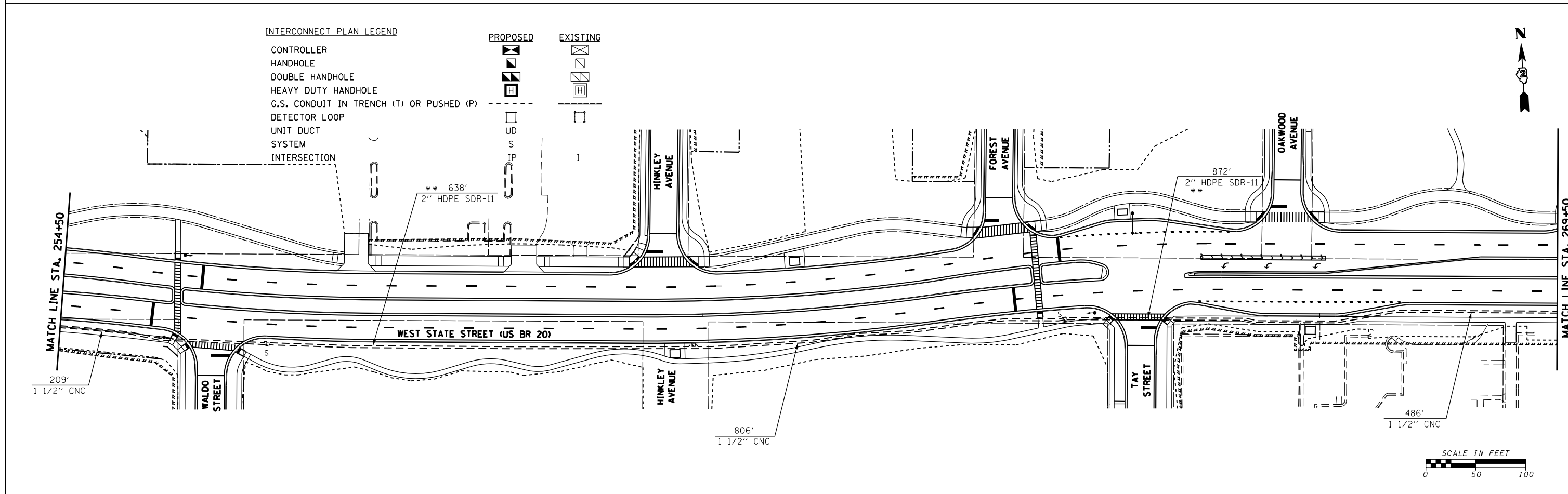


* 1 1/2" DIAMETER CONDUIT INCLUDES THE TRACER CABLE AND THE FIBER OPTIC CABLE FOR FUTURE CONNECTION.

** 2" DIAMETER HDPE SDR-11 CONDUIT INSTALLED IN SAME TRENCH AS INTERCONNECT CONDUIT. THIS CONDUIT IS CONTINUOUS AND INDEPENDENT OF ANY OTHER SYSTEM, AND IS FOR THE CITY OF ROCKFORD'S USE.

NOTE:
ALL HANDHOLES SHOWN ON THESE PLANS ARE (SPECIAL) AND SHALL BE QUAXITE 24" x 36" BOX PD STYLE ASSEMBLY WITH A DEPTH 48" AS MANUFACTURED BY HUBBELL LENOIR CITY, INC OR APPROVED EQUAL. SHOP DRAWINGS SHALL BE REVIEWED AND APPROVED BY THE CITY OF ROCKFORD PRIOR TO INSTALLATION.



FILE NAME =	USER NAME = dssdd	DESIGNED -	REVISED -	STATE OF ILLINOIS DEPARTMENT OF TRANSPORTATION	WEST STATE ST (US BUS 20) SHEET 1 OF 2 INTERCONNECT PLAN			F.A.P. RTE.	SECTION	COUNTY	TOTAL SHEETS	SHEET NO.
et:\pw\work\p\dot\dssdd\0317620\0264750-sh1-166-176.dgn		DRAWN -	REVISED -		303	41R	WINNEBAGO	327	175			
		CHECKED -	REVISED -		CONTRACT NO. 64750							
		DATE = \$SUBDATE\$	REVISED -		FED. ROAD DIST. NO. 2 ILLINOIS FED. AID PROJECT							
PLOT SCALE = 100.0000' / 1in.				SCALE:	SHEET NO.	OF SHEETS	STA.	TO STA.				
PLOT DATE = Mon Dec 17 15:03:14 2012												