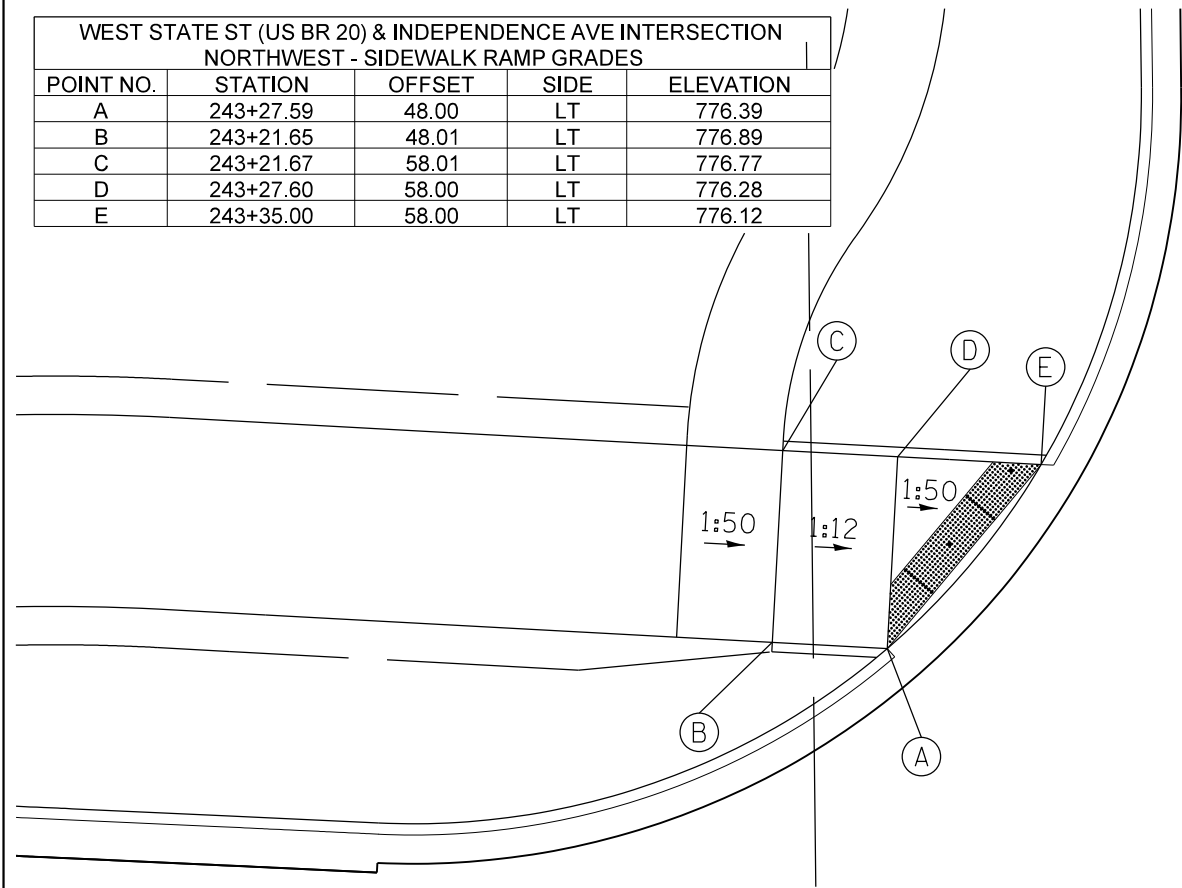


WEST STATE ST (US BR 20) & INDEPENDENCE AVE INTERSECTION NORTHWEST - SIDEWALK RAMP GRADES				
POINT NO.	STATION	OFFSET	SIDE	ELEVATION
A	243+27.59	48.00	LT	776.39
B	243+21.65	48.01	LT	776.89
C	243+21.67	58.01	LT	776.77
D	243+27.60	58.00	LT	776.28
E	243+35.00	58.00	LT	776.12

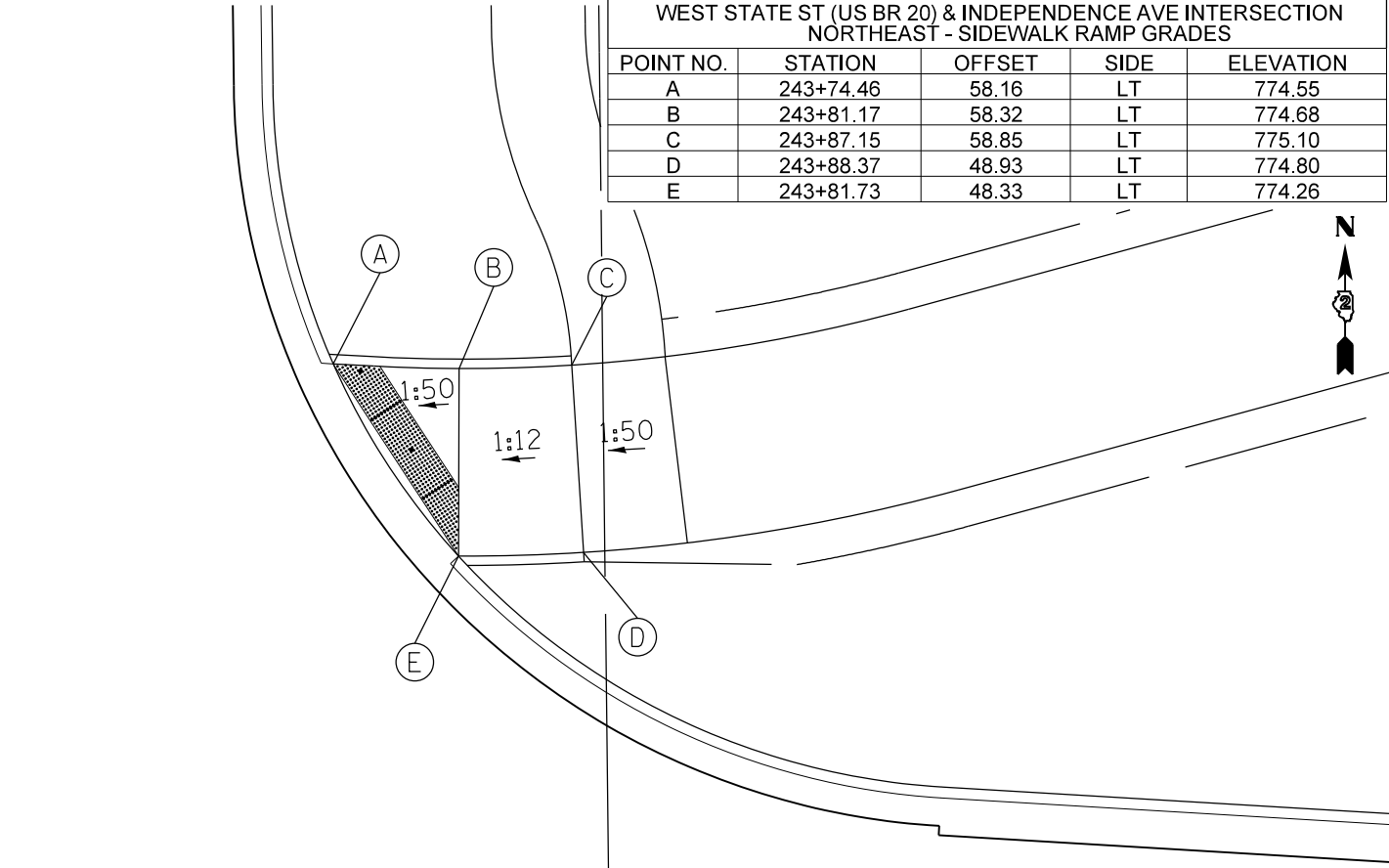


WEST STATE ST (US BR 20)

WEST STATE ST (US BR 20)

INDEPENDENCE AVE  
INDEPENDENCE AVE

WEST STATE ST (US BR 20) & INDEPENDENCE AVE INTERSECTION NORTHEAST - SIDEWALK RAMP GRADES				
POINT NO.	STATION	OFFSET	SIDE	ELEVATION
A	243+74.46	58.16	LT	774.55
B	243+81.17	58.32	LT	774.68
C	243+87.15	58.85	LT	775.10
D	243+88.37	48.93	LT	774.80
E	243+81.73	48.33	LT	774.26

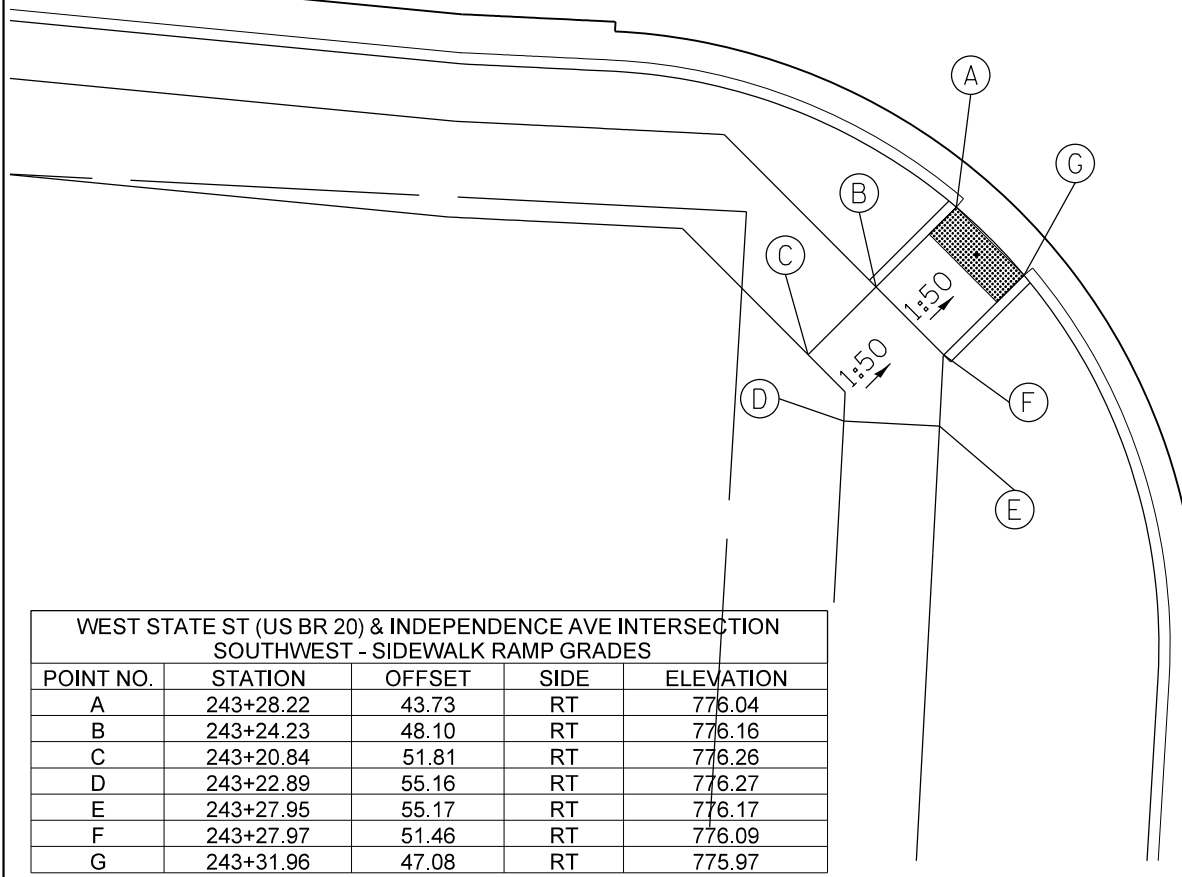


WEST STATE ST (US BR 20)

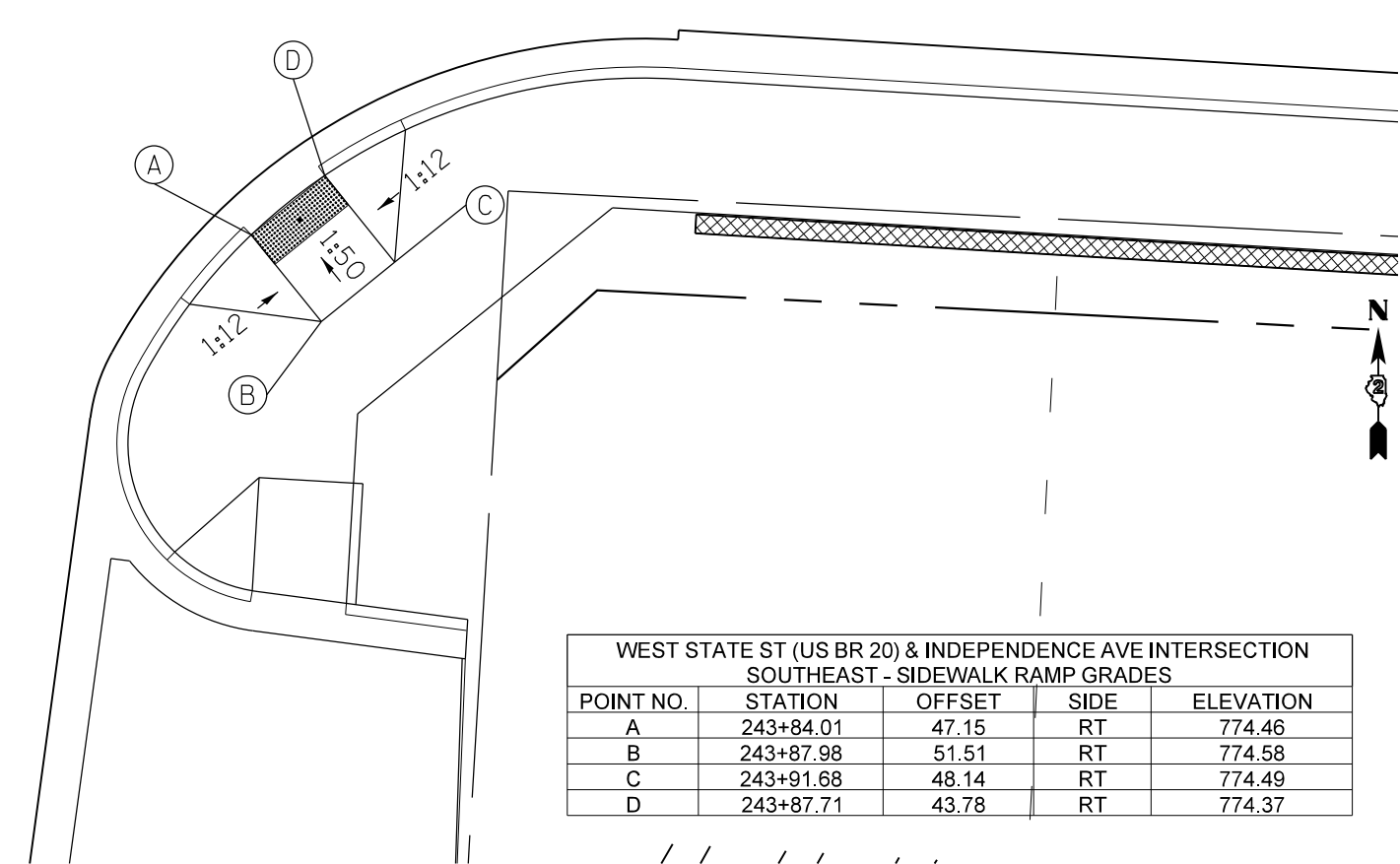
WEST STATE ST (US BR 20)

INDEPENDENCE AVE  
13603+00  
INDEPENDENCE AVE

WEST STATE ST (US BR 20) & INDEPENDENCE AVE INTERSECTION SOUTHWEST - SIDEWALK RAMP GRADES				
POINT NO.	STATION	OFFSET	SIDE	ELEVATION
A	243+28.22	43.73	RT	776.04
B	243+24.23	48.10	RT	776.16
C	243+20.84	51.81	RT	776.26
D	243+22.89	55.16	RT	776.27
E	243+27.95	55.17	RT	776.17
F	243+27.97	51.46	RT	776.09
G	243+31.96	47.08	RT	775.97



WEST STATE ST (US BR 20) & INDEPENDENCE AVE INTERSECTION SOUTHEAST - SIDEWALK RAMP GRADES				
POINT NO.	STATION	OFFSET	SIDE	ELEVATION
A	243+84.01	47.15	RT	774.46
B	243+87.98	51.51	RT	774.58
C	243+91.68	48.14	RT	774.49
D	243+87.71	43.78	RT	774.37



FILE NAME =	USER NAME = dossed	DESIGNED -	REVISED -
et:\pw\work\p\dot\dossed\d0326838\01sabled_Ramps.dgn		DRAWN -	REVISED -
Default	PLOT SCALE = 10.0000' / in.	CHECKED -	REVISED -
	PLOT DATE = Mon Dec 17 15:42:02 2012	DATE -	REVISED -

STATE OF ILLINOIS  
DEPARTMENT OF TRANSPORTATION

WEST STATE ST (US BR 20) AND INDEPENDENCE AVE  
SIDEWALK RAMP DETAIL

F.A.P. RTE.	SECTION	COUNTY	TOTAL SHEETS	SHEET NO.
303	41R	WINNEAGO	327	187
CONTRACT NO. 64750				
ILLINOIS FED. AID PROJECT				

SCALE: SHEET OF SHEETS STA. TO STA.