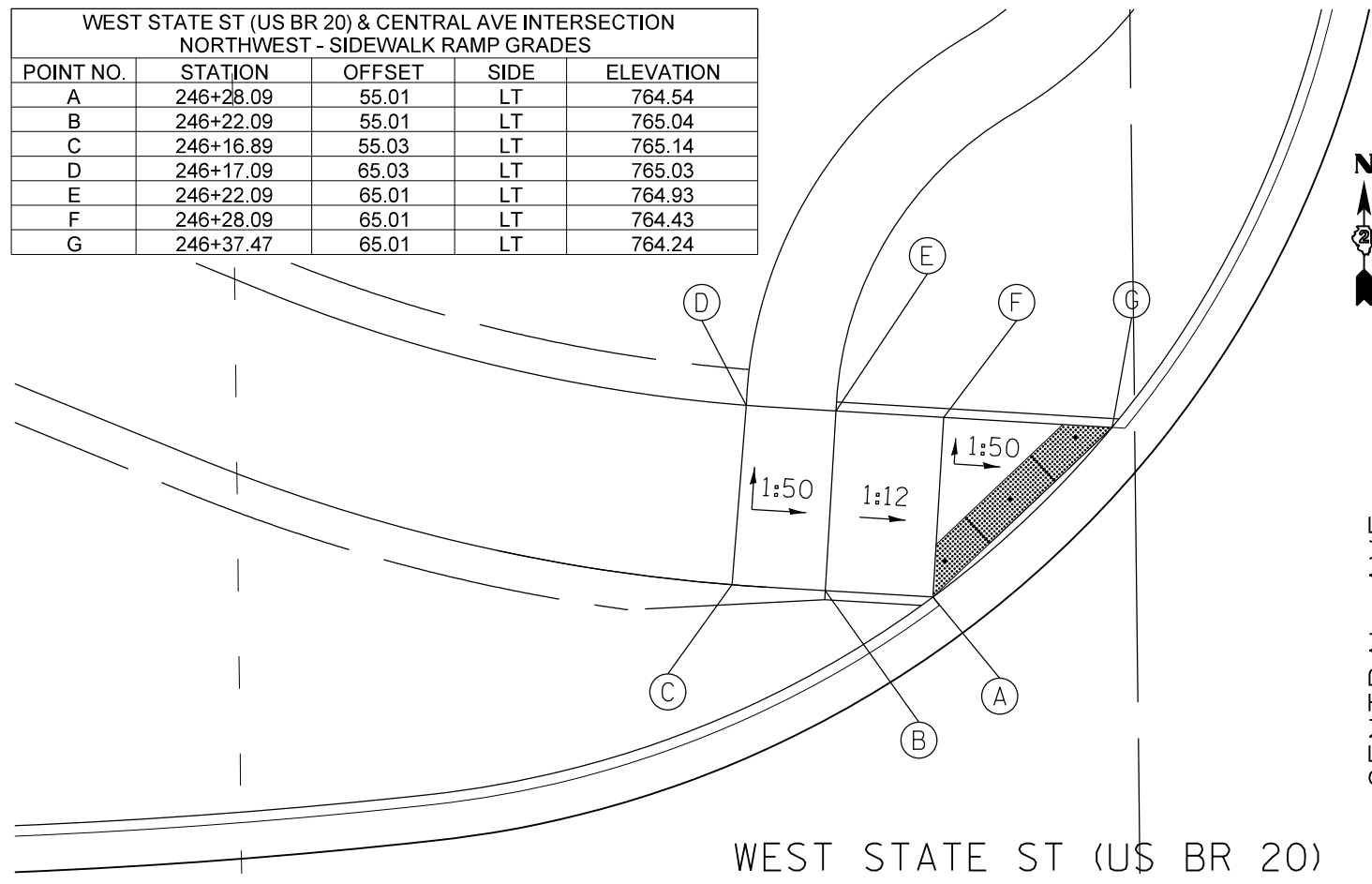
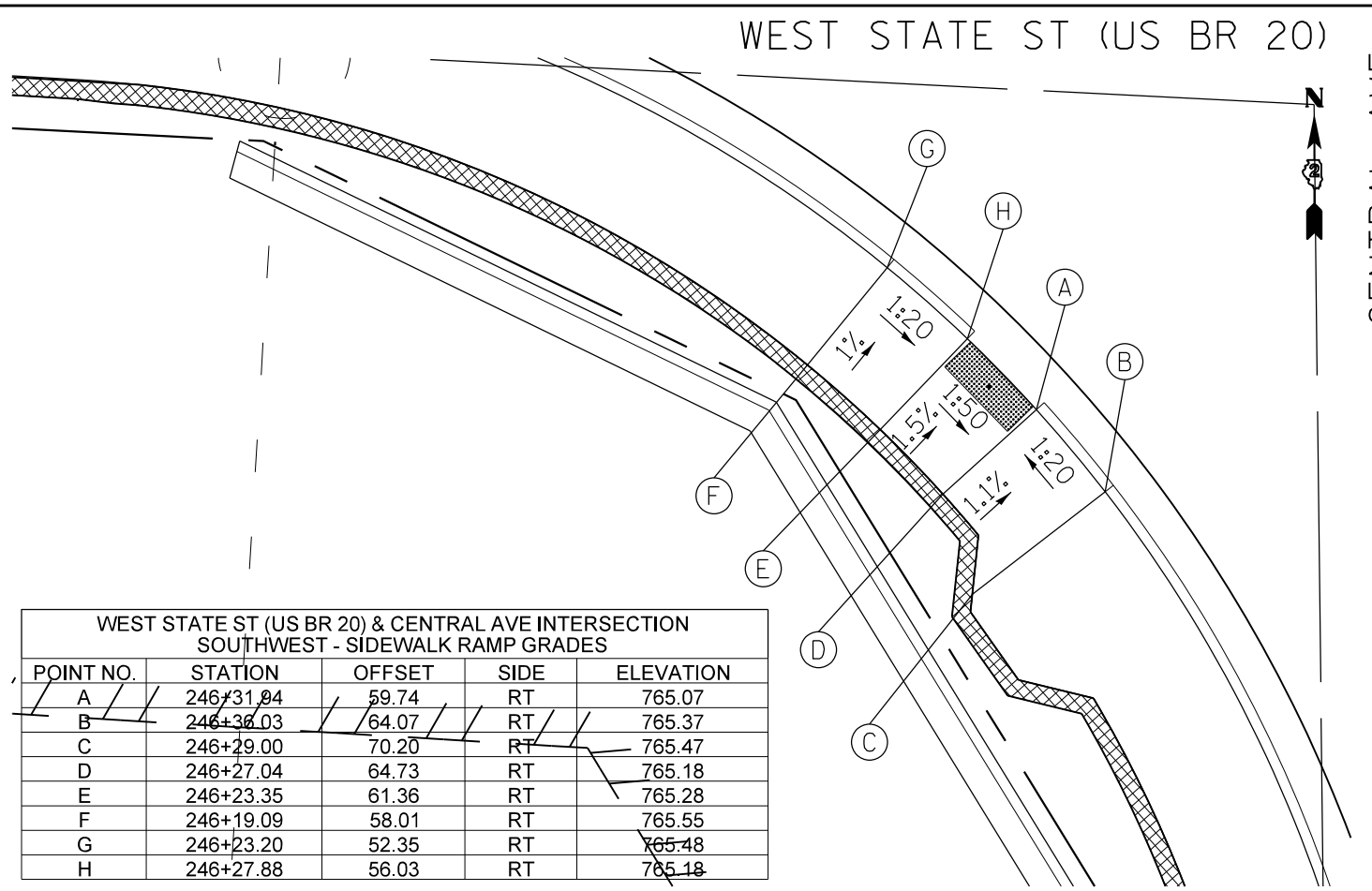
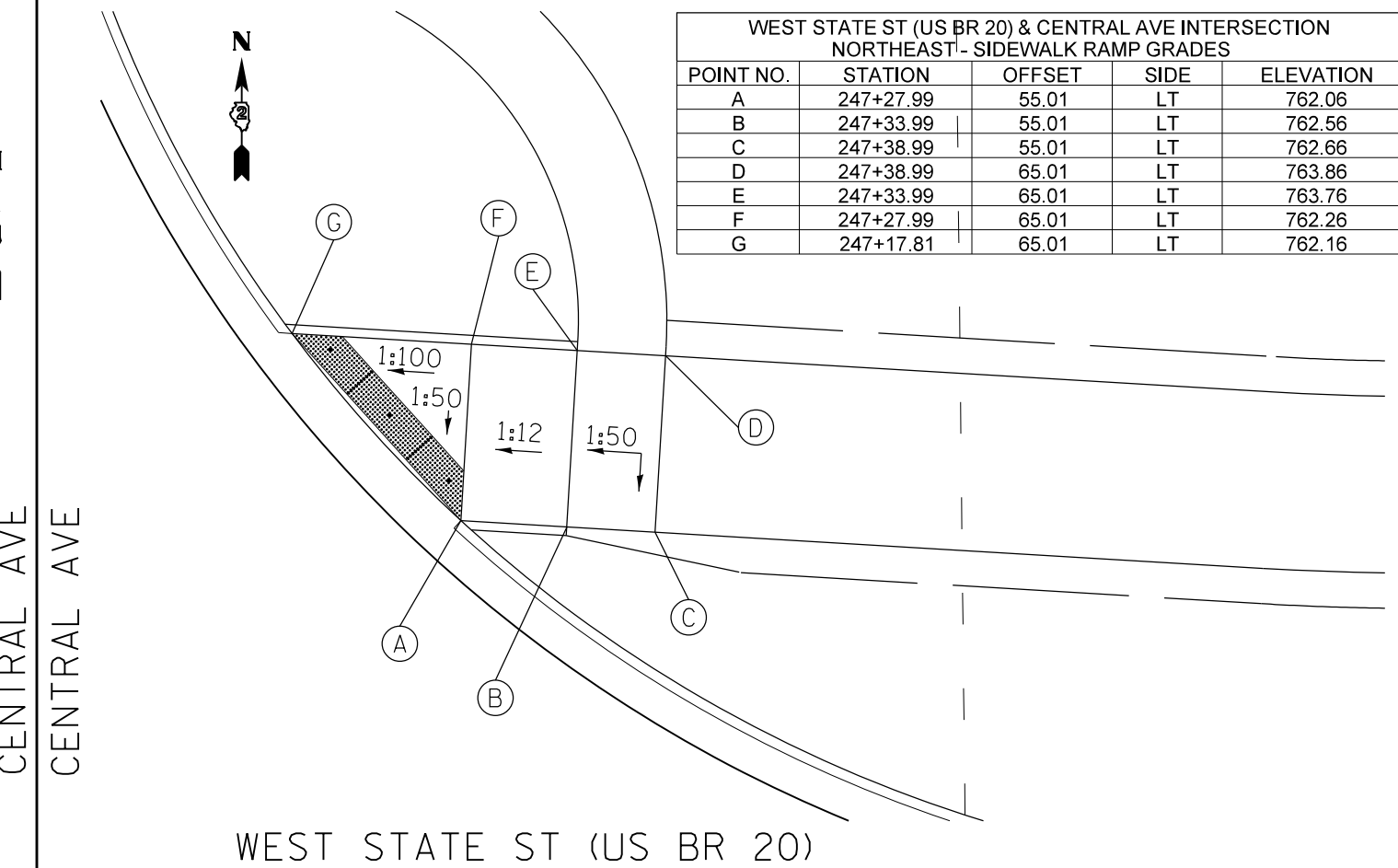


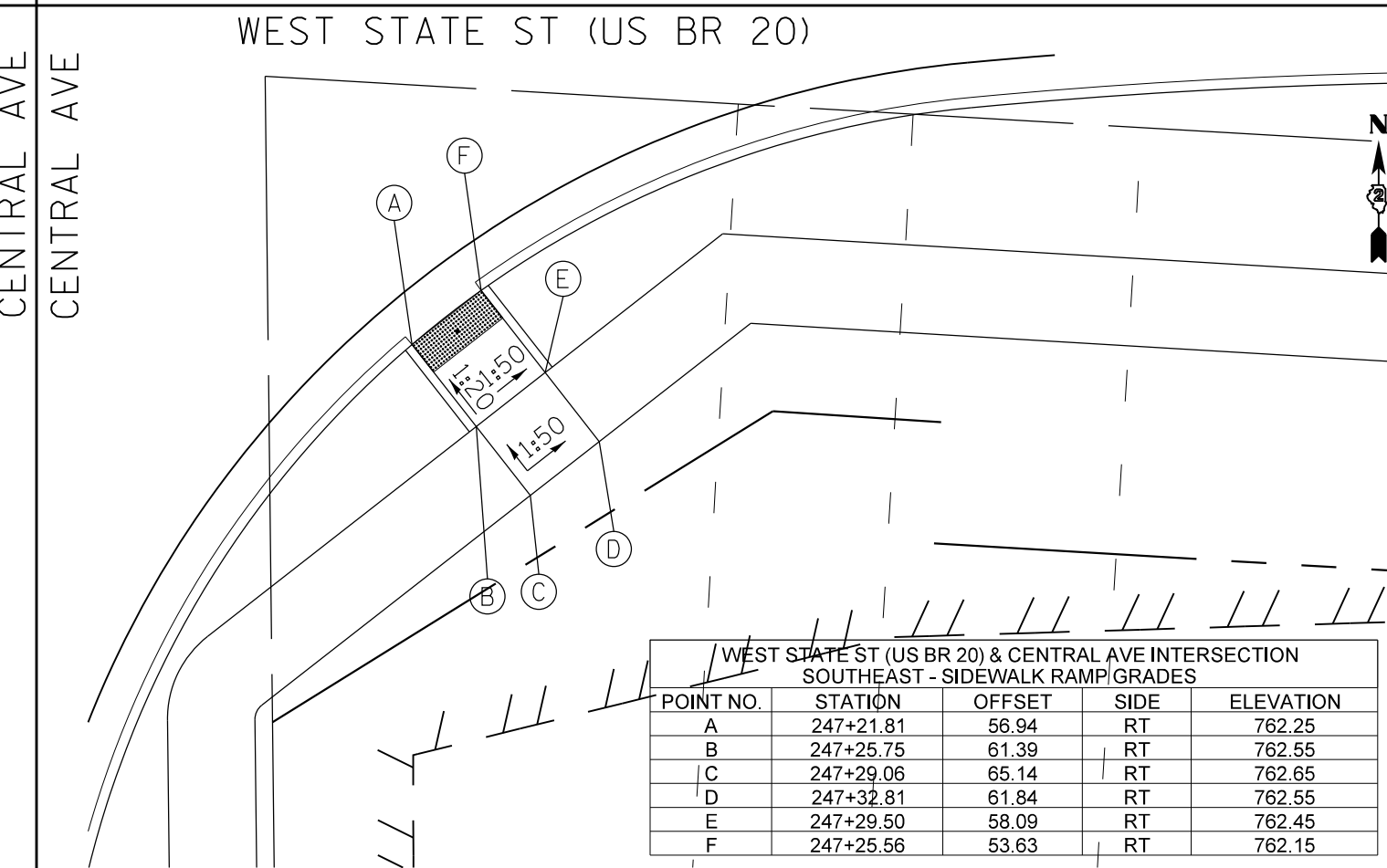
WEST STATE ST (US BR 20) & CENTRAL AVE INTERSECTION NORTHWEST - SIDEWALK RAMP GRADES				
POINT NO.	STATION	OFFSET	SIDE	ELEVATION
A	246+28.09	55.01	LT	764.54
B	246+22.09	55.01	LT	765.04
C	246+16.89	55.03	LT	765.14
D	246+17.09	65.03	LT	765.03
E	246+22.09	65.01	LT	764.93
F	246+28.09	65.01	LT	764.43
G	246+37.47	65.01	LT	764.24



WEST STATE ST (US BR 20) & CENTRAL AVE INTERSECTION NORTHEAST - SIDEWALK RAMP GRADES				
POINT NO.	STATION	OFFSET	SIDE	ELEVATION
A	247+27.99	55.01	LT	762.06
B	247+33.99	55.01	LT	762.56
C	247+38.99	55.01	LT	762.66
D	247+38.99	65.01	LT	763.86
E	247+33.99	65.01	LT	763.76
F	247+27.99	65.01	LT	762.26
G	247+17.81	65.01	LT	762.16



WEST STATE ST (US BR 20) & CENTRAL AVE INTERSECTION SOUTHWEST - SIDEWALK RAMP GRADES				
POINT NO.	STATION	OFFSET	SIDE	ELEVATION
A	246+31.84	59.74	RT	765.07
B	246+36.03	64.07	RT	765.37
C	246+29.00	70.20	RT	765.47
D	246+27.04	64.73	RT	765.18
E	246+23.35	61.36	RT	765.28
F	246+19.09	58.01	RT	765.55
G	246+23.20	52.35	RT	765.48
H	246+27.88	56.03	RT	765.18



WEST STATE ST (US BR 20) & CENTRAL AVE INTERSECTION SOUTHEAST - SIDEWALK RAMP GRADES				
POINT NO.	STATION	OFFSET	SIDE	ELEVATION
A	247+21.81	56.94	RT	762.25
B	247+25.75	61.39	RT	762.55
C	247+29.06	65.14	RT	762.65
D	247+32.81	61.84	RT	762.55
E	247+29.50	58.09	RT	762.45
F	247+25.56	53.63	RT	762.15

FILE NAME =	USER NAME = dosddd	DESIGNED -	REVISED -
et:\pwork\pwork\dot\dosddd\d0326838\01sabled_Ramps.dgn		DRAWN -	REVISED -
Default	PLOT SCALE = 10.0000' / in.	CHECKED -	REVISED -
	PLOT DATE = Mon Dec 17 15:43:37 2012	DATE -	REVISED -

STATE OF ILLINOIS
DEPARTMENT OF TRANSPORTATION

WEST STATE ST (US BR 20) AND CENTRAL AVE
SIDEWALK RAMP DETAIL

SCALE: SHEET OF SHEETS STA. TO STA.

F.A.P. RTE.	SECTION	COUNTY	TOTAL SHEETS	SHEET NO.
303	41R	WINNEBAGO	327	188
CONTRACT NO. 64750				
ILLINOIS FED. AID PROJECT				