


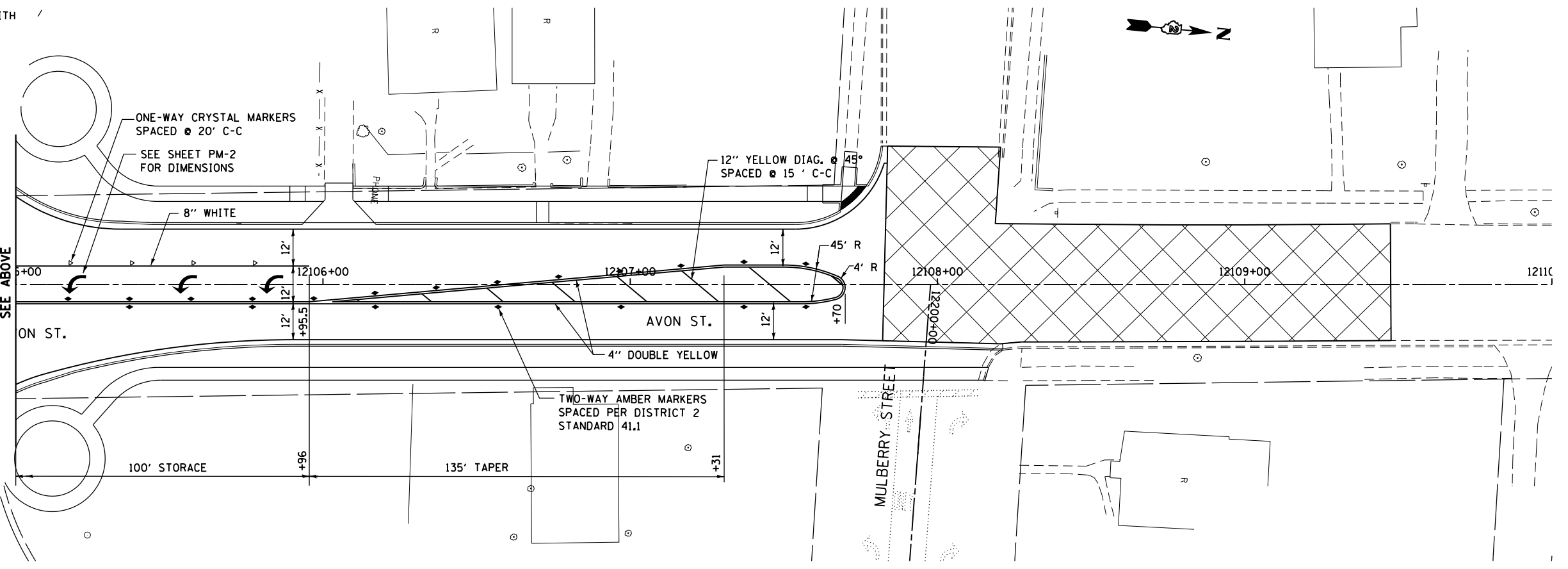
FOR US BR 20 SEE SHEET PM-4  
FOR AVON AVE. NORTH OF US BR 20  
SEE BELOW

**LEGEND**

\* - 6" WHITE CROSSWALK LINES, 6' WIDE C-C

 - MULTI-USE PATH  
 6" WHITE LINES, 10' WIDE C-C WITH  
 12" WHITE DIAGONALS AT 3' CTS

FOR US BR 20 SEE SHEET PM-4  
FOR AVON AVE. SOUTH OF US BR 20  
SEE ABOVE



|   |                                      |                    |           |
|---|--------------------------------------|--------------------|-----------|
| FILE NAME =   | USER NAME = dosddd                   | DESIGNED - JCL     | REVISED - |
| et:\pw\work\p\dot\dosddd\0317624\0264750-sh1-pm-206.dgn |                                      | DRAWN - JCL        | REVISED - |
|   | PLOT SCALE = 40.0000' / in.          | CHECKED - RCH      | REVISED - |
|   | PLOT DATE = Mon Dec 17 15:50:47 2012 | DATE - \$SUBDATE\$ | REVISED - |

**STATE OF ILLINOIS  
DEPARTMENT OF TRANSPORTATION**

**PAVEMENT MARKING PLAN  
AVON STREET**

SCALE: SHEET NO. 7 OF 9 SHEETS STA. TO STA.

| F.A.P. RTE.                                     | SECTION | COUNTY    | TOTAL SHEETS | SHEET NO. |
|---|---------|-----------|--------------|-----------|
| 303   | 41R     | WINNEBAGO | 327          | 206       |
| CONTRACT NO. 64750                              |         |           |              |           |
| FED. ROAD DIST. NO. 2 ILLINOIS FED. AID PROJECT |         |           |              |           |