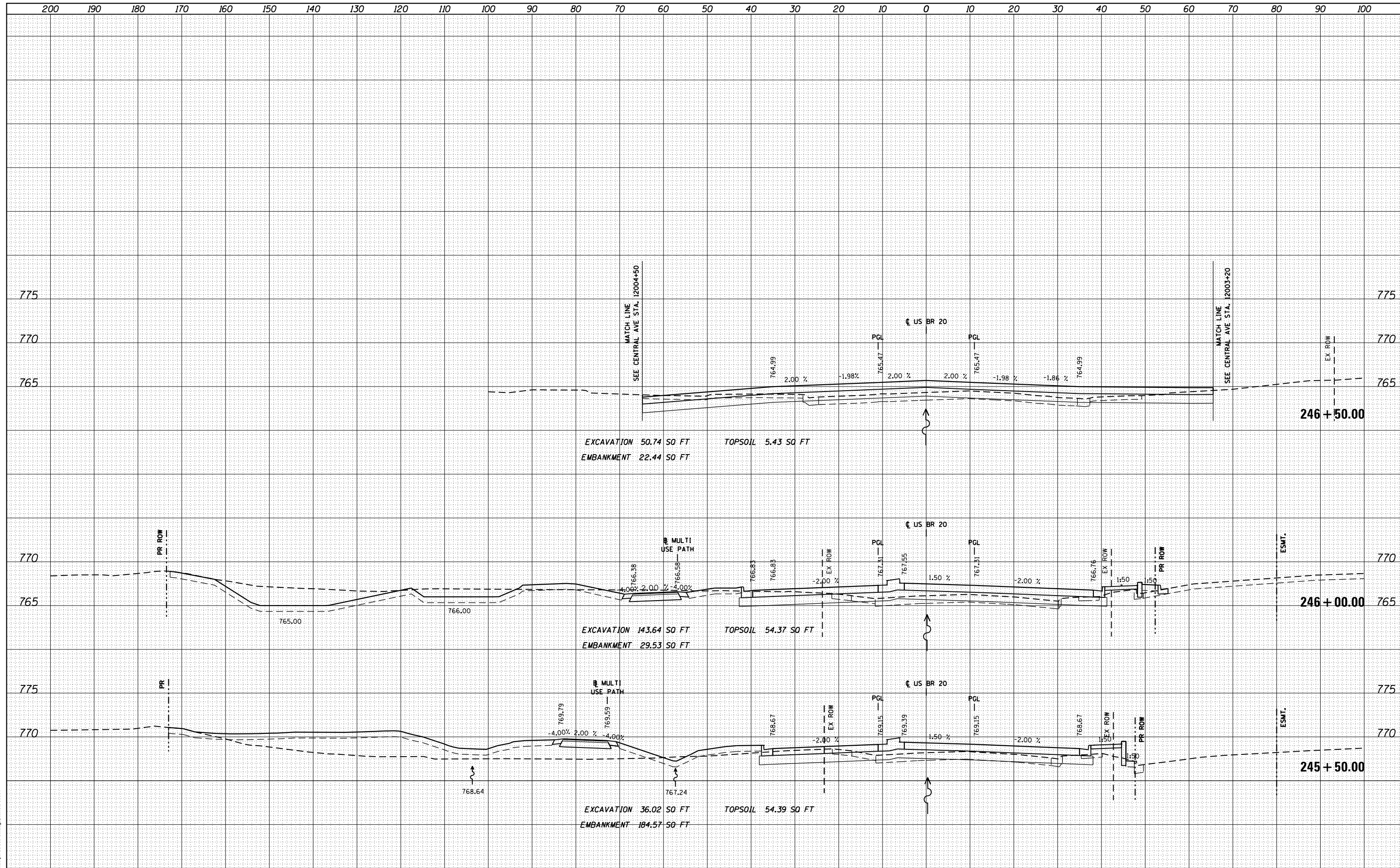


DATE	
BY	
FINISHED	
NO. OF SHEETS	
DATE	
BY	
FINISHED	
NO. OF SHEETS	
DATE	
BY	
FINISHED	
NO. OF SHEETS	

DATE	
BY	
FINISHED	
NO. OF SHEETS	
DATE	
BY	
FINISHED	
NO. OF SHEETS	
DATE	
BY	
FINISHED	
NO. OF SHEETS	

McDonough Associates Inc.
 Engineers / Architects
 130 East Randolph Street Chicago, Illinois 60601



FILE NAME =	USER NAME = dosddd	DESIGNED - JWM	REVISED -	STATE OF ILLINOIS DEPARTMENT OF TRANSPORTATION	STATE (US BUS 20) CROSS SECTIONS SCALE: 1"=10'H 1"=5'V SHEET NO. 5 OF SHEETS STA. 245+50.00 TO STA. 246+50.00	F.A.P. RTE.	SECTION	COUNTY	TOTAL SHEETS	SHEET NO.	
es:\pw_work\p\dot\dosddd\0317626\0264750-sh	ssht-(pg242-273).dgn	DRAWN - JWM	REVISED -			303	41R	WINNEBAGO	327	246	
PLOT SCALE = 20.0000' / in.	CHECKED - RCH	REVISIED -				CONTRACT NO. 64750		ILLINOIS FED. AID PROJECT			
PLOT DATE = Mon Dec 17 16:49:24 2012	DATE - \$SUBDATE\$	REVISIED -									