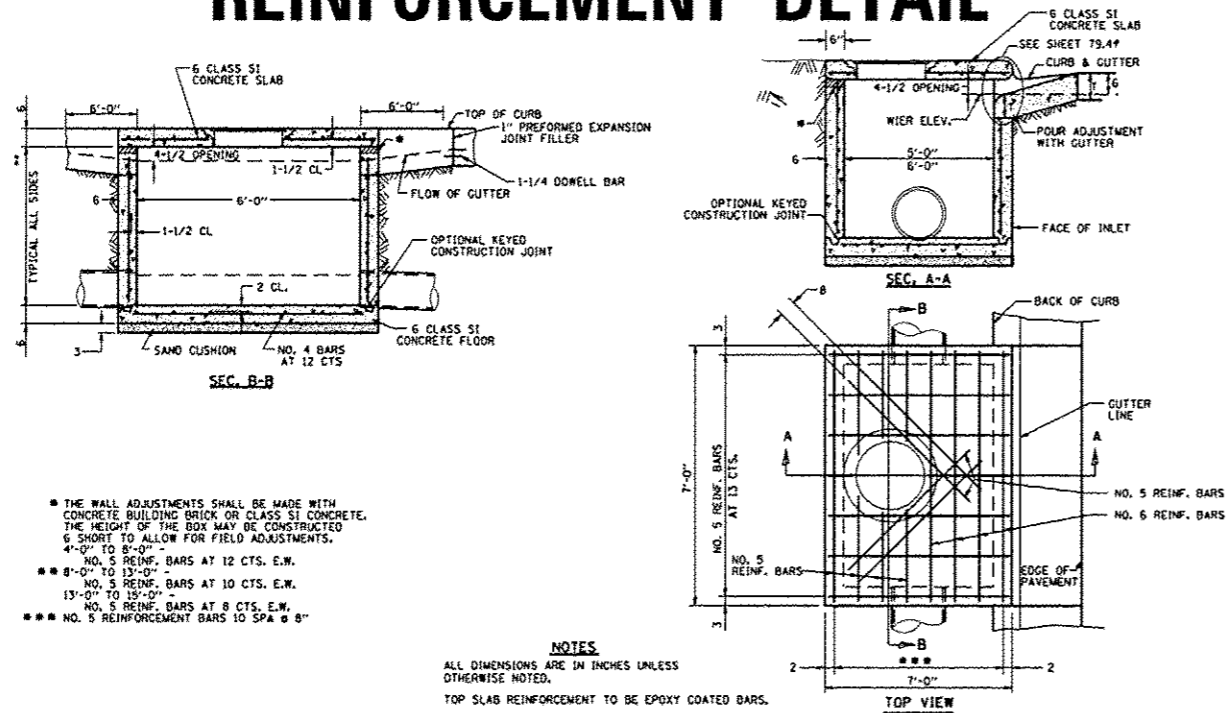


# INLET SPECIAL NO. 7 & 8 REINFORCEMENT DETAIL



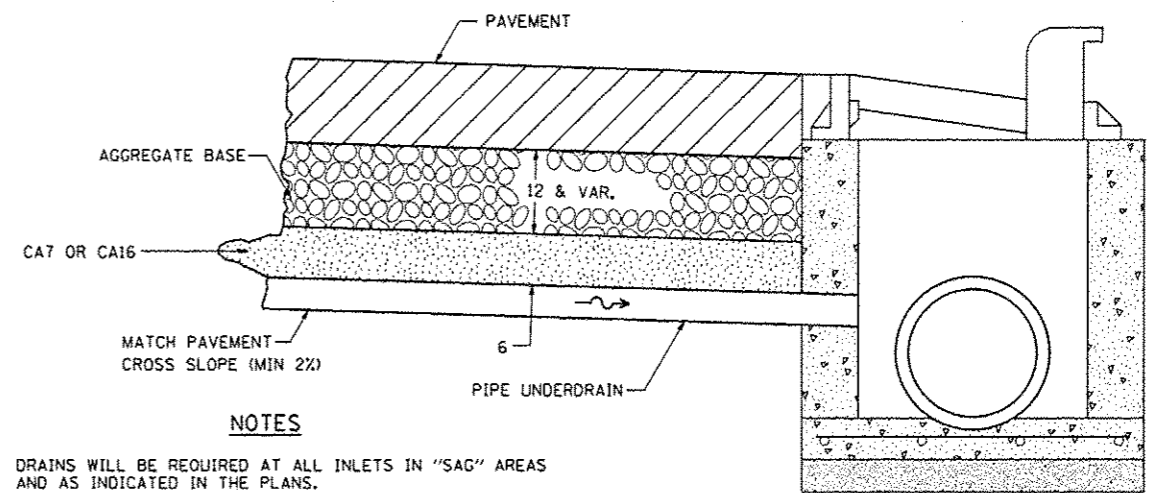
- THE WALL ADJUSTMENTS SHALL BE MADE WITH CONCRETE BUILDING BRICK OR CLASS S1 CONCRETE. THE HEIGHT OF THE BOX MAY BE CONSTRUCTED 6 SHORT TO ALLOW FOR FIELD ADJUSTMENTS.
- 4'-0" TO 8'-0" - NO. 5 REINF. BARS AT 12 CTS. E.W.
- 8'-0" TO 13'-0" - NO. 5 REINF. BARS AT 10 CTS. E.W.
- 13'-0" TO 18'-0" - NO. 5 REINF. BARS AT 8 CTS. E.W.
- NO. 5 REINFORCEMENT BARS TO SPA @ 8"

**NOTES**  
ALL DIMENSIONS ARE IN INCHES UNLESS OTHERWISE NOTED.  
TOP SLAB REINFORCEMENT TO BE EPOXY COATED BARS.

REVISED - 10-5-11

INLET SPECIAL NO. 7 & 8 REINFORCEMENT DETAIL 79.4h

# DRAIN FOR AGGREGATE BASES IN URBAN AREAS



**NOTES**

DRAINS WILL BE REQUIRED AT ALL INLETS IN "SAG" AREAS AND AS INDICATED IN THE PLANS.

THIS WORK SHALL BE COMPLETED ACCORDING TO SECTION 601 OF THE STANDARD SPECIFICATIONS.

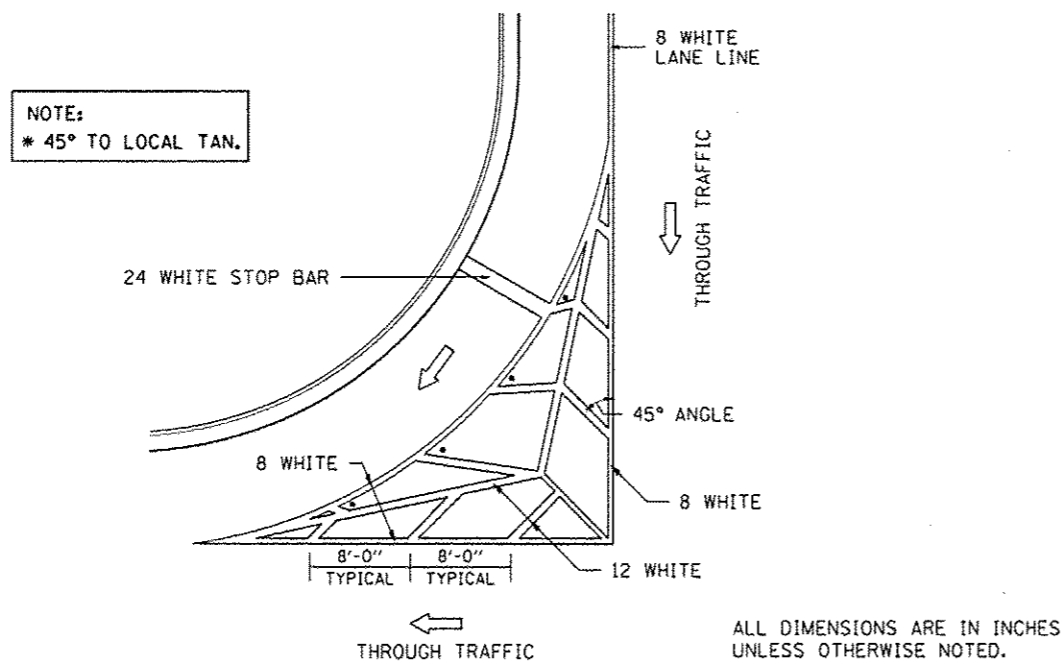
THIS WORK WILL BE PAID FOR AT THE CONTRACT UNIT PRICE PER FOOT FOR PIPE UNDERDRAINS OF THE DIAMETER SPECIFIED WHICH PRICE SHALL INCLUDE THE CA7 OR CA16 AND THE CONNECTION TO THE INLET.

ALL DIMENSIONS ARE IN INCHES UNLESS OTHERWISE NOTED.

REVISED - 10-5-11

DRAIN FOR AGGREGATE BASES IN URBAN AREAS 88.4

# TYPICAL MARKING FOR PAINTED ISLANDS



ALL DIMENSIONS ARE IN INCHES UNLESS OTHERWISE NOTED.

REVISED - 10-5-11

TYPICAL MARKING FOR PAINTED ISLANDS 93.4

REVISED -	REGION 2 / DISTRICT 2 STANDARD			
REVISED -	F.A.P. RTE.	SECTION	COUNTY	TOTAL SHEETS
REVISED -	303	41R	WINNEBAGO	327
REVISED -	CONTRACT NO. 64750			SHEET NO.
REVISED -	FED. ROAD DIST. NO. 2 ILLINOIS FED. AID PROJECT			327