

STATE OF ILLINOIS
DEPARTMENT OF TRANSPORTATION
DIVISION OF HIGHWAYS

**PROPOSED
HIGHWAY PLANS**

F.A.P. ROUTE 742 (IL 2)
SECTION (32, 33) R-1
PROJECT: F-0742(137)
RECONSTRUCTION
WINNEBAGO COUNTY

C-92-094-12

F.A.P. RTE.	SECTION	COUNTY	TOTAL SHEETS	SHEET NO.
742	(32, 33) R-1	WINNEBAGO	705	1
ILLINOIS			CONTRACT NO. 64821	

*705-1=704

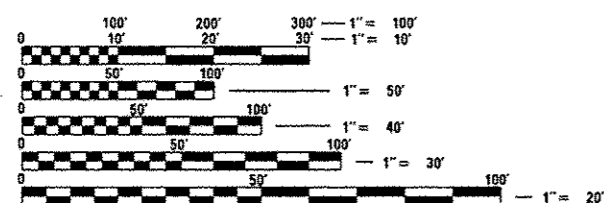
D-92-051-02



FOR INDEX OF SHEETS, SEE SHEET NO. 3
FOR STATE STANDARDS, SEE SHEET NO. 3

DESIGN DESIGNATION

2370 (20) - MAJOR PRINCIPAL ARTERIAL - 4.95 (PCC-20)



FULL SIZE PLANS HAVE BEEN PREPARED USING STANDARD ENGINEERING SCALES. REDUCED SIZED PLANS WILL NOT CONFORM TO STANDARD SCALES. IN MAKING MEASUREMENTS ON REDUCED PLANS, THE ABOVE SCALES MAY BE USED.

J.U.L.I.E.
JOINT UTILITY LOCATION INFORMATION FOR EXCAVATION
1-800-892-0123
OR 811

PROJECT ENGINEER - MASOOD AHMAD
SQUAD LEADER - TRACI HELFRICH (815-284-5932)
EMAIL: TRACI.HELFRICH@ILLINOIS.GOV
PROJECT MANAGER - GREGORY R. BRUMM
DLZ ILLINOIS, INC.
847-640-0840

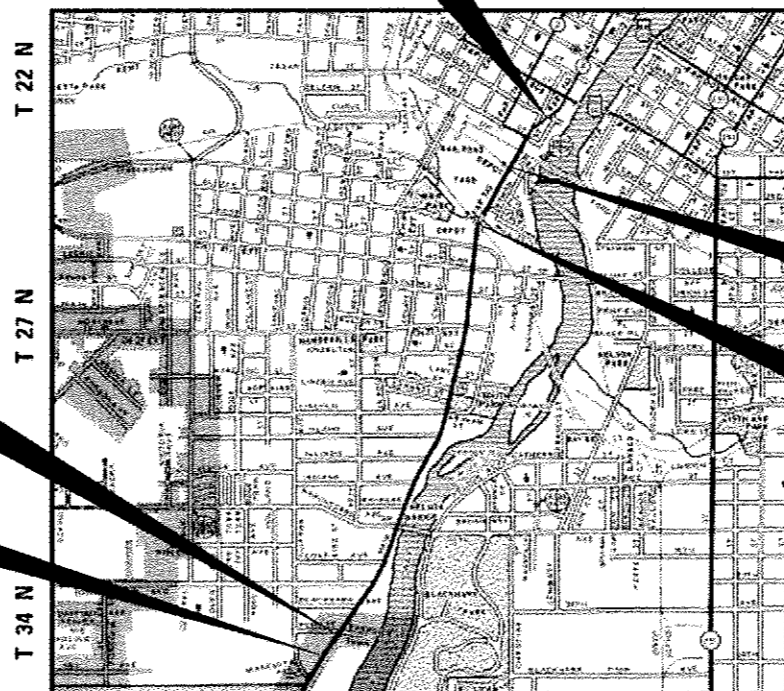
CONTRACT NO. 64821

TOWNSHIP : ROCKFORD
SECTION : 22, 27 & 34

PROJECT BEGINS
STA. 349 + 89.32

IMPROVEMENT BEGINS
STA. 345 + 64.66

IMPROVEMENT/PROJECT ENDS
STA. 436 + 12.69



ROCKFORD TWP. MAP SCALE 4800'

GROSS LENGTH = 9,048.03 FT. = 1.714 MILE
NET LENGTH = 9,015.59 FT. = 1.707 MILE



RR OMMISION
STA 429 + 33.01 TO
STA 429 + 54.56

RR OMMISION
STA 417 + 87.86 TO
STA 417 + 98.75

STATE OF ILLINOIS
DEPARTMENT OF TRANSPORTATION
DIVISION OF HIGHWAYS

SUBMITTED Dec. 14 2012
Paul [Signature]
DEPUTY DIRECTOR OF HIGHWAYS, REGION ENGINEER

Feb 1 2013
John D. Baranzelli, P.E. [Signature]
acting ENGINEER OF DESIGN AND ENVIRONMENT

Feb 1 2013
Omer Osman, P.E. [Signature]
DIRECTOR OF HIGHWAYS, CHIEF ENGINEER

**PRINTED BY THE AUTHORITY
OF THE STATE OF ILLINOIS**