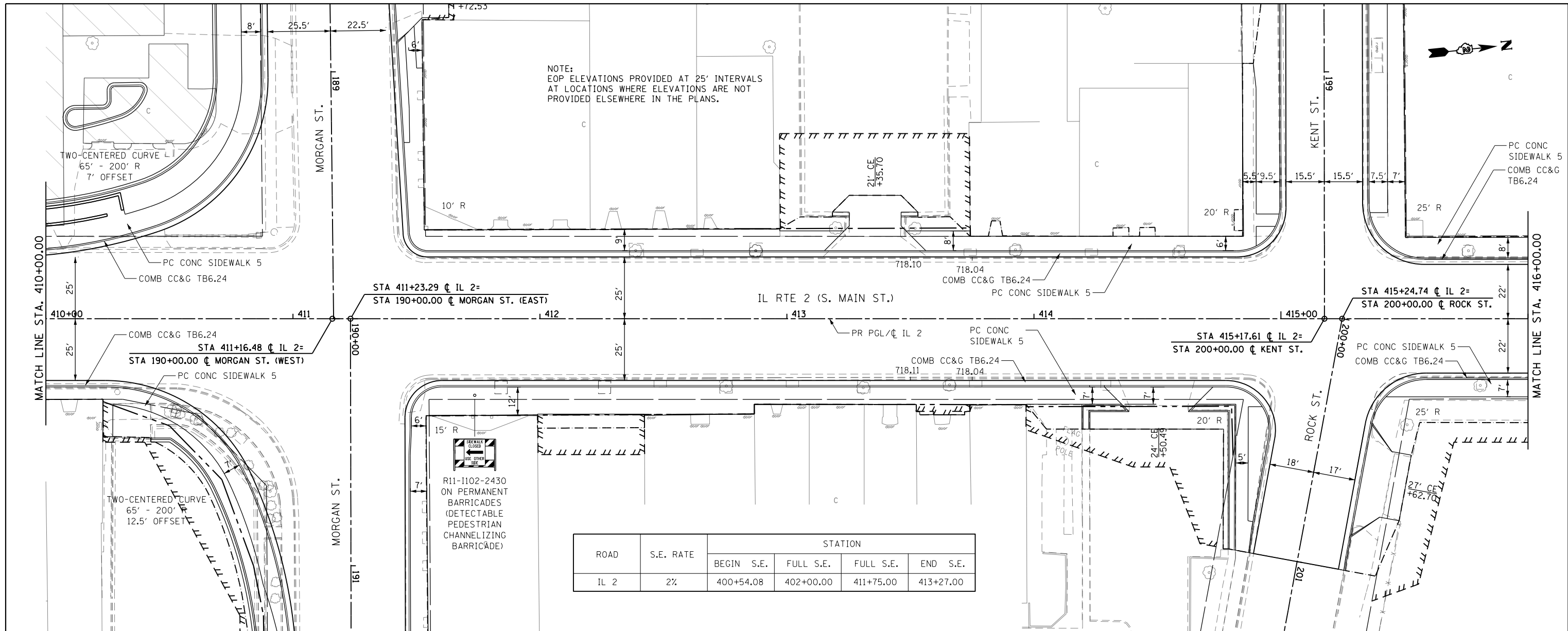


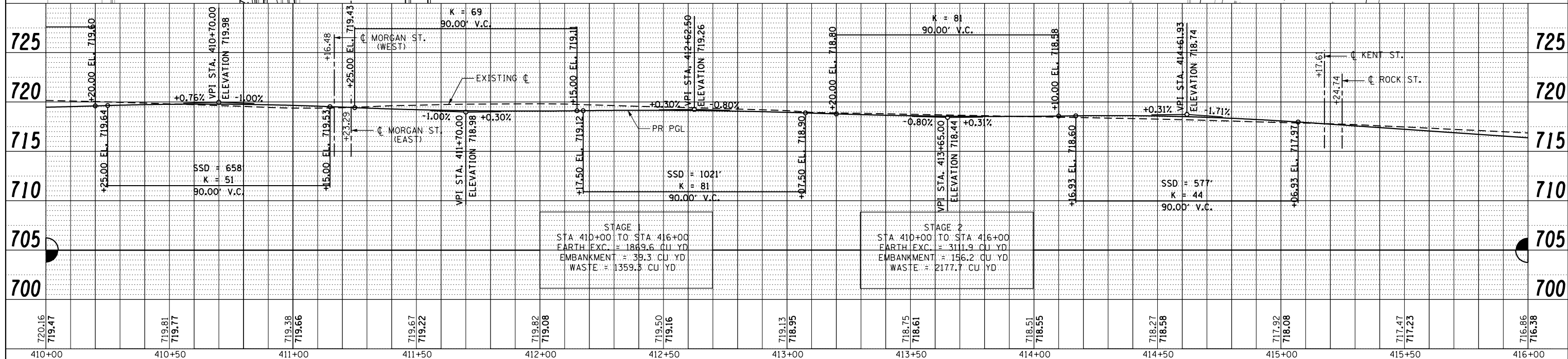
PLAN	SURVEYED	DATE
	PLOTTED	
	ALIGNED	
	CHECKED	
	DESIGNED	
	BY	
	NO.	

PROFILE	SURVEYED	DATE
	PLOTTED	
	GRADES	
	CHECKED	
	STRUCTURE	
	NOTATIONS	
	BY	
	NO.	



NOTE:
EOP ELEVATIONS PROVIDED AT 25' INTERVALS
AT LOCATIONS WHERE ELEVATIONS ARE NOT
PROVIDED ELSEWHERE IN THE PLANS.

ROAD	S.E. RATE	STATION			
		BEGIN S.E.	FULL S.E.	FULL S.E.	END S.E.
IL 2	2%	400+54.08	402+00.00	411+75.00	413+27.00



STAGE
STA 410+00 TO STA 416+00
EARTH EXC. = 1869.6 CU YD
EMBANKMENT = 39.3 CU YD
WASTE = 1359.3 CU YD

STAGE 2
STA 410+00 TO STA 416+00
EARTH EXC. = 3111.9 CU YD
EMBANKMENT = 156.2 CU YD
WASTE = 2177.7 CU YD

FILE NAME =	USER NAME = *USER*	DESIGNED -	REVISED -	STATE OF ILLINOIS DEPARTMENT OF TRANSPORTATION	IL RTE 2 PLAN & PROFILE			F.A.P. RTE. 742	SECTION (32, 33) R-1	COUNTY WINNEBAGO	TOTAL SHEETS 705	SHEET NO. 118
FILEL		DRAWN -	REVISED -		SCALE: 1:20	SHEET NO. 13 OF 49 SHEETS	STA. 410+00 TO STA. 416+00	CONTRACT NO. 64821				
		CHECKED -	REVISED -		ILLINOIS FED. AID PROJECT							
		DATE -	REVISED -									