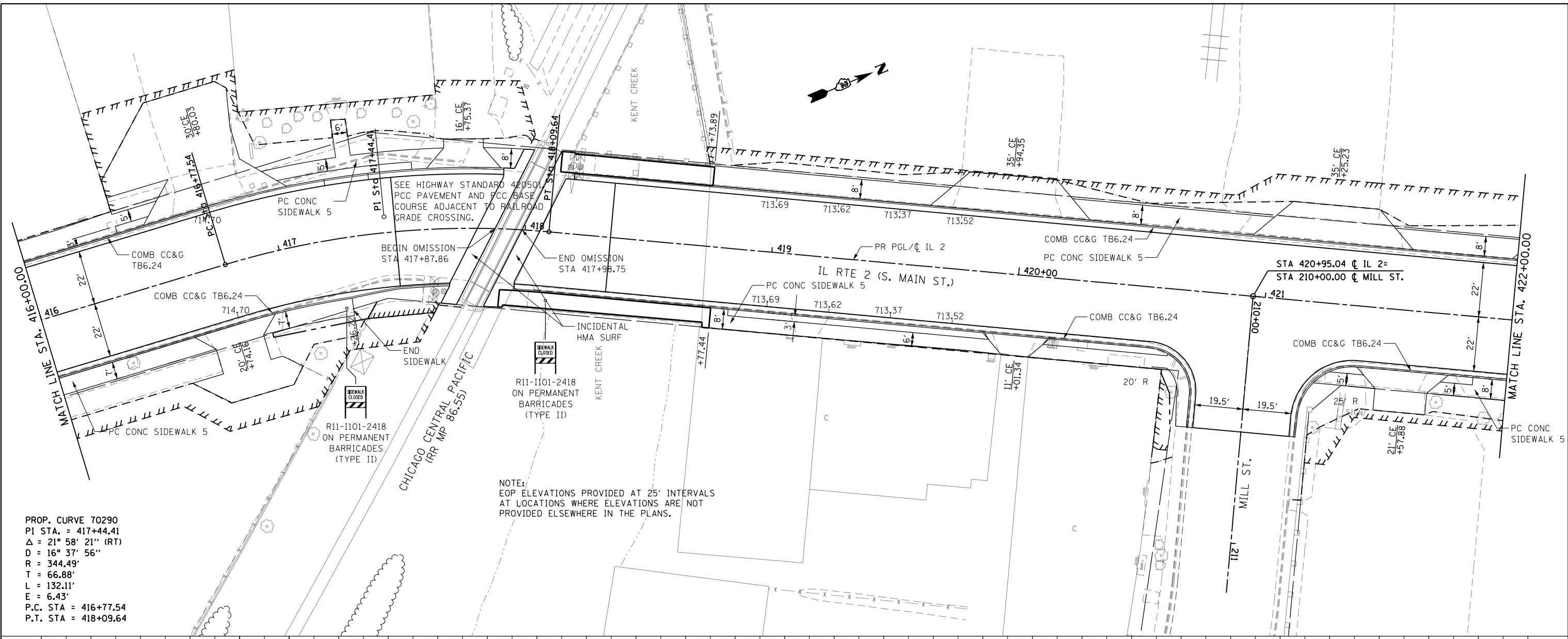


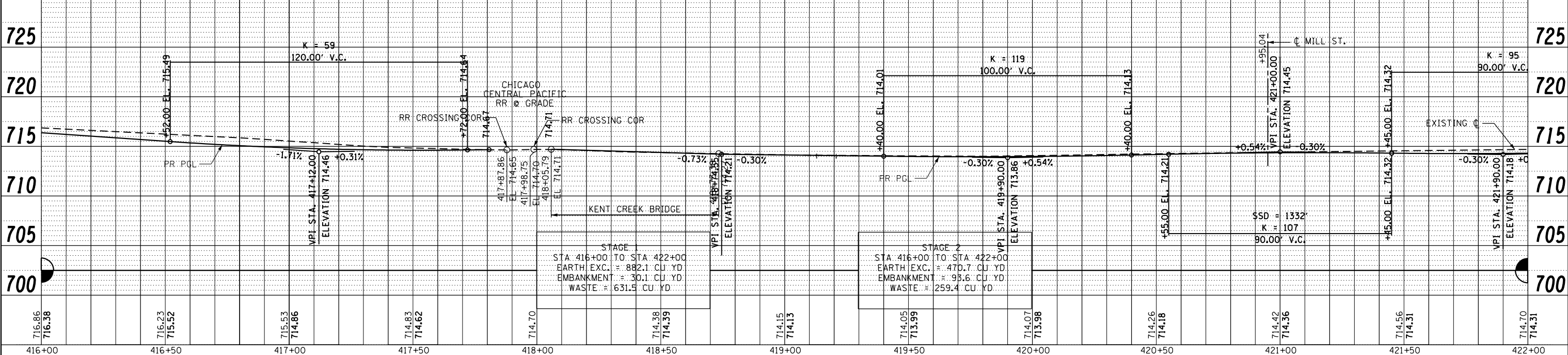
PLAN	SURVEYED	DATE
	PLOTTED	BY
	ALIGNED	
	CHECKED	
	FILED	
	NO.	
	NO.	
	NO.	

PROFILE	SURVEYED	DATE
	GRADES	BY
	CHECKED	
	STRUCTURE	
	NOTATIONS	
	CHFD	
	NO.	
	NO.	
	NO.	

PROP. CURVE 70290
 PI STA. = 417+44.41
 $\Delta = 21^\circ 58' 21''$ (RT)
 $D = 16^\circ 37' 56''$
 $R = 344.49'$
 $T = 66.88'$
 $L = 132.11'$
 $E = 6.43'$
 P.C. STA = 416+77.54
 P.T. STA = 418+09.64



NOTE:
 EOP ELEVATIONS PROVIDED AT 25' INTERVALS
 AT LOCATIONS WHERE ELEVATIONS ARE NOT
 PROVIDED ELSEWHERE IN THE PLANS.



FILE NAME =	USER NAME = *USER*	DESIGNED -	REVISED -	STATE OF ILLINOIS DEPARTMENT OF TRANSPORTATION	IL RTE 2 PLAN & PROFILE	F.A.P. RTE.	SECTION	COUNTY	TOTAL SHEETS	SHEET NO.	
FILEL		DRAWN -	REVISED -			742	(32, 33) R-1	WINNEBAGO	705	119	
		CHECKED -	REVISED -			CONTRACT NO. 64821					
		DATE -	REVISED -			ILLINOIS FED. AID PROJECT					