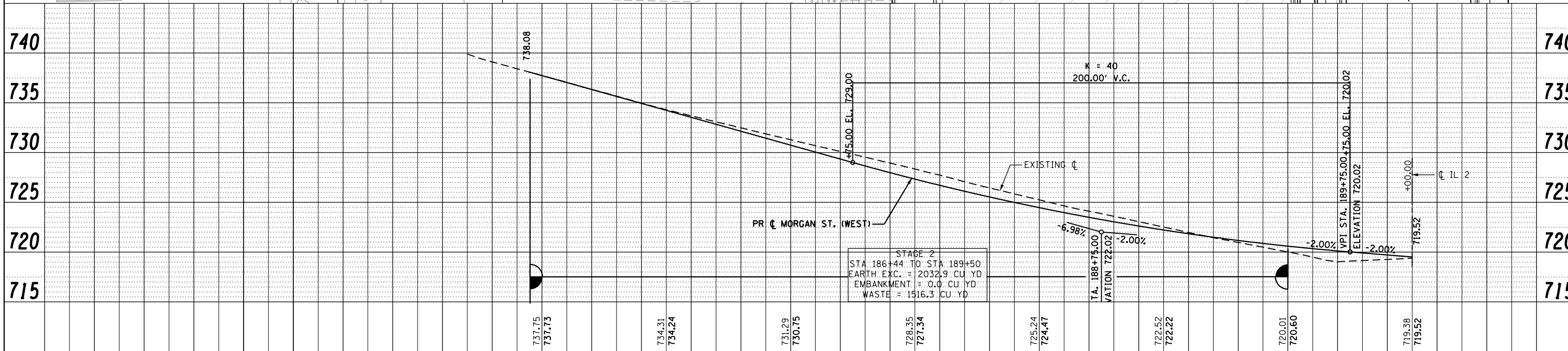
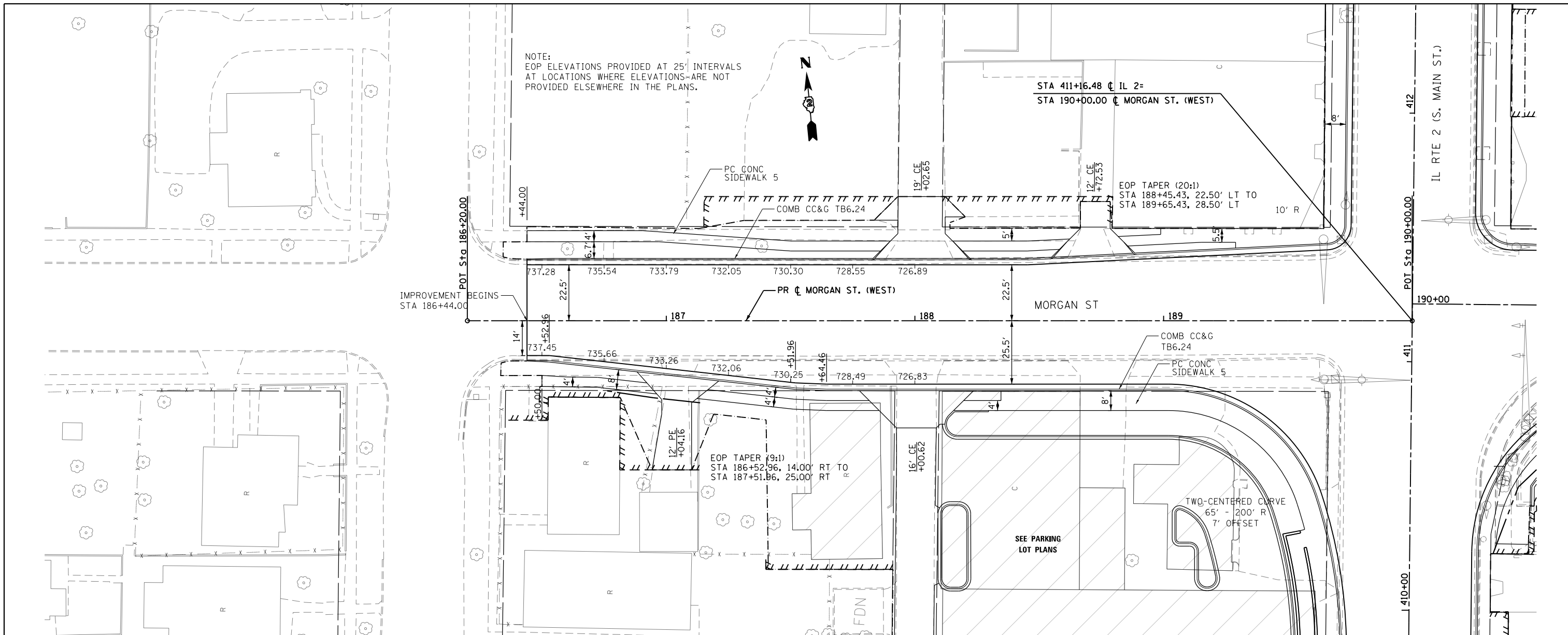


PLAN	SURVEYED	BY	DATE
	PLOTTED		
	ALIGNED		
	CHECKED		
	FILED		
	NO.		
	NO.		
	NO.		

PROFILE	SURVEYED	BY	DATE
	PLOTTED		
	GRADES		
	CHECKED		
	STRUCTURE		
	NOTATIONS		
	CHFD		
	NO.		
	NO.		
	NO.		



FILE NAME =	USER NAME = *USER*	DESIGNED -	REVISED -	<b>STATE OF ILLINOIS DEPARTMENT OF TRANSPORTATION</b>	<b>MORGAN ST. (WEST LEG) PLAN AND PROFILE</b>	F.A.P. RT. =	SECTION	COUNTY	TOTAL SHEETS	SHEET NO.	
*FILEL*		DRAWN -	REVISED -			742	(32, 33) R-1	WINNEBAGO	705	144	
		CHECKED -	REVISED -			CONTRACT NO. 64821					
		DATE -	REVISED -			ILLINOIS FED. AID PROJECT					

NOTE:  
EOP ELEVATIONS PROVIDED AT 25' INTERVALS  
AT LOCATIONS WHERE ELEVATIONS ARE NOT  
PROVIDED ELSEWHERE IN THE PLANS.



STAGE 2  
STA 186+44 TO STA 189+50  
EARTH EXC. = 2032.9 CU. YD  
EMBANKMENT = 0.0 CU. YD  
WASTE = 1516.3 CU. YD

K = 40  
200.00' V.C.

TA. 188+75.00  
VARIATION 722.02

VPI STA. 189+75.00, ELEV. 720.02  
ELEVATION 720.02

IL 2

SCALE: 1:20 SHEET NO. 39 OF 49 SHEETS STA. 186+20.00 TO STA. 190+00.00