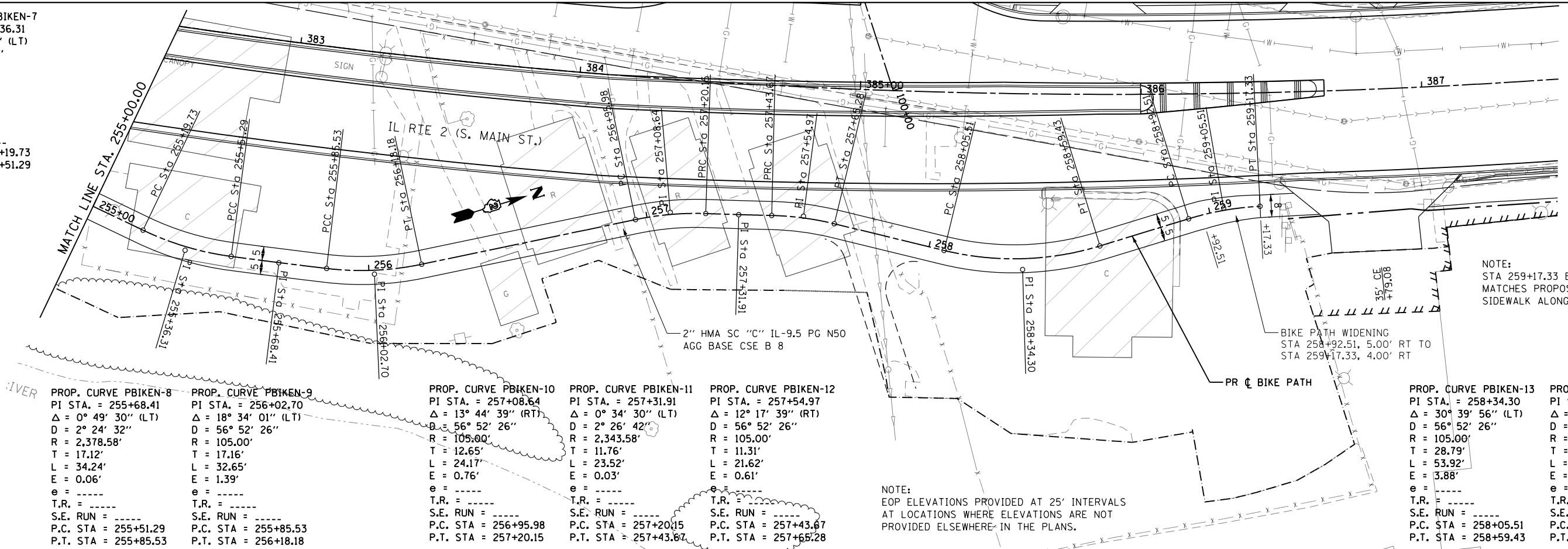


PROP. CURVE PBIKEN-7  
 PI STA. = 255+36.31  
 $\Delta = 17^\circ 56' 49''$  (LT)  
 $D = 56^\circ 52' 26''$   
 $R = 105.00'$   
 $T = 16.58'$   
 $L = 31.56'$   
 $E = 1.30'$   
 $e =$   
 T.R. =  
 S.E. RUN =  
 P.C. STA = 255+19.73  
 P.T. STA = 255+51.29

PLAN	SURVEYED	DATE
	PLOTTED	
	NOTE BOOK	
	NO.	
	CHECKED	
	FILE NAME	
	NO.	



NOTE:  
 STA 259+17.33 BIKE PATH  
 MATCHES PROPOSED TYPICAL  
 SIDEWALK ALONG IL 2.

PROP. CURVE PBIKEN-8  
 PI STA. = 255+68.41  
 $\Delta = 0^\circ 49' 30''$  (LT)  
 $D = 2^\circ 24' 32''$   
 $R = 2,378.58'$   
 $T = 17.12'$   
 $L = 34.24'$   
 $E = 0.06'$   
 $e =$   
 T.R. =  
 S.E. RUN =  
 P.C. STA = 255+51.29  
 P.T. STA = 255+85.53

PROP. CURVE PBIKEN-9  
 PI STA. = 256+02.70  
 $\Delta = 18^\circ 34' 01''$  (LT)  
 $D = 56^\circ 52' 26''$   
 $R = 105.00'$   
 $T = 17.16'$   
 $L = 32.65'$   
 $E = 1.39'$   
 $e =$   
 T.R. =  
 S.E. RUN =  
 P.C. STA = 255+85.53  
 P.T. STA = 256+18.18

PROP. CURVE PBIKEN-10  
 PI STA. = 257+08.64  
 $\Delta = 13^\circ 44' 39''$  (RT)  
 $D = 56^\circ 52' 26''$   
 $R = 105.00'$   
 $T = 12.65'$   
 $L = 24.17'$   
 $E = 0.76'$   
 $e =$   
 T.R. =  
 S.E. RUN =  
 P.C. STA = 256+95.98  
 P.T. STA = 257+20.15

PROP. CURVE PBIKEN-11  
 PI STA. = 257+31.91  
 $\Delta = 0^\circ 34' 30''$  (LT)  
 $D = 2^\circ 26' 42''$   
 $R = 2,343.58'$   
 $T = 11.76'$   
 $L = 23.52'$   
 $E = 0.03'$   
 $e =$   
 T.R. =  
 S.E. RUN =  
 P.C. STA = 257+20.15  
 P.T. STA = 257+43.67

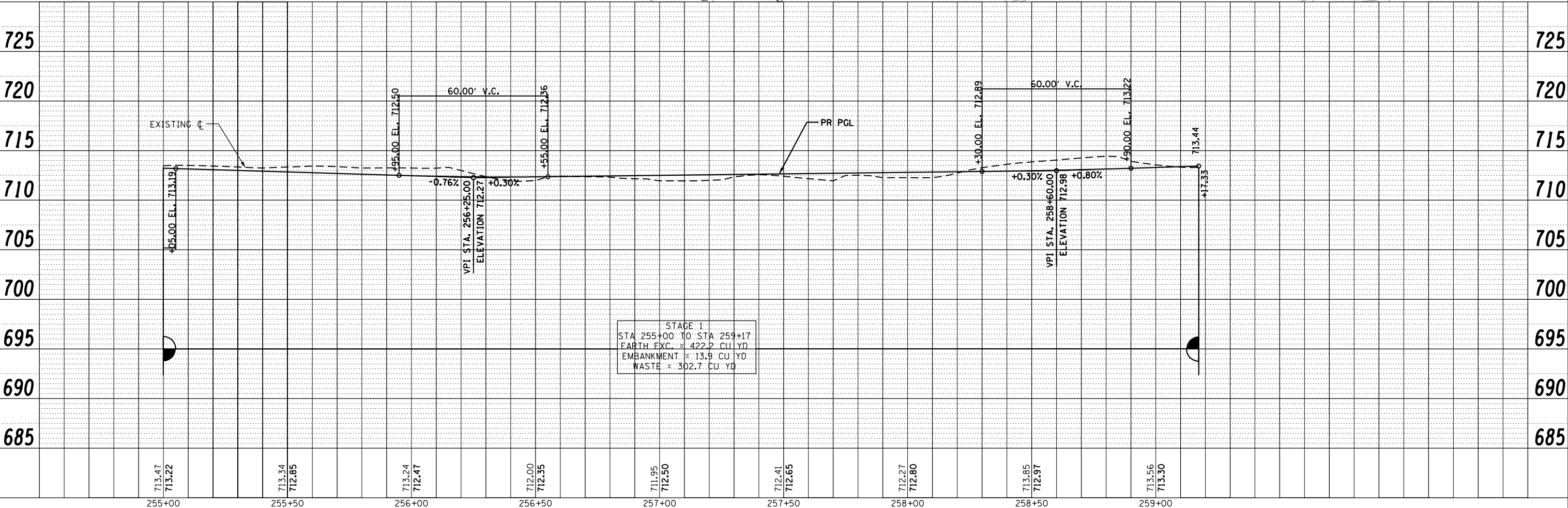
PROP. CURVE PBIKEN-12  
 PI STA. = 257+54.97  
 $\Delta = 12^\circ 17' 39''$  (RT)  
 $D = 56^\circ 52' 26''$   
 $R = 105.00'$   
 $T = 11.31'$   
 $L = 21.62'$   
 $E = 0.61'$   
 $e =$   
 T.R. =  
 S.E. RUN =  
 P.C. STA = 257+43.67  
 P.T. STA = 257+65.28

NOTE:  
 EOP ELEVATIONS PROVIDED AT 25' INTERVALS  
 AT LOCATIONS WHERE ELEVATIONS ARE NOT  
 PROVIDED ELSEWHERE IN THE PLANS.

PROP. CURVE PBIKEN-13  
 PI STA. = 258+34.30  
 $\Delta = 30^\circ 39' 56''$  (LT)  
 $D = 56^\circ 52' 26''$   
 $R = 105.00'$   
 $T = 28.79'$   
 $L = 53.92'$   
 $E = 3.88'$   
 $e =$   
 T.R. =  
 S.E. RUN =  
 P.C. STA = 258+05.51  
 P.T. STA = 258+59.43

PROP. CURVE PBIKEN-14  
 PI STA. = 259+05.51  
 $\Delta = 14^\circ 06' 59''$  (RT)  
 $D = 56^\circ 52' 26''$   
 $R = 105.00'$   
 $T = 13.00'$   
 $L = 24.82'$   
 $E = 0.80'$   
 $e =$   
 T.R. =  
 S.E. RUN =  
 P.C. STA = 258+92.51  
 P.T. STA = 259+17.33

PROFILE	SURVEYED	DATE
	PLOTTED	
	GRADES CHECKED	
	STRUCTURE NOTATIONS CHECKED	
	NO.	



FILE NAME =	USER NAME = *USER*	DESIGNED -	REVISED -	<b>STATE OF ILLINOIS</b> <b>DEPARTMENT OF TRANSPORTATION</b>	<b>BIKE PATH</b> <b>PLAN AND PROFILE</b>	F.A.P. RTE. = 742	SECTION = (32, 33) R-1	COUNTY = WINNEBAGO	TOTAL SHEETS = 705	SHEET NO. = 154	
*FILEL*	PLOT SCALE = *SCALE*	DRAWN -	REVISED -			SCALE:	SHEET NO. 49 OF 49 SHEETS	STA. 255+00.00 TO STA. 259+17.33	CONTRACT NO. 64821		ILLINOIS FED. AID PROJECT
	PLOT DATE = *DATE*	CHECKED -	REVISED -								
		DATE -	REVISED -								