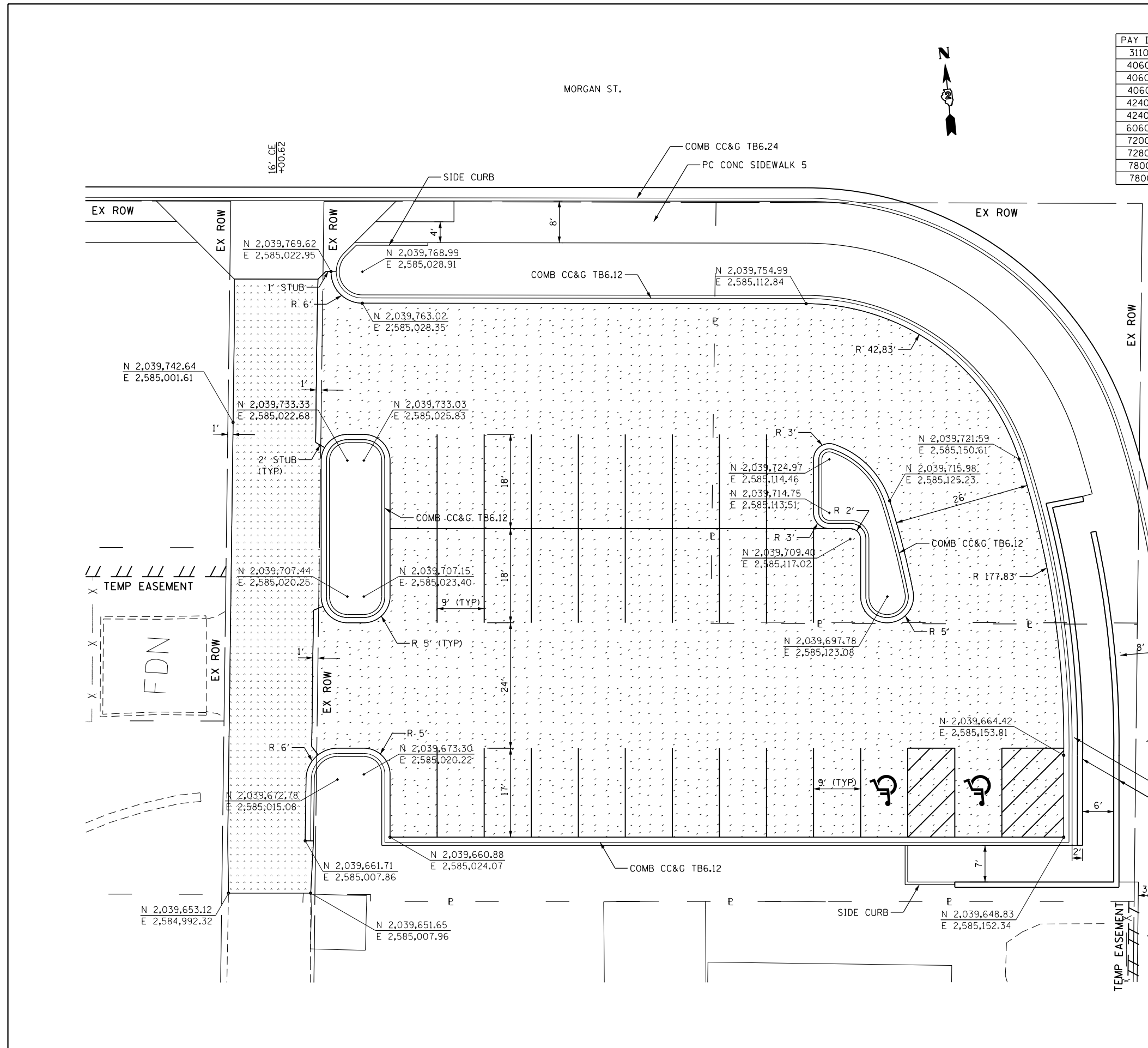


PARKING LOT BILL OF MATERIALS

PAY ITEM #	PAY ITEM	UNIT	QUANTITY
31100910	SUBBASE GRANULAR MATERIAL, TYPE A 12"	SO YD	1735
40600100	BITUMINOUS MATERIALS (PRIME COAT)	TON	4
40603080	HOT-MIX ASPHALT BINDER COURSE, IL-19.0, N50	TON	207
40603310	HOT-MIX ASPHALT SURFACE COURSE, MIX "C", N50	TON	183
42400200	PORTLAND CEMENT CONCRETE SIDEWALK 5 INCH	SO FT	228
42400800	DETECTABLE WARNINGS	SO FT	60
60603800	COMBINATION CONCRETE CURB AND GUTTER, TYPE B- 6.12	FOOT	567
72000100	SIGN PANEL - TYPE 1	SO FT	4
72800100	TELESCOPING STEEL SIGN SUPPORT	FOOT	24
78001100	PAINT PAVEMENT MARKING - LETTERS AND SYMBOLS	SO FT	5.8
78001110	PAINT PAVEMENT MARKING - LINE 4"	FOOT	749

TOTAL CUT = 241.3 CU YD
 TOTAL FILL = 255.5 CU YD
 15 CU YD OF FILL REQUIRED
 FILL CAN COME FROM ANY STAGE OF IL 2 OR SIDESTREET CONSTRUCTION.

STORM SEWER AND RETAINING WALL QUANTITIES HAVE BEEN INCLUDED IN THE DRAINAGE AND RETAINING WALL QUANTITIES.



LEGEND

- 2" HMA SC "C" N50
- 2" HMA BC IL-19.0 N50
- SUB GRAN MAT A 12
- 2" HMA SC "C" N50
- 4" HMA BC IL-19.0 N50
- SUB GRAN MAT A 12

- NOTES:
- ALL PARKING LOT PAVEMENT MARKING LINES SHALL BE PAINT PAVEMENT MARKING - LINE 4", IN ACCORDANCE WITH DISTRICT DETAIL 44.2 (RESERVED PARKING SIGN DETAIL).
 - ALL PARKING LOT PAVEMENT MARKING SYMBOLS SHALL BE PAINT PAVEMENT MARKING - LETTERS & SYMBOLS, IN ACCORDANCE WITH DISTRICT DETAIL 69.4 (DISABLED SYMBOL).
 - SEE DISTRICT DETAIL 25.1 (ENTRANCE APPROACHES - URBAN AREAS) FOR DETAILS OF PROPOSED ENTRANCES.
 - SEE HIGHWAY STANDARD 424026 (ENTRANCE/ALLEY PEDESTRIAN CROSSINGS) FOR DETAIL OF SIDE CURB. ALL SIDE CURB SHALL NOT BE PAID FOR SEPARATELY BUT SHALL BE INCLUDED IN THE CONTRACT UNIT COST FOR PC CONC SIDEWALK OF THE DEPTH SPECIFIED.

FILE NAME =	USER NAME = *USER*	DESIGNED -	REVISED -
*FILE#		DRAWN -	REVISED -
	PLOT SCALE = *SCALE*	CHECKED -	REVISED -
	PLOT DATE = *DATE*	DATE -	REVISED -

STATE OF ILLINOIS
 DEPARTMENT OF TRANSPORTATION

PARKING LOT - GEOMETRY

SCALE: 1:10 SHEET NO. 2 OF 3 SHEETS STA. TO STA.

F.A.P. RTE.	SECTION	COUNTY	TOTAL SHEETS	SHEET NO.
742	(32,33) R-1	WINNEBAGO	705	156
CONTRACT NO. 64821				
ILLINOIS FED. AID PROJECT				