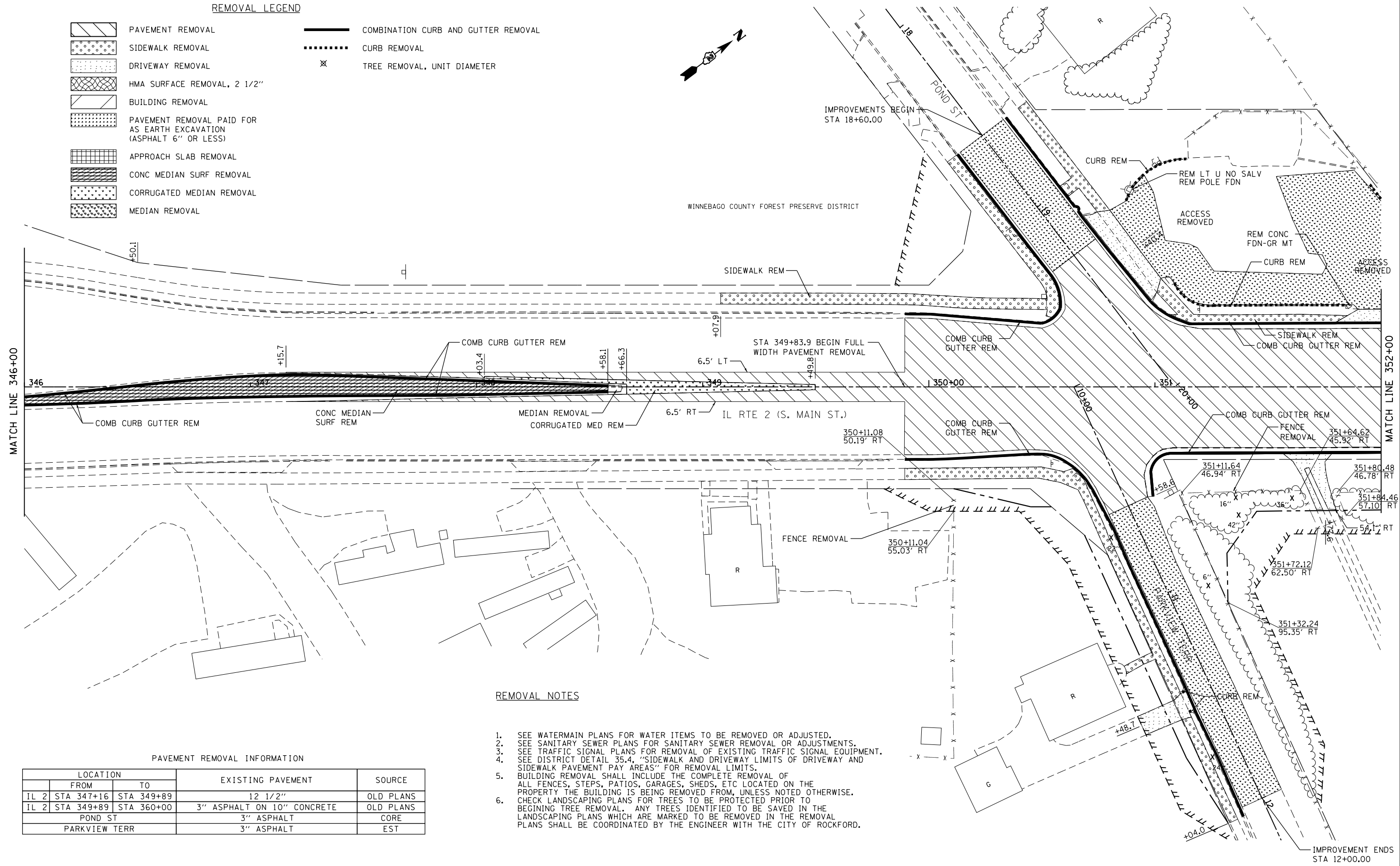
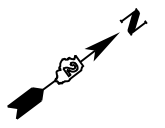


REMOVAL LEGEND

- PAVEMENT REMOVAL
- SIDEWALK REMOVAL
- DRIVEWAY REMOVAL
- HMA SURFACE REMOVAL, 2 1/2"
- BUILDING REMOVAL
- PAVEMENT REMOVAL PAID FOR AS EARTH EXCAVATION (ASPHALT 6" OR LESS)
- APPROACH SLAB REMOVAL
- CONC MEDIAN SURF REMOVAL
- CORRUGATED MEDIAN REMOVAL
- MEDIAN REMOVAL
- COMBINATION CURB AND GUTTER REMOVAL
- CURB REMOVAL
- TREE REMOVAL, UNIT DIAMETER



REMOVAL NOTES

1. SEE WATERMAIN PLANS FOR WATER ITEMS TO BE REMOVED OR ADJUSTED.
2. SEE SANITARY SEWER PLANS FOR SANITARY SEWER REMOVAL OR ADJUSTMENTS.
3. SEE TRAFFIC SIGNAL PLANS FOR REMOVAL OF EXISTING TRAFFIC SIGNAL EQUIPMENT.
4. SEE DISTRICT DETAIL 35.4, "SIDEWALK AND DRIVEWAY LIMITS OF DRIVEWAY AND SIDEWALK PAVEMENT PAY AREAS" FOR REMOVAL LIMITS.
5. BUILDING REMOVAL SHALL INCLUDE THE COMPLETE REMOVAL OF ALL FENCES, STEPS, PATIOS, GARAGES, SHEDS, ETC LOCATED ON THE PROPERTY THE BUILDING IS BEING REMOVED FROM, UNLESS NOTED OTHERWISE.
6. CHECK LANDSCAPING PLANS FOR TREES TO BE PROTECTED PRIOR TO BEGINNING TREE REMOVAL. ANY TREES IDENTIFIED TO BE SAVED IN THE LANDSCAPING PLANS WHICH ARE MARKED TO BE REMOVED IN THE REMOVAL PLANS SHALL BE COORDINATED BY THE ENGINEER WITH THE CITY OF ROCKFORD.

PAVEMENT REMOVAL INFORMATION

LOCATION		EXISTING PAVEMENT	SOURCE
FROM	TO		
IL 2	STA 347+16 STA 349+89	12 1/2"	OLD PLANS
IL 2	STA 349+89 STA 360+00	3" ASPHALT ON 10" CONCRETE	OLD PLANS
POND ST		3" ASPHALT	CORE
PARKVIEW TERR		3" ASPHALT	EST

FILE NAME =	USER NAME = Hogensonjd	DESIGNED -	REVISED -
et:\pw\work\p\dot\hogensonjd\0328875\0264821-sht-rem-346.dgn		DRAWN -	REVISED -
	PLOT SCALE = 40.0000' / in.	CHECKED -	REVISED -
	PLOT DATE = Thu Dec 13 12:01:25 2012	DATE -	REVISED -

STATE OF ILLINOIS
DEPARTMENT OF TRANSPORTATION

REMOVAL PLANS
IL 2

SCALE: 1:20 SHEET NO. 2 OF 23 SHEETS STA. 346+00 TO STA. 352+00

F.A.P. RTE.	SECTION	COUNTY	TOTAL SHEETS	SHEET NO.
742	(32, 33) R-1	WINNEBAGO	705	159
CONTRACT NO. 64821				
ILLINOIS FED. AID PROJECT				