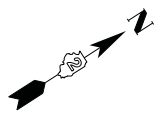


CONTRACTOR TO PROTECT EXISTING SHRUB BED AREAS AT RESIDENTIAL ENTRANCE. ALL BED SOIL, MULCH AND PLANT MATERIAL TO BE RESTORED BASED ON EXISTING CONDITIONS.

LEGEND	
	COLORED SURFACE
	SODDING, SALT TOLERANT
	PCC ACCENT STRIP
	SEEDING, CLASS 1A

NOTES:
SEE PLAN AND PROFILE SHEETS FOR CONSTRUCTION LAYOUT AND ADDITIONAL INFORMATION



COMPANY NAME: Dave Rife
PROJECT CONTACT: Dave Rife
DATE PLOTTED: 11/19/2012 5:06:14 PM
FILE NAME: 0264821.sht+nsdca-IL-2-358.dgn
PLOT DRIVER: pdf.plt, no_level.plt, q
PEN TABLE: standard-trans.tbl



USER NAME = whood	DESIGNED - DLR	REVISED -
	DRAWN - WJH	REVISED -
PLOT SCALE =	CHECKED - DVC	REVISED -
PLOT DATE = 11/19/2012	DATE - 11/19/2012	REVISED -

STATE OF ILLINOIS
DEPARTMENT OF TRANSPORTATION

IL RTE 2 LANDSCAPE PLANS

SCALE: 1"=20' SHEET 5 OF 21 SHEETS STA. 358+00 TO STA. 364+00

F.A.P. RTE.	SECTION	COUNTY	TOTAL SHEETS	SHEET NO.
742	(32, 33) R-1	WINNEBAGO	705	283
CONTRACT NO.				
ILLINOIS FED. AID PROJECT				