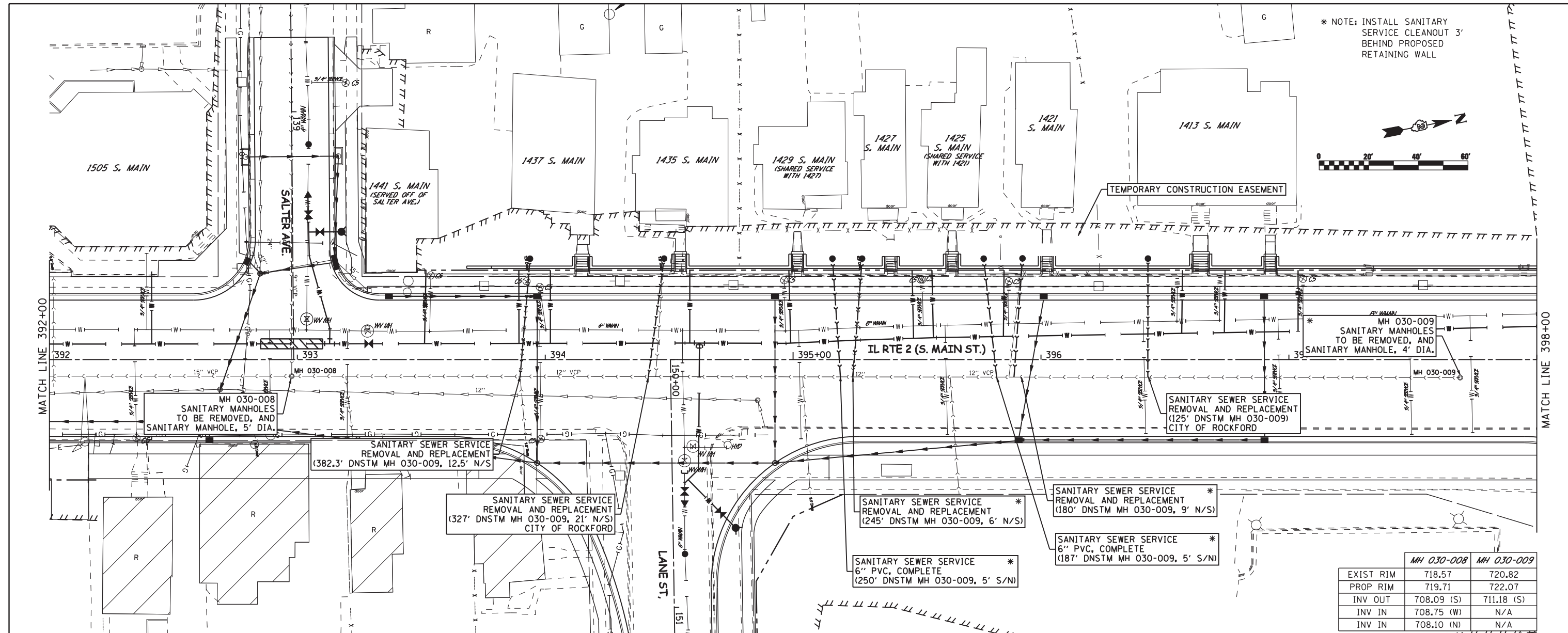
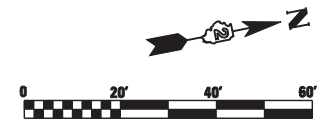
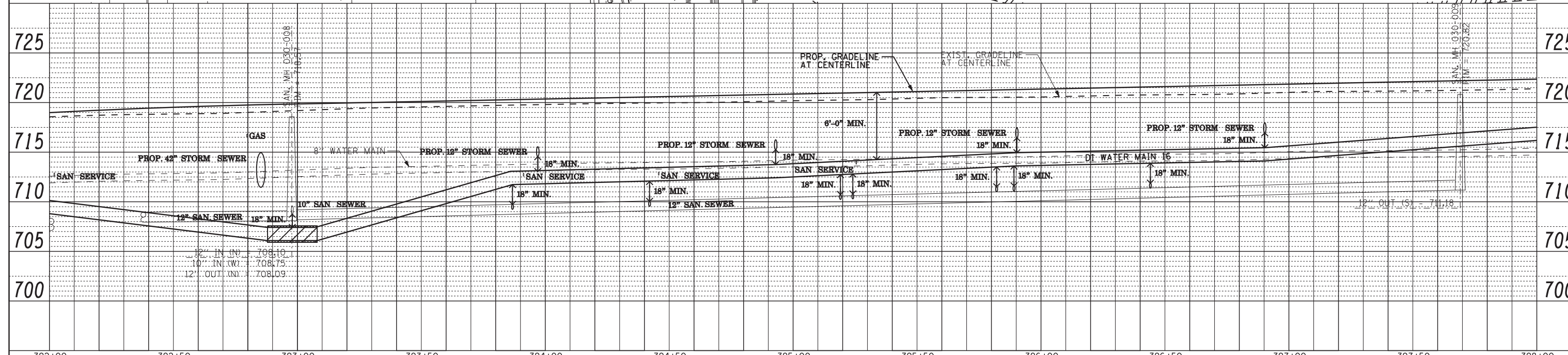


\* NOTE: INSTALL SANITARY SERVICE CLEANOUT 3' BEHIND PROPOSED RETAINING WALL



	MH 030-008	MH 030-009
EXIST RIM	718.57	720.82
PROP RIM	719.71	722.07
INV OUT	708.09 (S)	711.18 (S)
INV IN	708.75 (W)	N/A
INV IN	708.10 (N)	N/A



<b>ROCK RIVER WATER RECLAMATION DISTRICT</b>	USER NAME = BOB FREY	DESIGNED MKR	REVISED 07/10/2012 BPF	<b>STATE OF ILLINOIS DEPARTMENT OF TRANSPORTATION</b>	<b>PROPOSED SANITARY SEWER PLAN &amp; PROFILE IL RTE 2</b>	F.A.P. RTE. 742	SECTION (32, 33) R-1	COUNTY WINNEBAGO	TOTAL SHEETS 705	SHEET NO. 346
	PLOT SCALE = AS NOTED	CHECKED DLC	REVISED 10/02/2012 BPF			CONTRACT NO. 64821				
	PLOT DATE = 07/16/2012	DATE 04/20/2012	REVISED 11/27/2012 BPF			ILLINOIS FED. AID PROJECT				
	SCALE: AS NOTED					SHEET NO. 346 OF 705 SHEETS			STA. 392+00 TO STA. 398+00	