
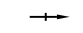




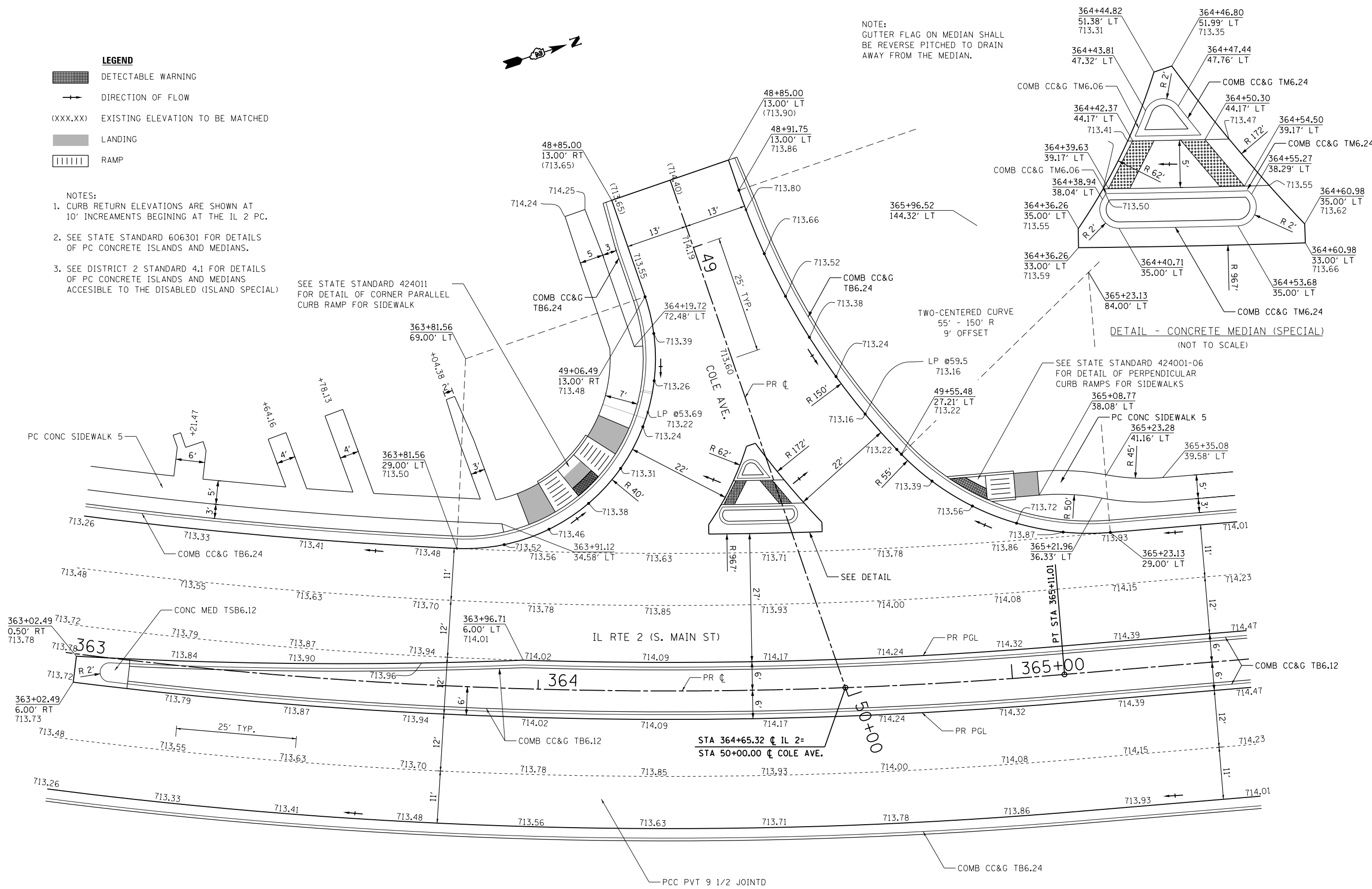
- LEGEND**
-  DETECTABLE WARNING
 -  DIRECTION OF FLOW
 - (XXX.XX) EXISTING ELEVATION TO BE MATCHED
 -  LANDING
 -  RAMP

- NOTES:**
1. CURB RETURN ELEVATIONS ARE SHOWN AT 10' INCREMENTS BEGINNING AT THE IL 2 PC.
 2. SEE STATE STANDARD 606301 FOR DETAILS OF PC CONCRETE ISLANDS AND MEDIANS.
 3. SEE DISTRICT 2 STANDARD 4.1 FOR DETAILS OF PC CONCRETE ISLANDS AND MEDIANS ACCESSIBLE TO THE DISABLED (ISLAND SPECIAL)

SEE STATE STANDARD 424011 FOR DETAIL OF CORNER PARALLEL CURB RAMP FOR SIDEWALK

DETAIL - CONCRETE MEDIAN (SPECIAL)
(NOT TO SCALE)

NOTE:
GUTTER FLAG ON MEDIAN SHALL BE REVERSE PITCHED TO DRAIN AWAY FROM THE MEDIAN.



FILE NAME =	USER NAME = *USER*	DESIGNED -	REVISED -	STATE OF ILLINOIS DEPARTMENT OF TRANSPORTATION	INTERSECTION DETAIL COLE AVE.			F.A.P. RTE.	SECTION	COUNTY	TOTAL SHEETS	SHEET NO.	
*FILE#		DRAWN -	REVISED -		SCALE: 1" = 10'	SHEET NO. 5 OF 26 SHEETS	STA.	TO STA.	742	(32,33) R-1	WINNEBAGO	705	378
		CHECKED -	REVISED -		CONTRACT NO. 64821								
		DATE -	REVISED -		ILLINOIS FED. AID PROJECT								