
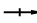



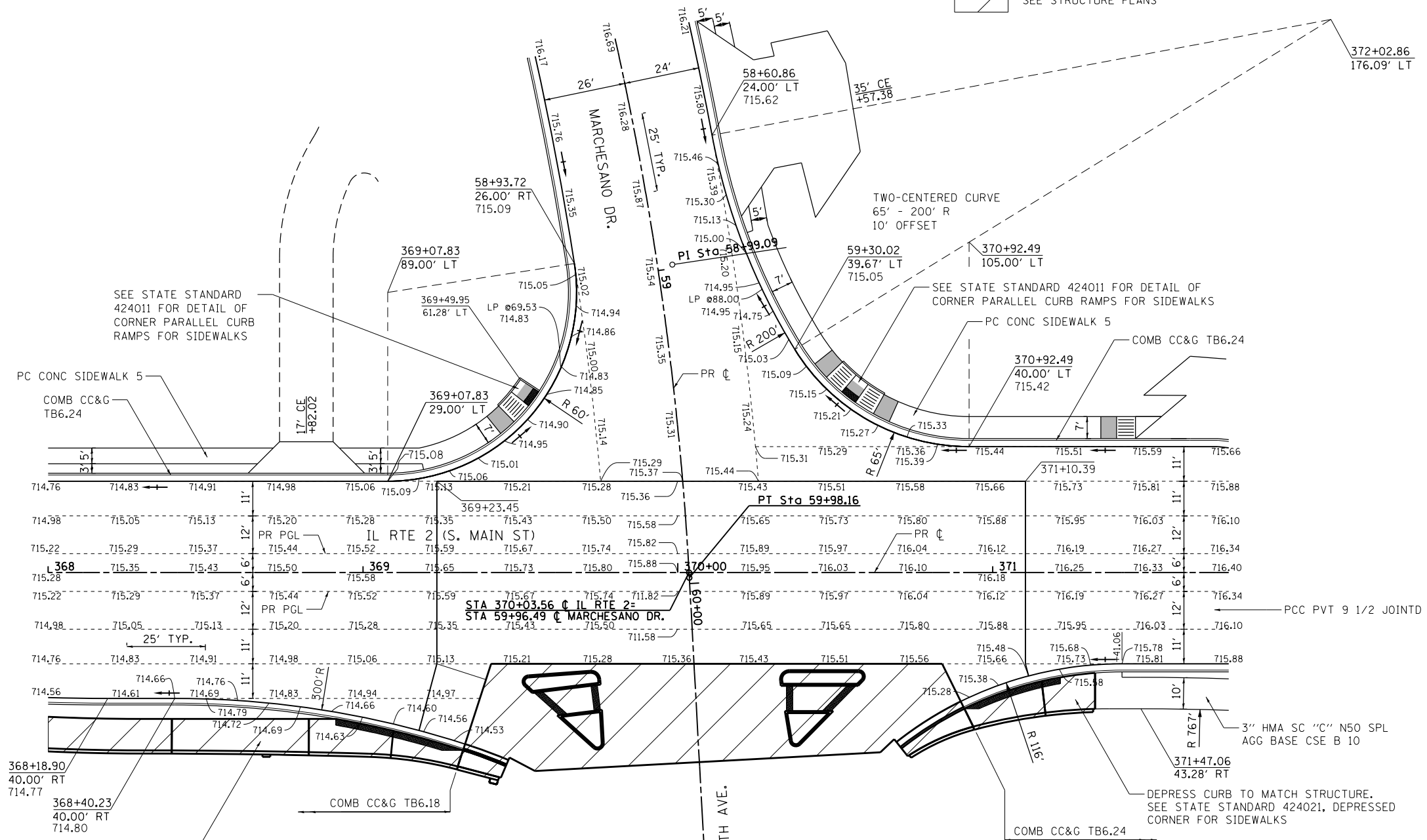


- LEGEND**
-  DETECTABLE WARNING
  -  DIRECTION OF FLOW
  - (XXX.XX) EXISTING ELEVATION TO BE MATCHED
  -  LANDING
  -  RAMP
  -  SEE STRUCTURE PLANS

- NOTES:**
1. CURB RETURN ELEVATIONS ARE SHOWN AT 10' INCREMENTS BEGINNING AT THE IL 2 PC.
  2. SEE STATE STANDARD 420401-08 FOR DETAILS OF BRIDGE APPROACH PAVEMENT CONNECTOR
  3. SEE DISTRICT 2 STANDARD 25.1 FOR DETAILS OF ENTRANCE APPROACHES - URBAN AREA
  4. SEE DISTRICT 2 STANDARD 4.1 FOR DETAILS OF PC CONCRETE ISLANDS AND MEDIANS ACCESSIBLE TO THE DISABLED (ISLAND SPECIAL).



CONSTRUCT SIDE CURB ALONG ROADWAY SIDE OF STRUCTURE MONOLITHICALLY WITH ROADWAY CURB AND GUTTER. SEE STATE STANDARD 424001, PERPENDICULAR CURB RAMPS FOR SIDEWALKS. THE SIDE CURB AT THIS LOCATION WILL NOT BE MEASURED FOR PAYMENT BUT WILL BE INCLUDED IN THE CONTRACT UNIT PRICE FOR COMBINATION CONCRETE CURB AND GUTTER TYPE B-6.18.

|             |                     |            |           |   |  |                          |      |                           |         |             |              |           |     |
|-------------|---------------------|------------|-----------|---|--|--------------------------|------|---------------------------|---------|-------------|--------------|-----------|-----|
| FILE NAME = | USER NAME = \$USER* | DESIGNED - | REVISED - | <b>STATE OF ILLINOIS<br/>DEPARTMENT OF TRANSPORTATION</b> | <b>INTERSECTION DETAIL<br/>MARCHESANO DR./15TH ST.</b> |                          |      | F.A.P. RTE.               | SECTION | COUNTY      | TOTAL SHEETS | SHEET NO. |     |
| *FILEL*     |                     | DRAWN -    | REVISED - |   | SCALE: 1"=20'  | SHEET NO. 6 OF 26 SHEETS | STA. | TO STA.                   | 742     | (32,33) R-1 | WINNEBAGO    | 705       | 379 |
|             |                     | CHECKED -  | REVISED - |   |  |                          |      | CONTRACT NO. 64821        |         |             |              |           |     |
|             |                     | DATE -     | REVISED - |   |  |                          |      | ILLINOIS FED. AID PROJECT |         |             |              |           |     |