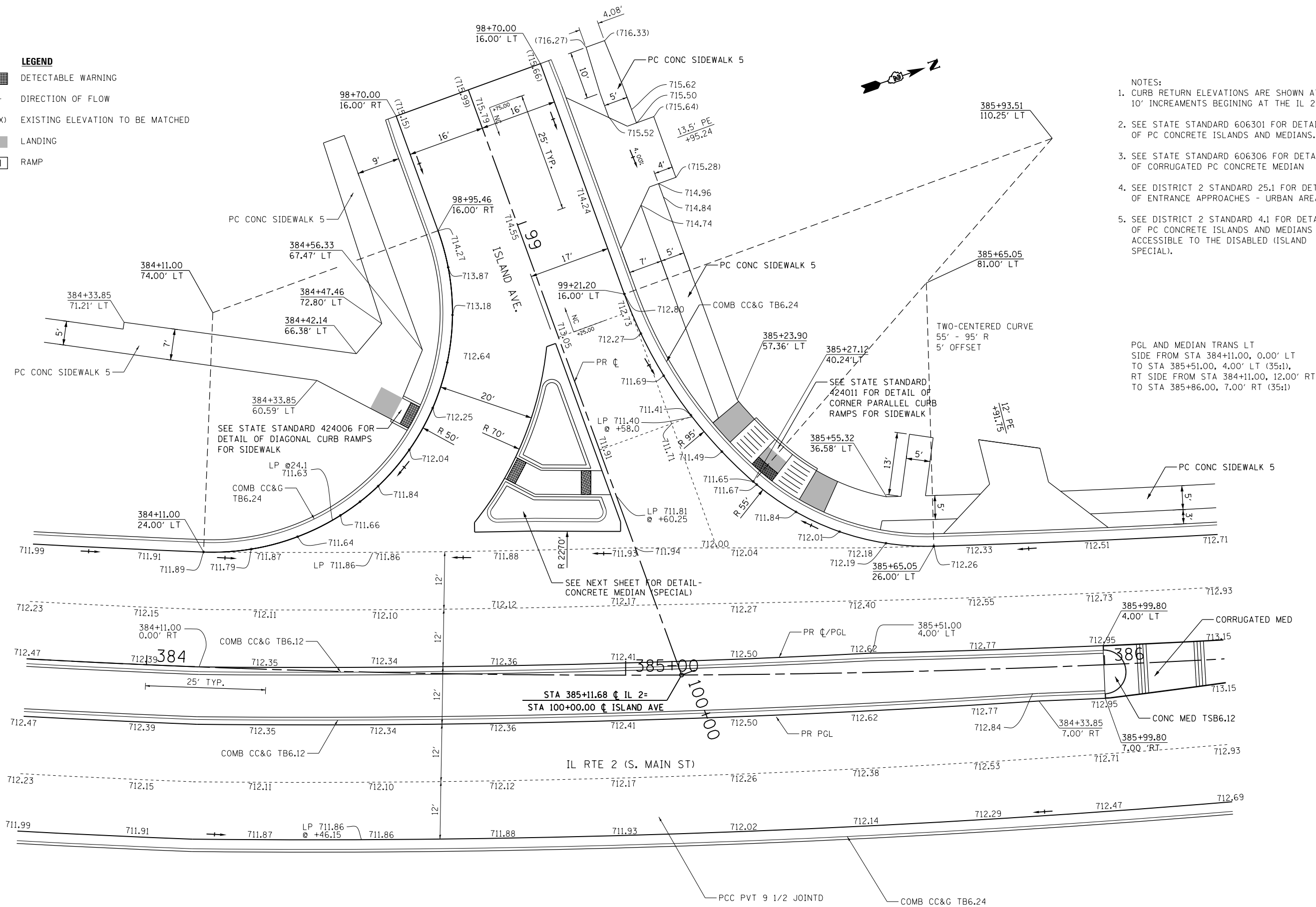


LEGEND

	DETECTABLE WARNING
	DIRECTION OF FLOW
(XXX.XX)	EXISTING ELEVATION TO BE MATCHED
	LANDING
	RAMP



- NOTES:
- CURB RETURN ELEVATIONS ARE SHOWN AT 10' INCREMENTS BEGINNING AT THE IL 2 PC.
 - SEE STATE STANDARD 606301 FOR DETAILS OF PC CONCRETE ISLANDS AND MEDIANS.
 - SEE STATE STANDARD 606306 FOR DETAILS OF CORRUGATED PC CONCRETE MEDIAN
 - SEE DISTRICT 2 STANDARD 25.1 FOR DETAILS OF ENTRANCE APPROACHES - URBAN AREA
 - SEE DISTRICT 2 STANDARD 4.1 FOR DETAILS OF PC CONCRETE ISLANDS AND MEDIANS ACCESSIBLE TO THE DISABLED (ISLAND SPECIAL).

PGL AND MEDIAN TRANS LT
 SIDE FROM STA 384+11.00, 0.00' LT
 TO STA 385+51.00, 4.00' LT (35:1),
 RT SIDE FROM STA 384+11.00, 12.00' RT
 TO STA 385+86.00, 7.00' RT (35:1)

STATE OF ILLINOIS
 DEPARTMENT OF TRANSPORTATION

INTERSECTION DETAIL
 ISLAND AVE.

FILE NAME =
 FILEL

USER NAME = *USER*
 PLOT SCALE = *SCALE*
 PLOT DATE = *DATE*

DESIGNED -
 DRAWN -
 CHECKED -
 DATE -

REVISED -
 REVISED -
 REVISED -
 REVISED -

STA 385+11.68 @ IL 2=
 STA 100+00.00 @ ISLAND AVE

SCALE: 1"=10'
 SHEET NO. 10 OF 26 SHEETS
 STA. TO STA.

F.A.P. RTE.	SECTION	COUNTY	TOTAL SHEETS	SHEET NO.
742	(32,33) R-1	WINNEBAGO	705	383
CONTRACT NO. 64821				