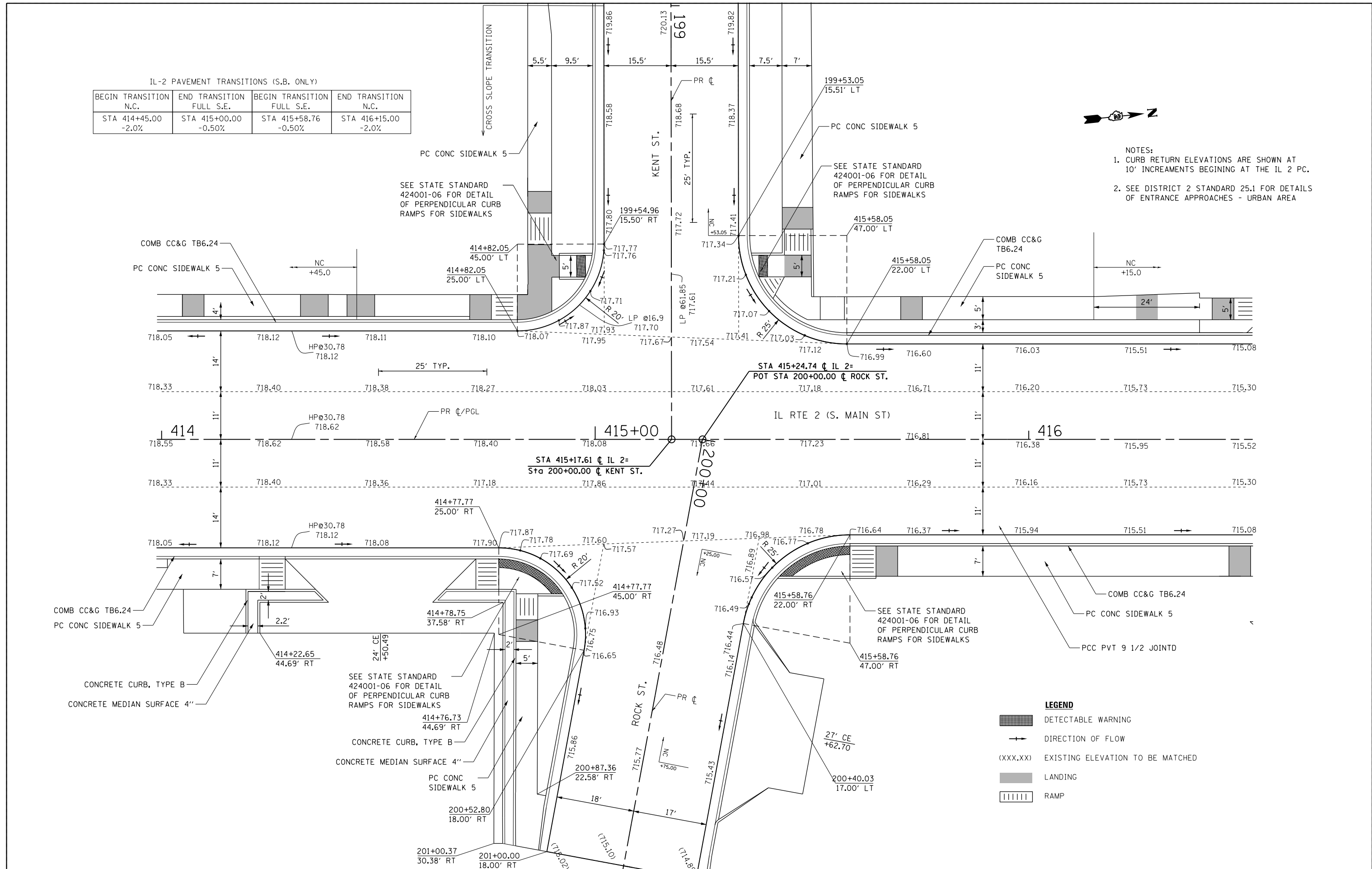


IL-2 PAVEMENT TRANSITIONS (S.B. ONLY)

BEGIN TRANSITION N.C.	END TRANSITION FULL S.E.	BEGIN TRANSITION FULL S.E.	END TRANSITION N.C.
STA 414+45.00 -2.0%	STA 415+00.00 -0.50%	STA 415+58.76 -0.50%	STA 416+15.00 -2.0%



- NOTES:
- CURB RETURN ELEVATIONS ARE SHOWN AT 10' INCREMENTS BEGINNING AT THE IL 2 PC.
  - SEE DISTRICT 2 STANDARD 25.1 FOR DETAILS OF ENTRANCE APPROACHES - URBAN AREA



**LEGEND**

	DETECTABLE WARNING
	DIRECTION OF FLOW
(XXX.XX)	EXISTING ELEVATION TO BE MATCHED
	LANDING
	RAMP

FILE NAME =	USER NAME = #USER*	DESIGNED -	REVISED -
#FILE#		DRAWN -	REVISED -
	PLOT SCALE = #SCALE*	CHECKED -	REVISED -
	PLOT DATE = #DATE*	DATE -	REVISED -

**STATE OF ILLINOIS  
DEPARTMENT OF TRANSPORTATION**

**INTERSECTION DETAIL  
KENT ST./ROCK ST.**

SCALE: 1"=10'    SHEET NO. 21 OF 26 SHEETS    STA.    TO STA.

F.A.P. RTE.	SECTION	COUNTY	TOTAL SHEETS	SHEET NO.
742	(32,33) R-1	WINNEBAGO	705	394
CONTRACT NO. 64821			ILLINOIS FED. AID PROJECT	