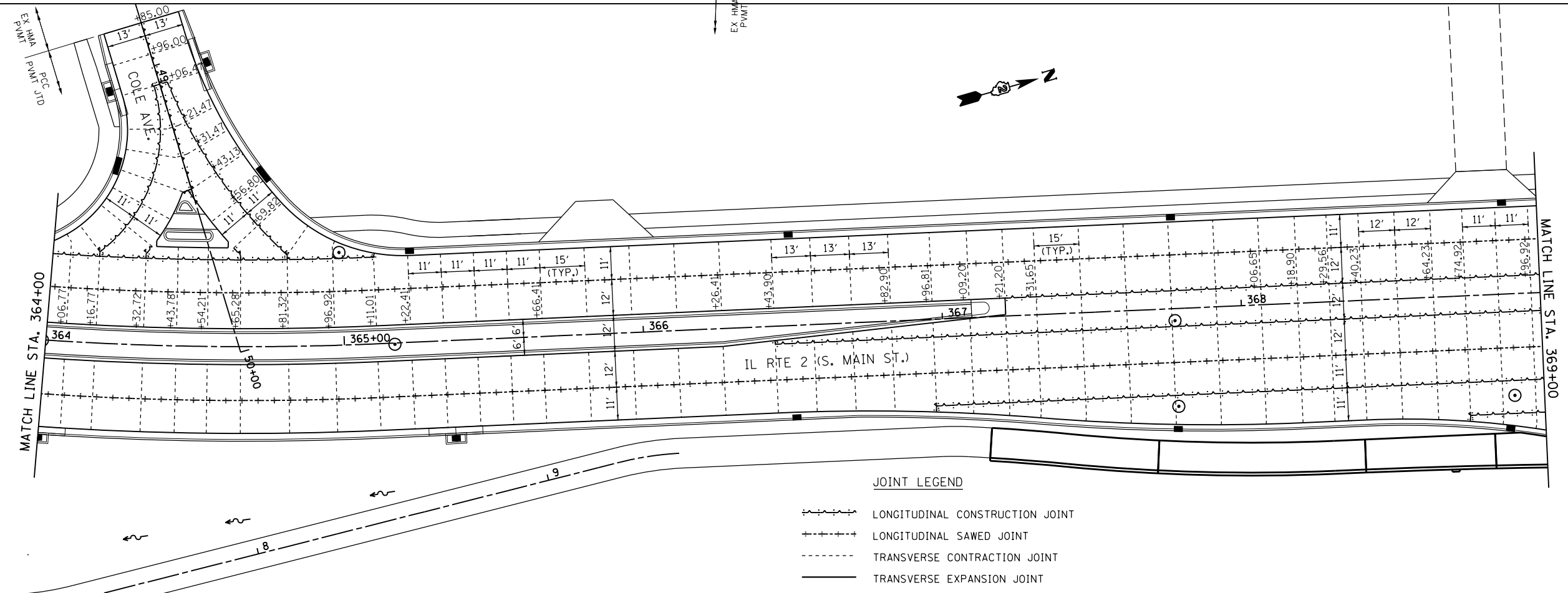


JOINTING NOTES

1. FOR GEOMETRICS SEE ROADWAY PLANS AND INTERSECTION DETAILS.
2. LONGITUDINAL AND TRANSVERSE JOINTS SHALL BE IN ACCORDANCE WITH STANDARD 420001.
3. TWO LANE JOINTED PORTLAND CEMENT CONCRETE PAVEMENT SHALL BE IN ACCORDANCE WITH STANDARD 420101.
4. CONTRACTION JOINT SPACING IS 15', UNLESS NOTED.



JOINT LEGEND

- LONGITUDINAL CONSTRUCTION JOINT
- LONGITUDINAL SAWED JOINT
- TRANSVERSE CONTRACTION JOINT
- TRANSVERSE EXPANSION JOINT

FILE NAME = *FILE#	USER NAME = *USER*	DESIGNED -	REVISED -	STATE OF ILLINOIS DEPARTMENT OF TRANSPORTATION	PAVEMENT JOINT DETAILS IL RTE 2			F.A.P. RTE.	SECTION	COUNTY	TOTAL SHEETS	SHEET NO.
	PLOT SCALE = *SCALE*	DRAWN -	REVISED -		SCALE: 1" = 20'	SHEET NO. 3 OF 14 SHEETS	STA. 358+00 TO STA. 369+00	742	(32,33) R-1	WINNEBAGO	705	402
	PLOT DATE = *DATE*	CHECKED -	REVISED -					CONTRACT NO. 64821				
		DATE -	REVISED -		ILLINOIS FED. AID PROJECT							