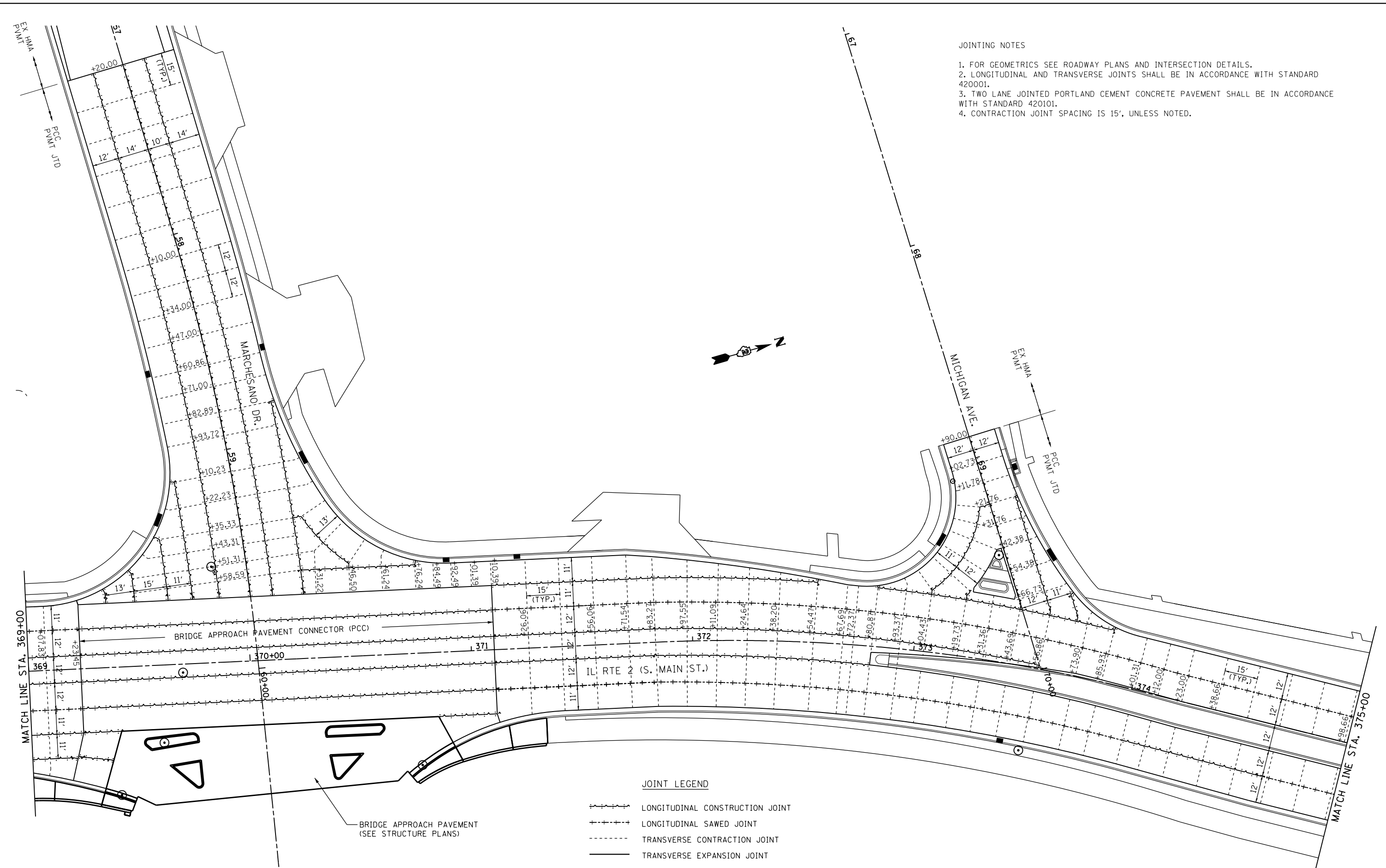


JOINTING NOTES

1. FOR GEOMETRICS SEE ROADWAY PLANS AND INTERSECTION DETAILS.
2. LONGITUDINAL AND TRANSVERSE JOINTS SHALL BE IN ACCORDANCE WITH STANDARD 420001.
3. TWO LANE JOINTED PORTLAND CEMENT CONCRETE PAVEMENT SHALL BE IN ACCORDANCE WITH STANDARD 420101.
4. CONTRACTION JOINT SPACING IS 15', UNLESS NOTED.



JOINT LEGEND

- LONGITUDINAL CONSTRUCTION JOINT
- LONGITUDINAL SAWED JOINT
- TRANSVERSE CONTRACTION JOINT
- TRANSVERSE EXPANSION JOINT

BRIDGE APPROACH PAVEMENT  
(SEE STRUCTURE PLANS)

FILE NAME =  
\*FILE#

USER NAME = \*USER\*

DESIGNED -  
DRAWN -

REVISED -  
REVISED -

PLOT SCALE = \*SCALE\*

CHECKED -  
DATE -

REVISED -  
REVISED -

STATE OF ILLINOIS  
DEPARTMENT OF TRANSPORTATION

PAVEMENT JOINT DETAILS  
IL RTE 2

SCALE: 1" = 20' SHEET NO. 4 OF 14 SHEETS STA. 369+00 TO STA. 375+00

F.A.P. RTE.	SECTION	COUNTY	TOTAL SHEETS	SHEET NO.
742	(32, 33) R-1	WINNEBAGO	705	403
CONTRACT NO. 64821				

ILLINOIS FED. AID PROJECT