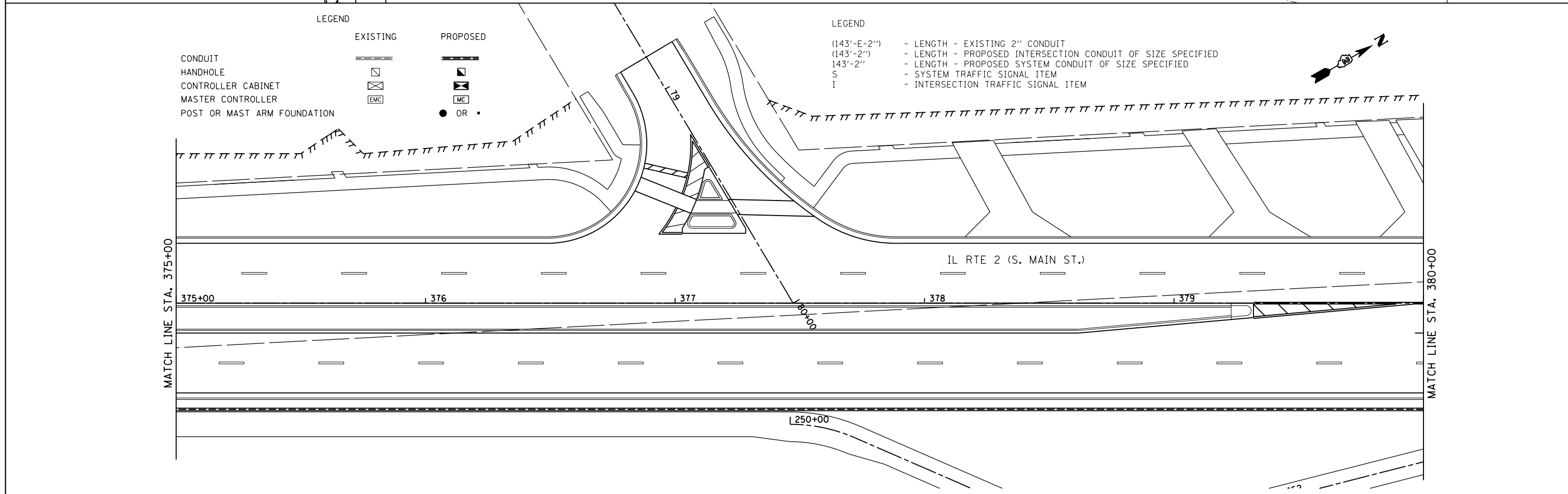


- PROPOSED INTERCONNECT NOTES:
1. THE LOCATION FOR HANDHOLES ARE PROVIDED FOR REFERENCE ONLY. THE LOCATION SHALL BE VERIFIED WITH IDOT'S TRAFFIC OPERATIONS MANAGER AND THE CITY OF ROCKFORD PRIOR TO INSTALLATION.
  2. ALL CONDUIT SHALL BE UNDERGROUND CONDUIT, COILABLE NONMETALLIC CONDUIT, OF THE DIAMETER SPECIFIED, UNLESS OTHERWISE NOTED.
  3. TRACER CABLE AND PULL STRING HAVE BEEN INSTALLED IN CONDUIT CONSTRUCTED IN CONTRACT NO. 64515.
  4. FIBER OPTIC CABLE IN CONDUIT, NO. 62.5/125, 24F SHALL BE INSTALLED IN CONDUITS AS INDICATED IN THE PROPOSED INTERCONNECT SCHEMATIC.
  5. ELECTRIC CABLE IN CONDUIT, TRACER, NO. 14.1C SHALL BE INSTALLED WITH FIBER OPTIC CABLE UNLESS TRACER CABLE IS ALREADY INSTALLED IN CONDUIT.



LEGEND

	EXISTING	PROPOSED
CONDUIT		
HANDHOLE		
CONTROLLER CABINET		
MASTER CONTROLLER		
POST OR MAST ARM FOUNDATION		

LEGEND

(143'-E-2'')	- LENGTH - EXISTING 2" CONDUIT
(143'-2'')	- LENGTH - PROPOSED INTERSECTION CONDUIT OF SIZE SPECIFIED
143'-2''	- LENGTH - PROPOSED SYSTEM CONDUIT OF SIZE SPECIFIED
S	- SYSTEM TRAFFIC SIGNAL ITEM
I	- INTERSECTION TRAFFIC SIGNAL ITEM

FILE NAME =	USER NAME = *USER*	DESIGNED -	REVISED -	<b>STATE OF ILLINOIS DEPARTMENT OF TRANSPORTATION</b>	<b>IL RTE 2 INTERCONNECT PLAN</b>	F.A.P. RTE.	SECTION	COUNTY	TOTAL SHEETS	SHEET NO.	
*FILEL*		DRAWN -	REVISED -			742	(32,33) R-1	WINNEBAGO	705	461	
	PLOT SCALE = *SCALE*	CHECKED -	REVISED -			CONTRACT NO. 64821					
	PLOT DATE = *DATE*	DATE -	REVISED -			ILLINOIS FED. AID PROJECT					
				SCALE: 1" = 20'		SHEET NO. 7 OF 14 SHEETS		STA. 369+00 TO STA. 380+00			