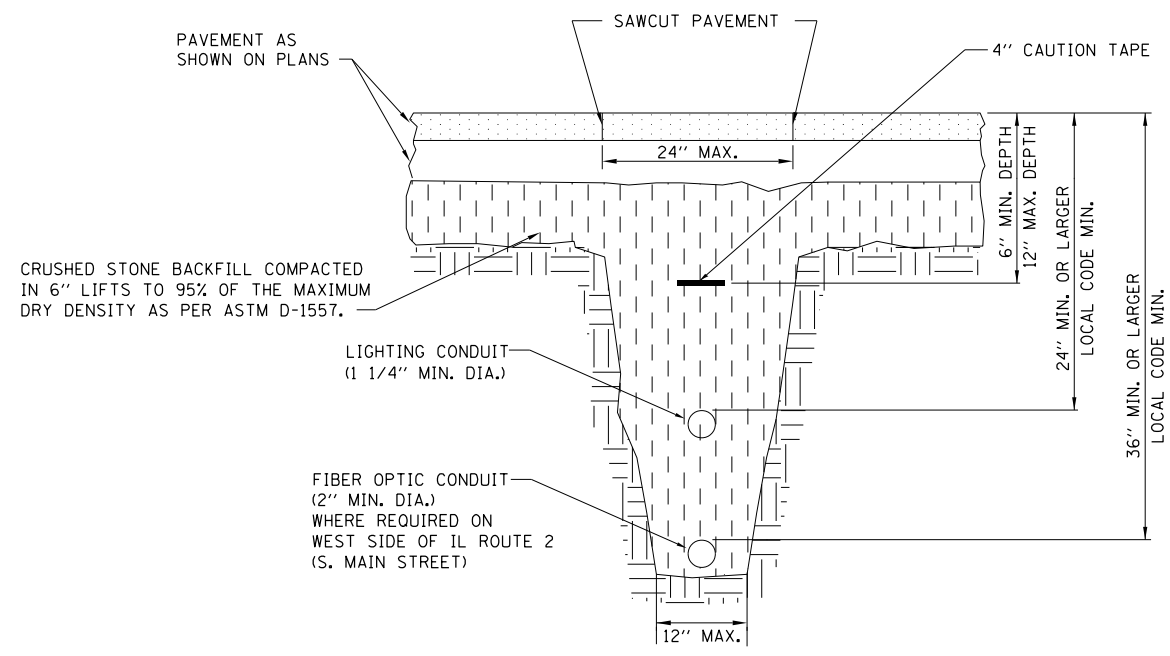
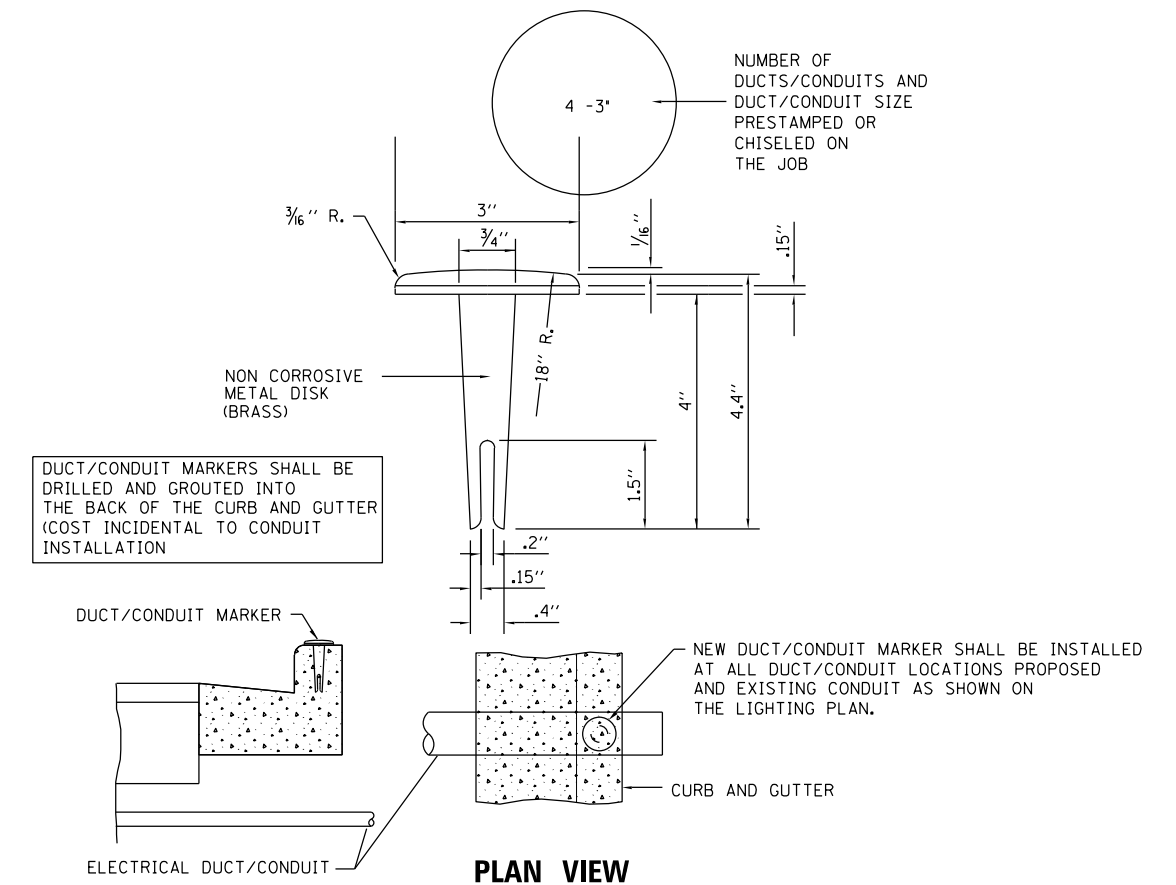


PHOTOCELL MOUNTING DETAIL

NOTE:
PHOTOCELL SHALL BE FACED TOWARDS NORTH.



FIBER OPTICS AND STREET LIGHTING CONDUIT TRENCH



DUCT MARKER DETAIL
NOT TO SCALE

DIRECTORY = L:\ROCKFORD\11804\Draw\CAD\Sheet\0264821.dwg
 USER NAME = Jason Dove

CMT
CRAWFORD, MURPHY & TILLY, INC.
CONSULTING ENGINEERS
License No. 184-000913

MODEL NAME = Default	DESIGNED - JWD	REVISED -
FILE NAME = D264821-sh-light527.dgn	DRAWN - JWD	REVISED -
PLOT SCALE = 40.0018 / in.	CHECKED - AB	REVISED -
PLOT DATE = 11/20/2012 - 11:29:35 AM	DATE - 11/02/2012	REVISED -

STATE OF ILLINOIS
DEPARTMENT OF TRANSPORTATION

ROADWAY LIGHTING DETAIL
CONDUIT TRENCH - DUCT MARKER - PHOTOCELL MOUNTING

SCALE: N/A SHEET 27 OF 32 SHEETS STA. TO STA.

F.A.P. RTE.	SECTION	COUNTY	TOTAL SHEETS	SHEET NO.
742	(32, 33) R-1	WINNEBAGO	705	513
CONTRACT NO. 64821			ILLINOIS FED. AID PROJECT	