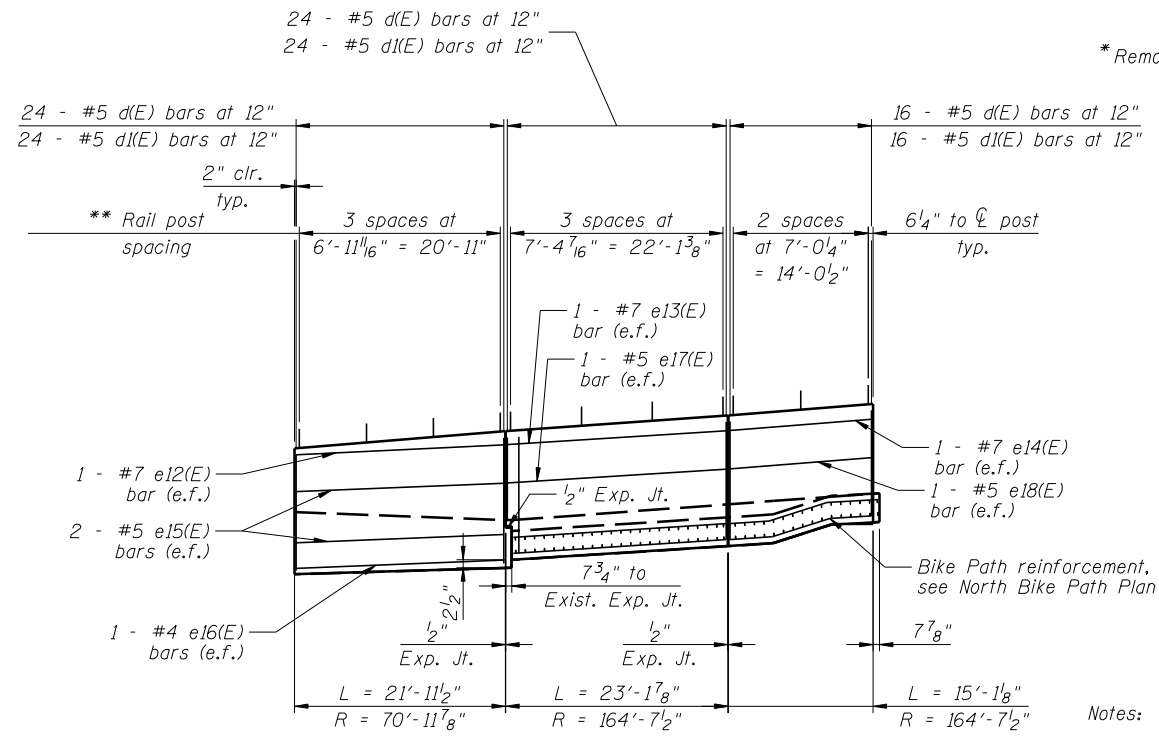


NORTH BIKE PATH PLAN

- ① 28 - #4 c8(E) bars at 12" (f.s.)
28 - #5 c9(E) bars at 12" (b.s.)
See bar cutting diagram
- ② 18 - #4 c10(E) bars at 12" (f.s.)
18 - #5 c11(E) bars at 12" (b.s.)
See bar cutting diagram

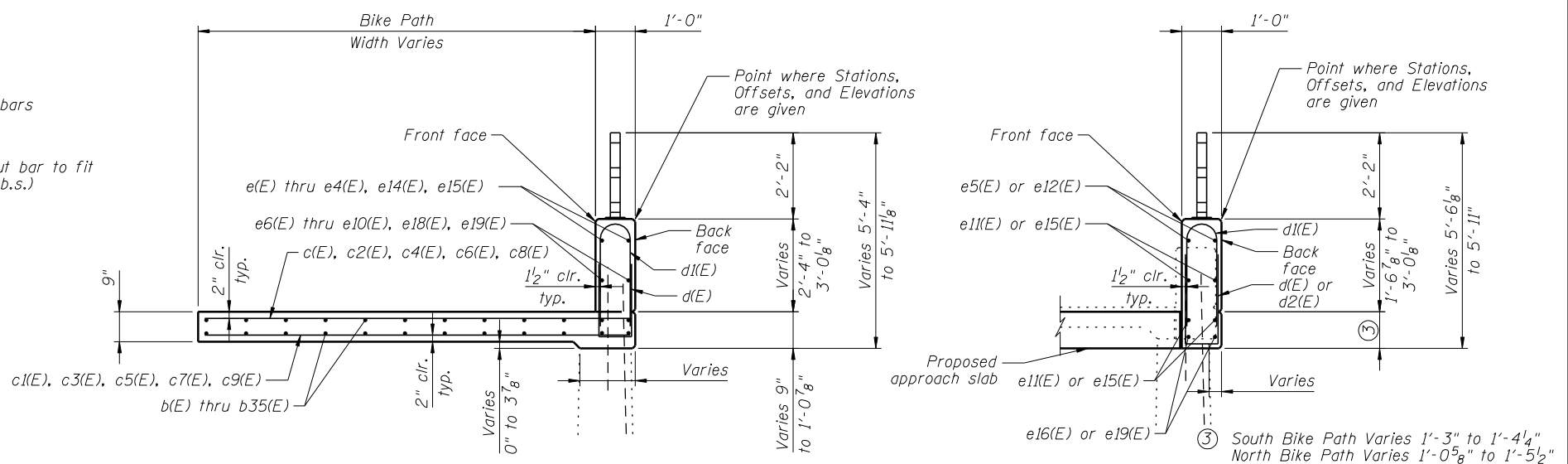


NORTH BIKE PATH ELEVATION

** Contractor to field verify expansion joint locations prior to ordering or fabricating parapet railing.

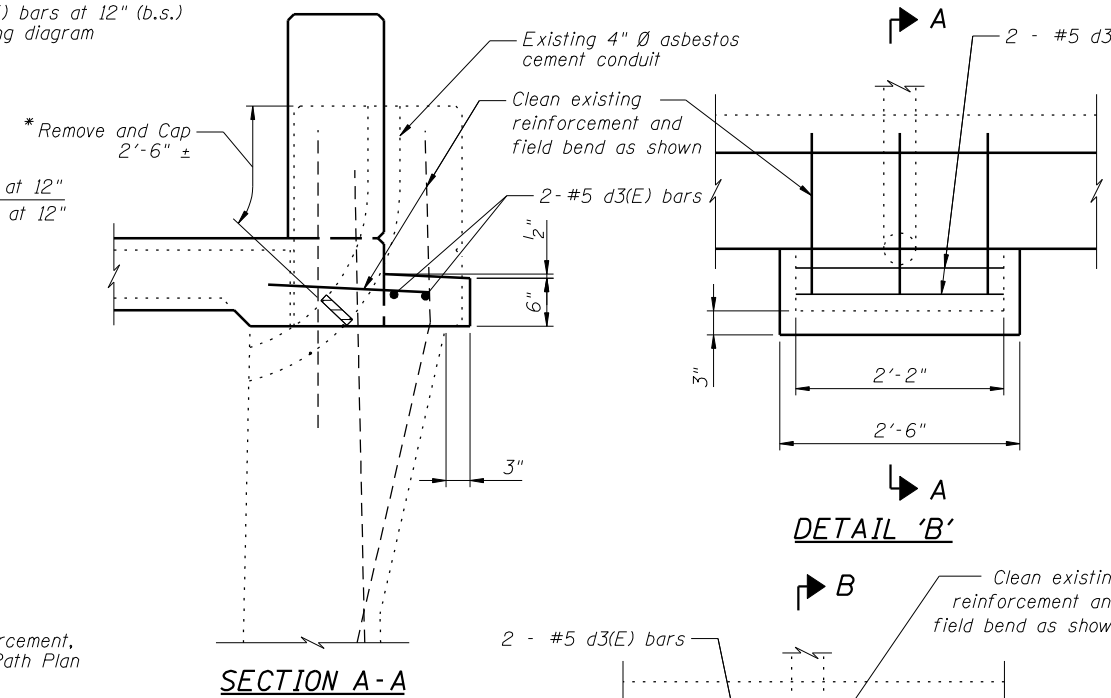
LEGEND

e.f. denotes each face
t.s. denotes top of slab
b.s. denotes bottom of slab



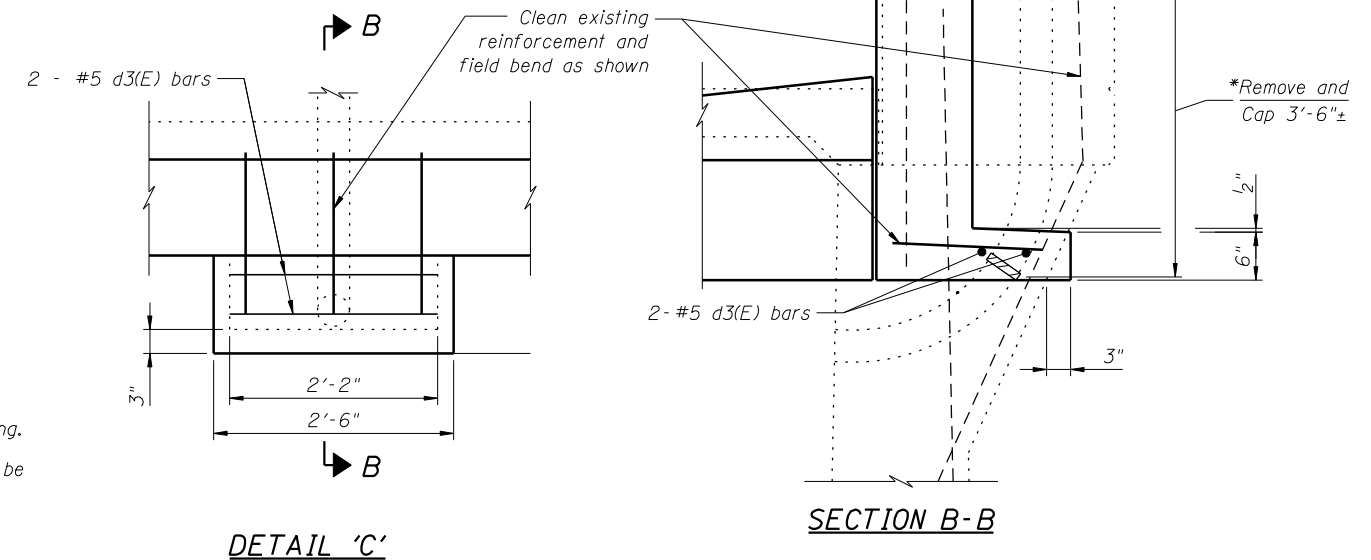
SECTION THROUGH BIKE PATH AND PARAPET

SECTION THROUGH PARAPET WALL AT APPROACH SLAB



SECTION A-A

DETAIL 'A'



DETAIL 'B'

SECTION B-B

Notes:
Dimensions in Elevation view are measured along back face of parapet.
Existing reinforcement shall be cleaned and incorporated into the new construction. Cost included with Concrete Removal.
Location of expansion joints should match existing.
Longitudinal bars in parapet and bike path shall be bent in field to match curvature and maintain clearances.



FILE NAME =	USER NAME =	DESIGNED - DPW	REVISED
		CHECKED - ASP	REVISED
PLOT SCALE =		DRAWN - WSP	REVISED
PLOT DATE =		CHECKED - ASP	REVISED

**STATE OF ILLINOIS
DEPARTMENT OF TRANSPORTATION**

**IL 2 (RT.) BIKE PATH AT 15TH AVENUE
NORTH BIKE PATH PLAN AND ELEVATION**

SHEET NO. 5 OF 18 SHEETS

F.A.P. RTE.	SECTION	COUNTY	TOTAL SHEETS	SHEET NO.
742	(32.33) R-1	WINNEBAGO	705	535
			CONTRACT NO. 64821	
ILLINOIS FED. AID PROJECT				