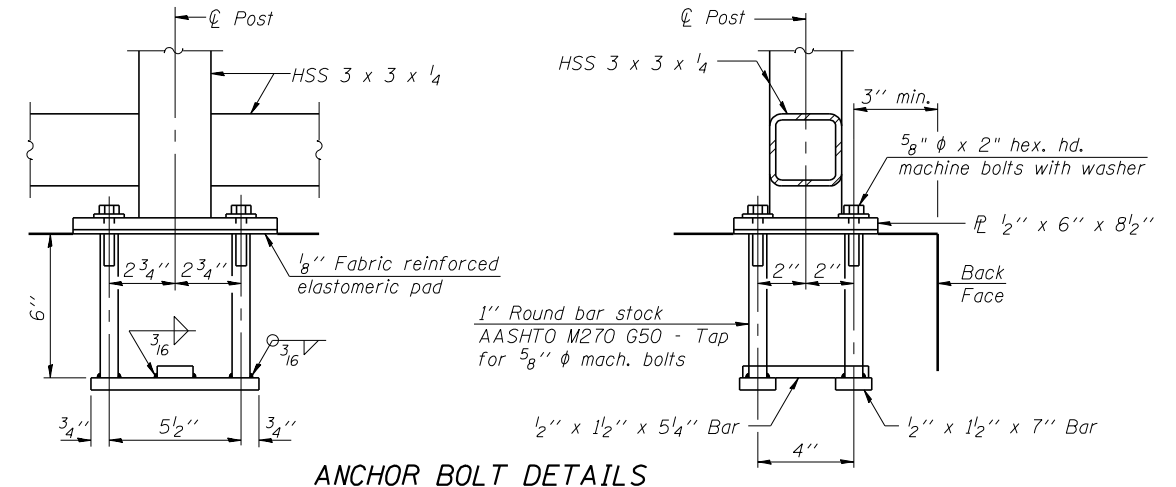
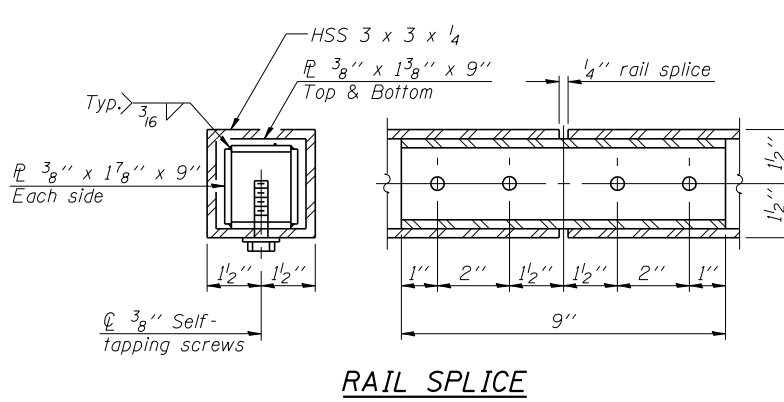
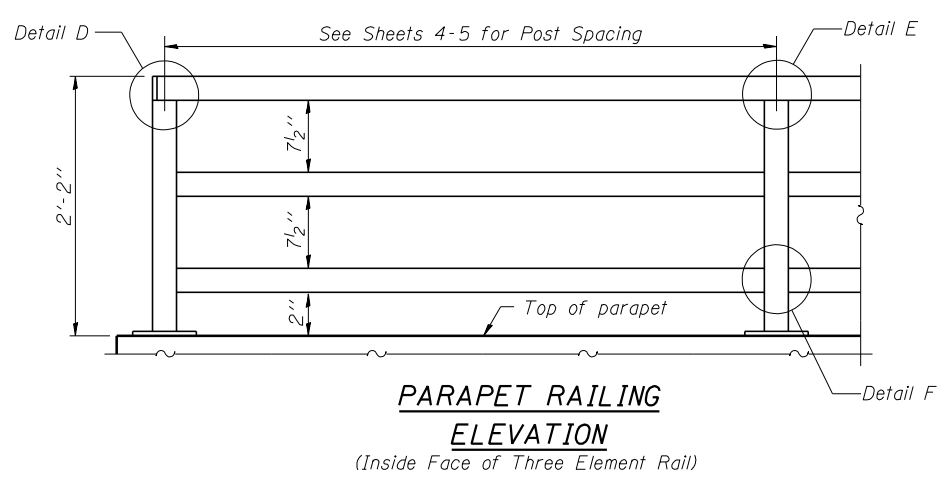
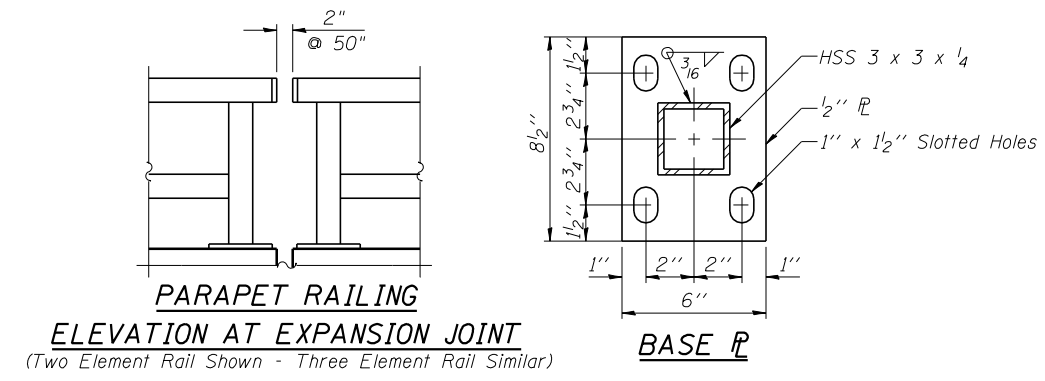


All steel rail elements shall be galvanized according to Article 509.05 of the Standard Specifications.



In lieu of the cast-in-place anchor device shown, the Contractor has the option of drilling and setting 5/8" ϕ anchor rods according to Article 509.06 of the Standard Specifications. Embedment shall be according to the manufacturer's specifications.

R-29

7-1-10 (10'-0" Maximum Post Spacing)



FILE NAME =	USER NAME =	DESIGNED - ASP	REVISED
		CHECKED - WSP	REVISED
		DRAWN - LNB	REVISED
		CHECKED - ASP	REVISED

STATE OF ILLINOIS
DEPARTMENT OF TRANSPORTATION

IL 2 (RT.) BIKE PATH AT 15TH AVENUE
PARAPET RAILING DETAILS

SHEET NO. 7 OF 18 SHEETS

F.A.P. RTE.	SECTION	COUNTY	TOTAL SHEETS	SHEET NO.
742	(32.33) R-1	WINNEBAGO	705	537
			CONTRACT NO. 64821	

ILLINOIS FED. AID PROJECT