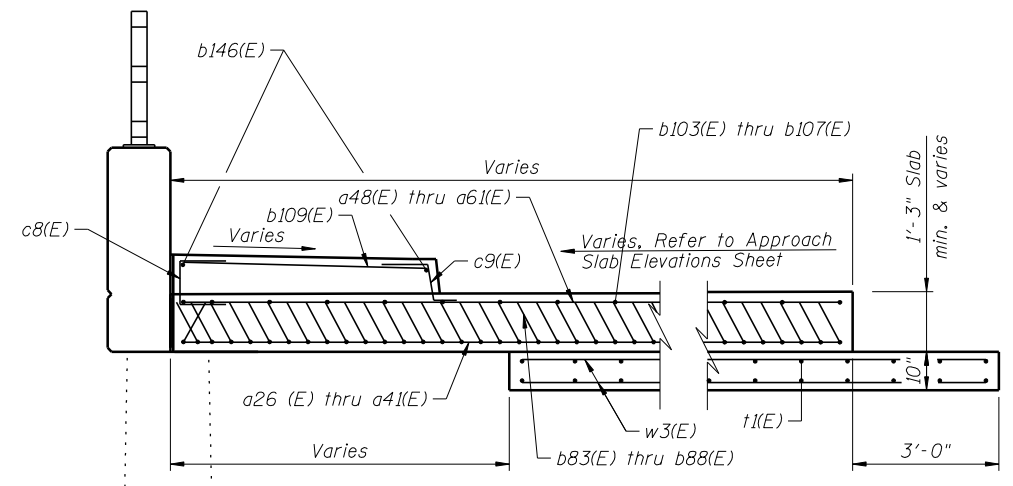
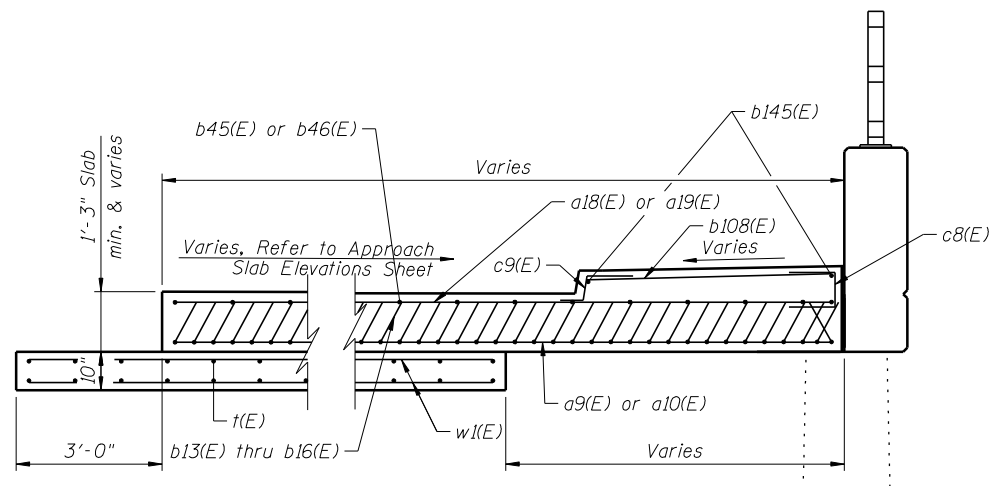
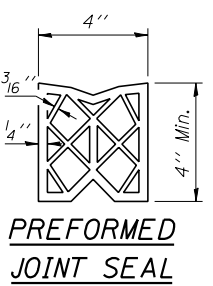
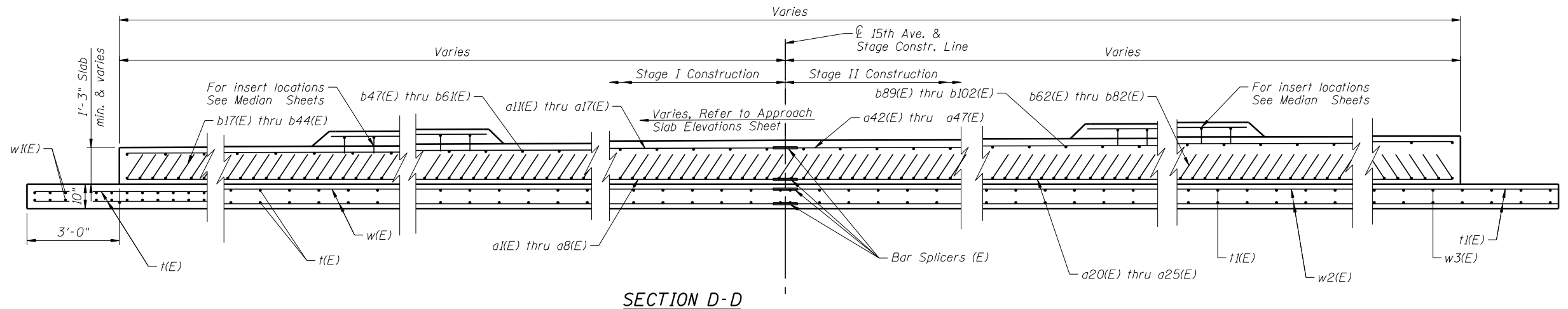
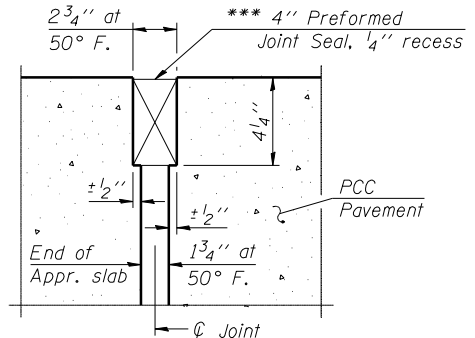


For #5 v(E) bars, drill 3/4" Dia. hole and epoxy grout a minimum of 6" into existing pavement ledge to develop a pullout strength of 9.2 kips.

- \* Tilt #9 b17(E) thru b44(E) and b62(E) thru b82(E) bars as required to maintain clearance.
- \*\*\* Cost included with Concrete Superstructure.



FILE NAME =	USER NAME =	DESIGNED - DPW	REVISED
		CHECKED - ASP	REVISED
		DRAWN - WSP	REVISED
		CHECKED - ASP	REVISED

STATE OF ILLINOIS  
DEPARTMENT OF TRANSPORTATION

IL 2 (RT.) BIKE PATH AT 15TH AVENUE  
APPROACH SLAB DETAILS

SHEET NO. 15 OF 18 SHEETS

F.A.P. RTE.	SECTION	COUNTY	TOTAL SHEETS	SHEET NO.
742	(32.33) R-1	WINNEBAGO	705	545
CONTRACT NO. 64821				

ILLINOIS FED. AID PROJECT