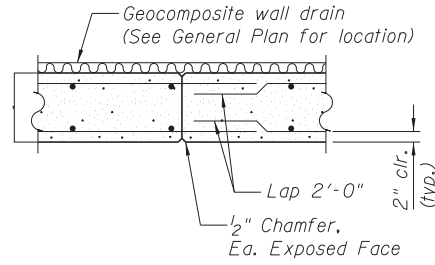
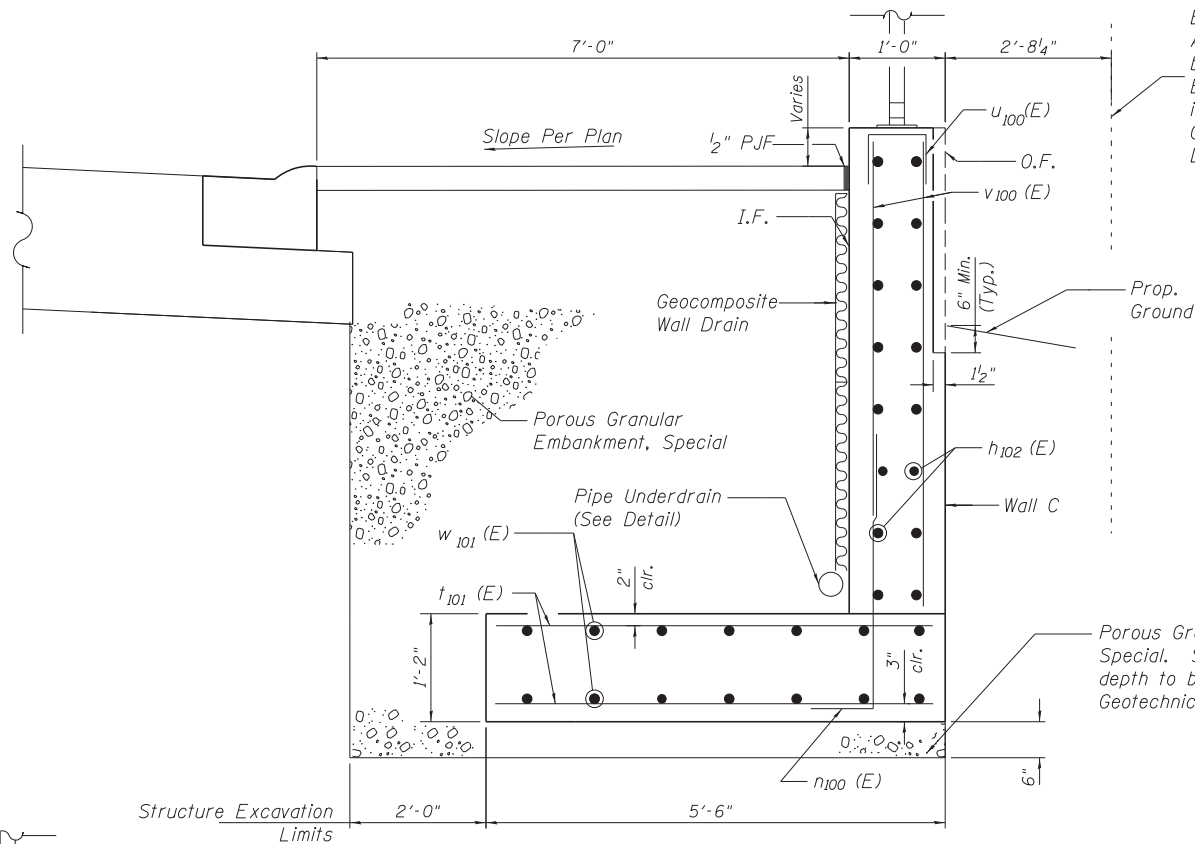


EXPANSION JOINT
Cost included with Concrete Structures



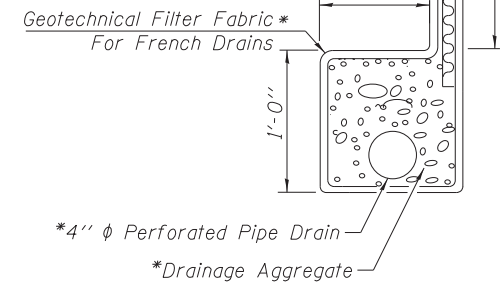
CONSTRUCTION JOINT
Cost included with Concrete Structures



SECTION A-A

- Notes:
- Form Liner Pattern Shall Conform to Random Block Ashlar Stone Pattern Stone Sizes 6" to 42" wide Max Relief = 1 1/2"
 - Spec Formliners Pattern No. 1506, or Milestones Pattern No. 1019, or Equal.
 - Form Liner Pattern Shall Be Supplied and Constructed Per Article 503.06 of The IDOT Standard Specification For Road and Bridge Construction. Apply to All Faces of Walls Exposed Above Final Grade. Form Liner costs are included in Concrete Structures.
 - Clear Cover Shall be Measured From Relief, Not Thickest Portion of Concrete.
 - Reinforcement Bars Designated (E) Shall be Epoxy Coated.
 - Foundations are designed for an ultimate allowable soil bearing pressure of 2 ksf. Contractor shall have soil conditions confirmed by a qualified Geotechnical Engineer licensed in the State of Illinois.

Exist. Property Boundary. Adjacent Property shall not be disturbed. Temporary Earth Retention System, if required, is the responsibility of the Contractor (See Building Demolition Plans).

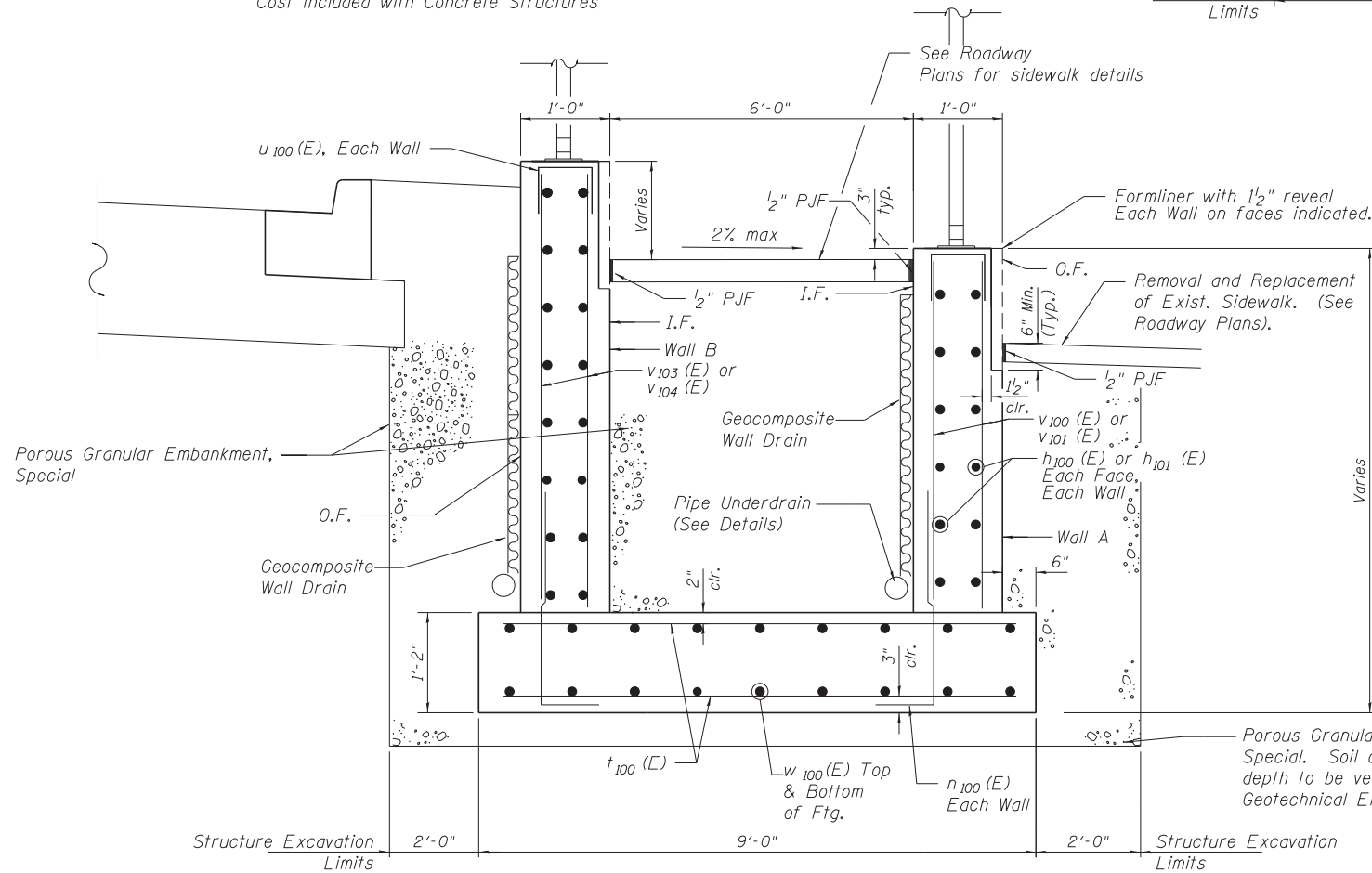


PIPE UNDERDRAIN DETAIL
* Included in the cost of Pipe Underdrains for Structures.

BILL OF MATERIALS

Bar	No.	Size	Length	Shape
h ₁₀₀ (E)	46	#4	30'-1"	—
h ₁₀₁ (E)	8	#4	8'-1"	—
h ₁₀₂ (E)	12	#4	31'-1"	—
h ₁₀₃ (E)	10	#4	6'-8"	—
h ₁₀₄ (E)	10	#4	6'-8"	—
h ₁₀₀ (E)	164	#4	4'-4"	J
h ₁₀₁ (E)	8	#4	5'-8"	J
t ₁₀₀ (E)	140	#5	8'-6"	—
t ₁₀₁ (E)	66	#5	5'-0"	—
u ₁₀₀ (E)	52	#4	2'-2"	□
v ₁₀₀ (E)	120	#4	5'-4"	—
v ₁₀₁ (E)	60	#4	4'-6"	—
v ₁₀₂ (E)	18	#4	3'-6"	—
v ₁₀₃ (E)	60	#4	5'-1"	—
v ₁₀₄ (E)	16	#4	4'-2"	—
v ₁₀₅ (E)	8	#4	3'-11"	—
w ₁₀₀ (E)	54	#4	25'-9"	—
w ₁₀₁ (E)	12	#4	5'-0"	—

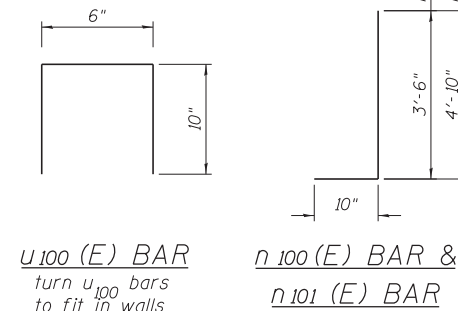
CODE NO.	DESCRIPTION	UNIT	QUANTITY
50200100	Structure Excavation	Cu. Yd.	135
50300225	Concrete Structures	Cu. Yd.	64.2
50800205	Reinforcement Bars Epoxy Coated	Pound	5,360
59100100	Geocomposite Wall Drain	Sq. Yd.	80
X2070304	Porous Granular Embankment, Special	Cu. Yd.	170
Z0046304	Pipe Underdrain For Structures, 4"	Foot	190



SECTION B-B

MINIMUM BAR LAP

- #4 bar = 2'-4"
- #5 bar = 2'-7"



HRGreen.com
Illinois Professional Design Firm
#184-001322

USER NAME	DESIGNED	REVISIONS
JMW	JMW	-
	JMW	-
	DFM	-
		-

STATE OF ILLINOIS
DEPARTMENT OF TRANSPORTATION

WALL AND FOUNDATION DETAILS

SHEET S-3 OF S-4 SHEETS STA. TO STA.

F.A. RTE.	SECTION	COUNTY	TOTAL SHEETS	SHEET NO.
742	(32,33) R-1	WINNEBAGO	705	563
			CONTRACT NO. 64821	
ILLINOIS FED. AID PROJECT				