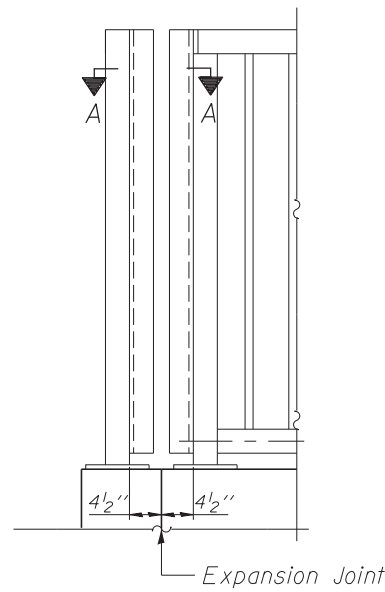
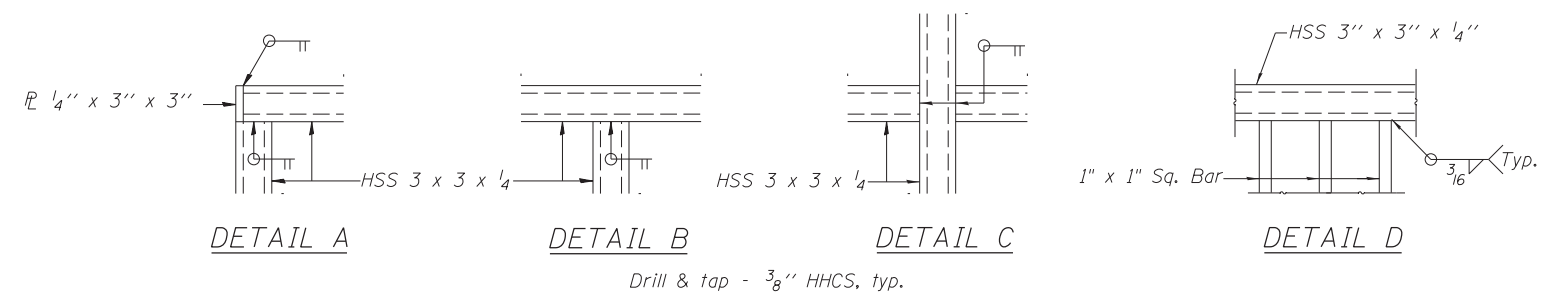


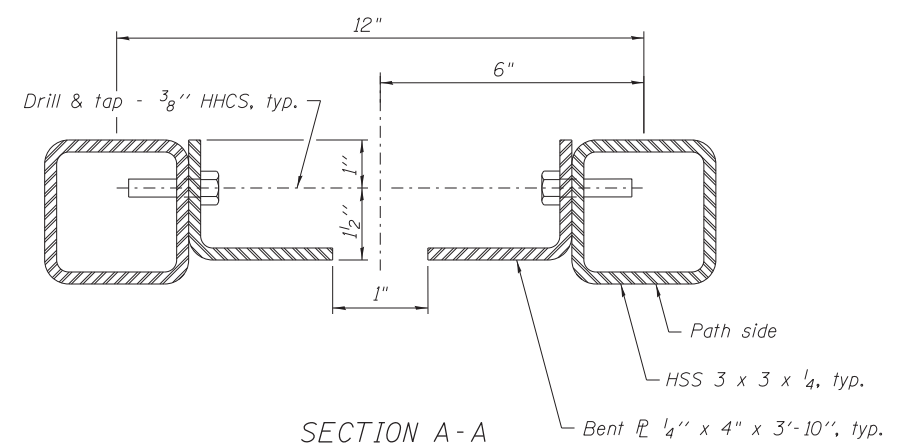
PEDESTRIAN RAILING



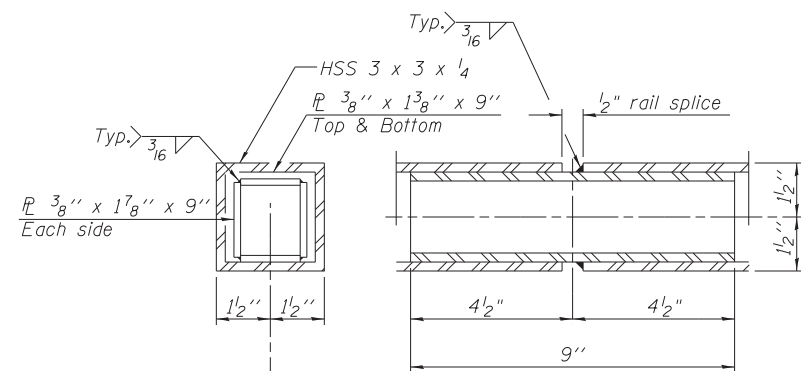
PEDESTRIAN RAILING  
Southeast & Northwest Corners



**NOTES**  
All post, railing, pickets, splices, and anchor devices shall be powder coated black. The powder coating system to be used shall be approved by the engineer prior to the coating process. The powder coating shall be paid for as Painting Steel Railing. See the Special Provision for the powder coating system to be used.

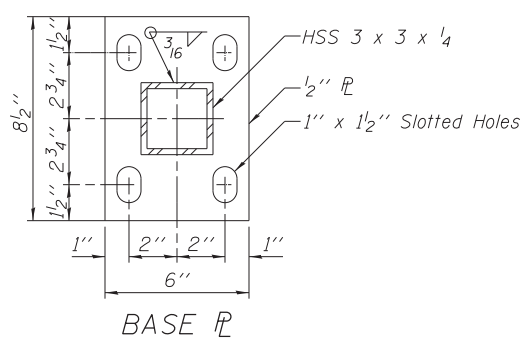


SECTION A-A

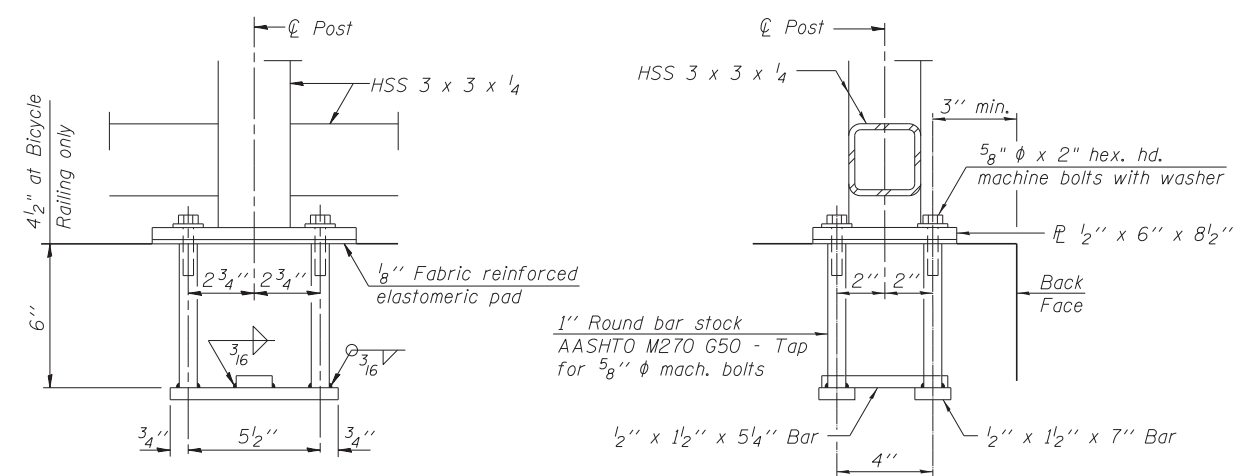


RAIL SPLICE

Rail Splice Spacing = 35'-0" Maximum.



BASE PLATE



ANCHOR BOLT DETAILS

In lieu of the cast-in-place anchor device shown, the Contractor has the option of drilling and setting 5/8"  $\phi$  anchor rods according to Article 509.06 of the Standard Specifications. Embedment shall be according to the manufacturer's specifications, but no greater than 6".

**BILL OF MATERIAL**

Code No.	Item	Unit	Quantity
50900805	Pedestrian Railing	Foot	159.2
50600200	Painting Steel Railing	Foot	159.2

USER NAME = JMW	DESIGNED - JMW	REVISED -
PLOT SCALE =	DRAWN - JMW	REVISED -
PLOT DATE =	CHECKED - DFM	REVISED -
	DATE - 9/28/12	REVISED -

F.A. RTE.	SECTION	COUNTY	TOTAL SHEETS	SHEET NO.
742	(32,33) R-1	WINNEBAGO	705	564
			CONTRACT NO. 64821	
ILLINOIS FED. AID PROJECT				