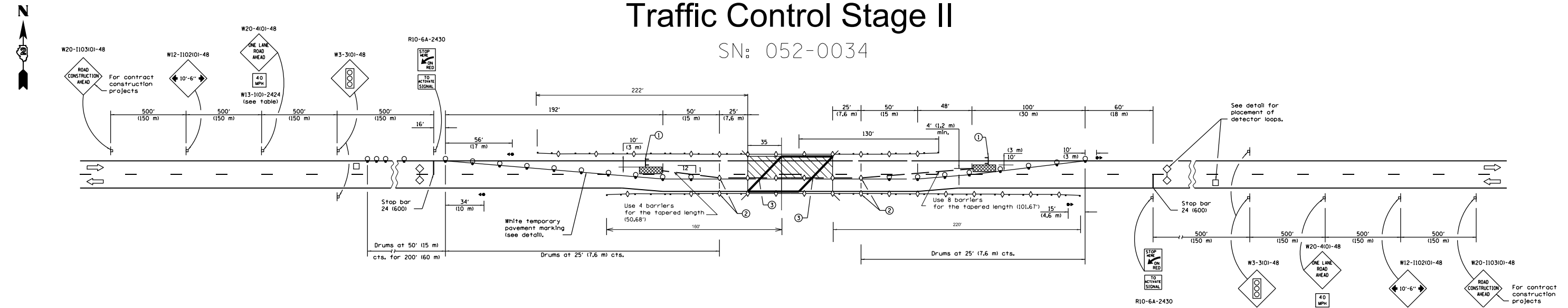
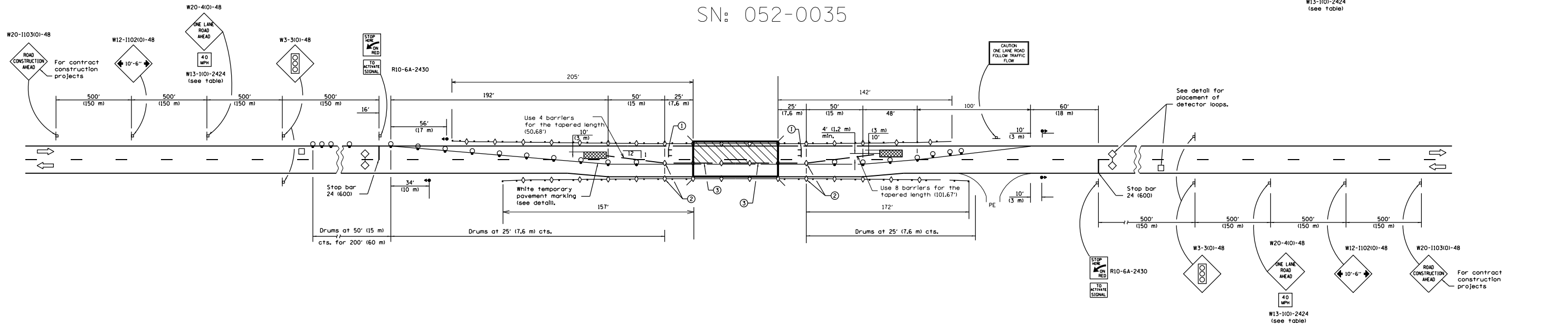


Traffic Control Stage II

SN: 052-0034



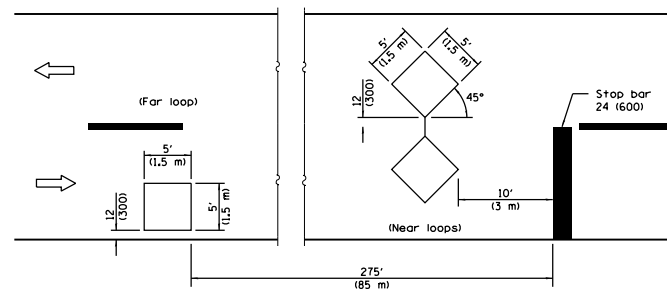
SN: 052-0035



NOTES:

- SYMBOLS**
- Work area
 - Drum with steady burning bi-directional light
 - Temporary concrete barrier
 - Sign
 - Temporary rumble strip (when specified)
 - Type III barricade
 - Double vertical panel (see detail)
 - Traffic signal
 - Crystal, bi-directional barrier wall/guardrail marker
 - Detector loops
 - Impact attenuator

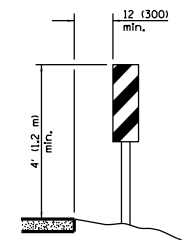
- ① Type III barricade to be placed when no work is being performed. Traffic signals shall be operational only when all traffic controls are in place. When traffic signals are not in operation, flaggers shall be used and traffic control shall conform to Standard 701201 or 701206.
- ② Barrier wall/guardrail markers at 25' (7.6 m) cts. See Standards 704001 & 635011. Temporary concrete barrier shall be according to Standard 704001.
- ③ When temp. bridge rail is specified, it shall be connected to the temp. conc. barrier using a traffic barrier terminal Type II. Existing or temporary pavement markings shall be on both sides of open lane from stop bar to stop bar.



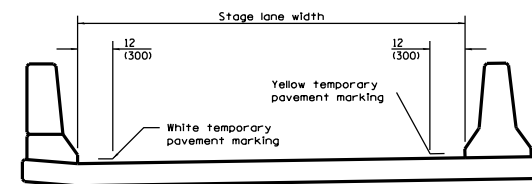
DETECTOR LOOPS DETAIL

TRAFFIC SIGNAL SEQUENCE						
PHASE	A	B				
INTERVAL	1	2	3	4	5	6
NORTHBOUND OR EASTBOUND	G	Y	R	R	R	R
SOUTHBOUND OR WESTBOUND	R	R	R	G	Y	R

ADVISORY SPEED LIMIT	
NORMAL POSTED SPEED	ADVISORY SPEED
55 - 45 mph	40 mph
40 mph	35 mph
35 - 30 mph	30 mph



VERTICAL PANELS
(Post mounted, one each side)



TEMPORARY PAVEMENT MARKING DETAIL