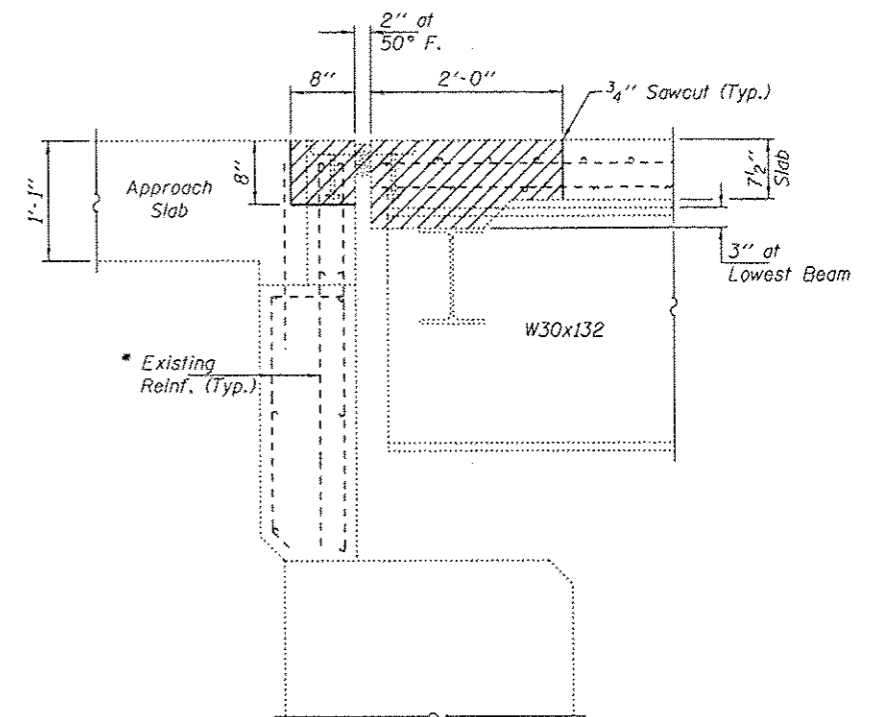


CONCRETE REMOVAL PLAN
 East Abutment shown, West
 Abutment similar by 180° rotation



SECTION A-A
 Dimensions at Rt. L's

* Existing reinforcement extending into the removal area shall be cleaned, straightened and incorporated into the new construction. Any reinforcement bars that are damaged during concrete removal shall be replaced with an approved bar splicer or anchorage system. Cost shall be included with Concrete Removal.

DESIGNED - ADY	EXAMINED	DATE - JANUARY 28, 2013	STATE OF ILLINOIS DEPARTMENT OF TRANSPORTATION	CONCRETE REMOVAL DETAILS SN 052-0034	F.A. RTE.	SECTION	COUNTY	TOTAL SHEETS	SHEET NO.
CHECKED - ARS	<i>Timothy A. Stoffen</i> ACTING ENGINEER OF STRUCTURAL SERVICES				573	02 DECK REPAIR 2013-2	LEE	22	12
DRAWN - Kyle M. Stoffen	PASSED				CONTRACT NO. 64H74				
CHECKED - ADY ARS	<i>Carl King</i> ACTING ENGINEER OF BRIDGES AND STRUCTURES			SHEET NO. 2 OF 6 SHEETS	ILLINOIS FED. AID PROJECT				