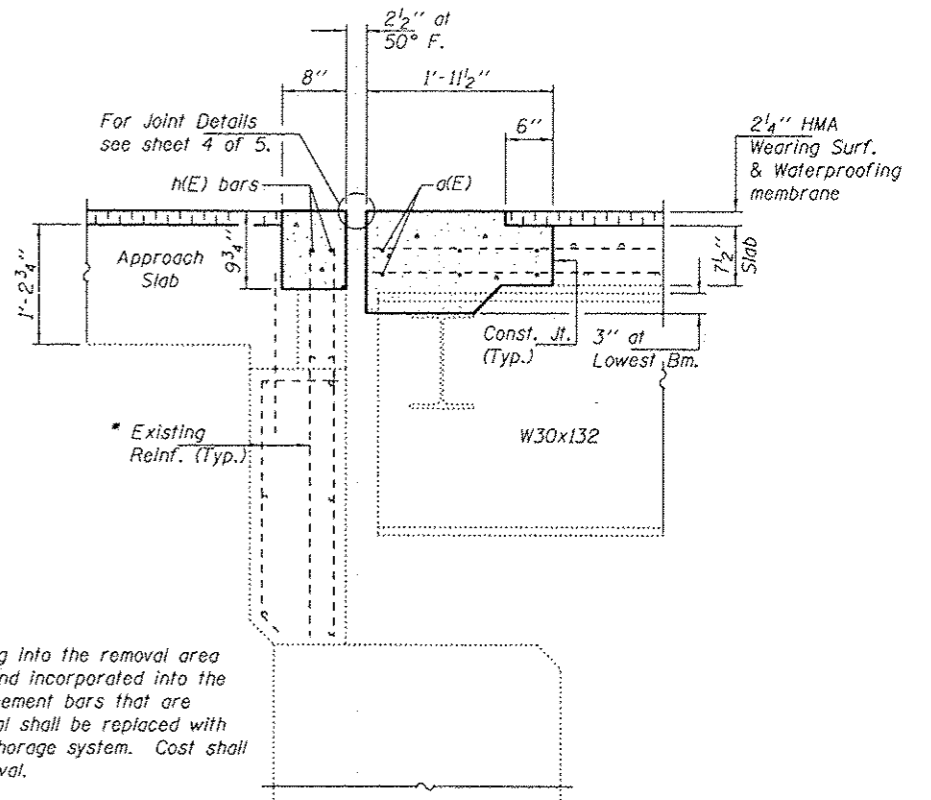


**CONCRETE REMOVAL PLAN**

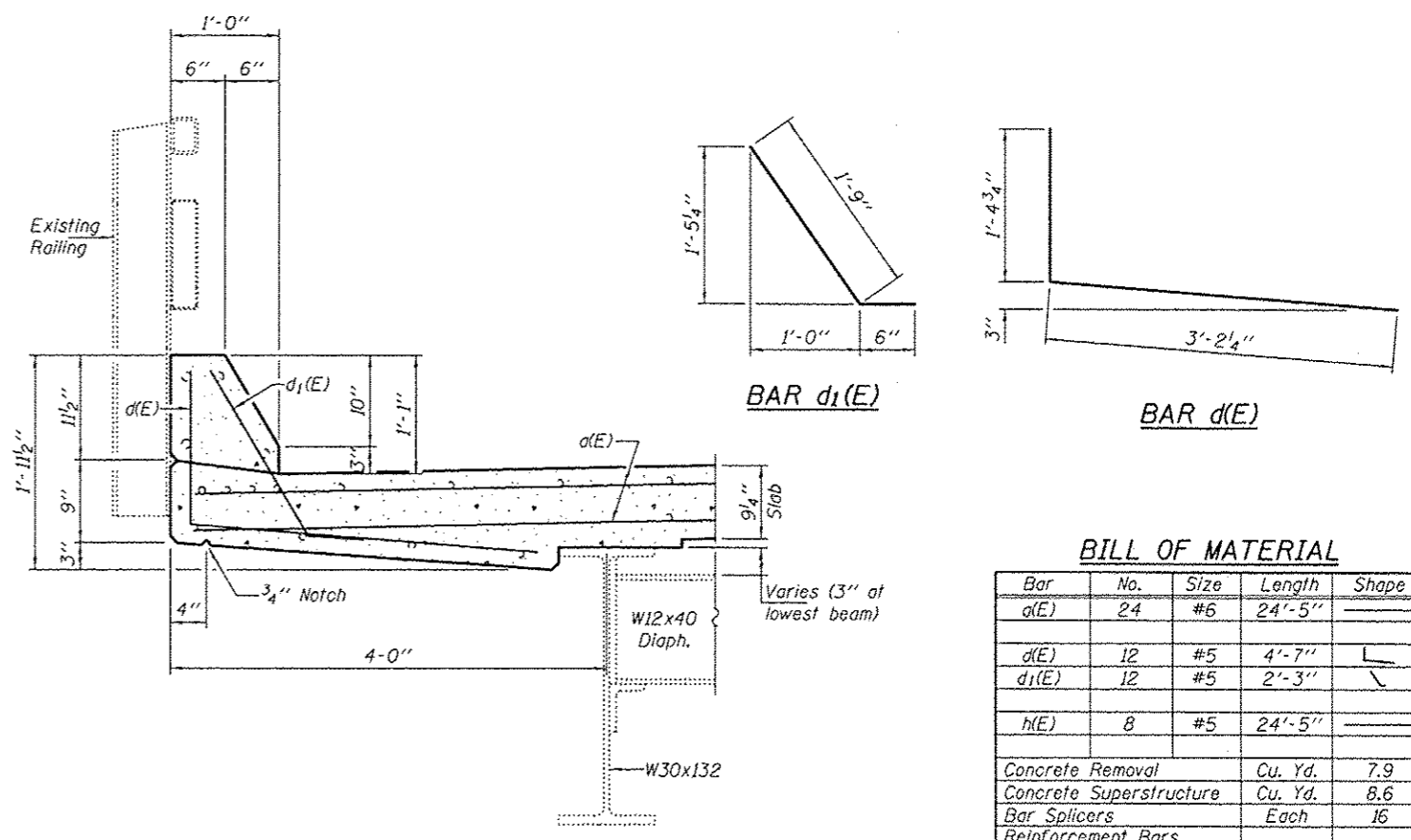
East Abutment shown, West Abutment similar by 180° rotation



**SECTION B-B**

Dimensions at Rt. L's

\* Existing reinforcement extending into the removal area shall be cleaned, straightened and incorporated into the new construction. Any reinforcement bars that are damaged during concrete removal shall be replaced with an approved bar splicer or anchorage system. Cost shall be included with Concrete Removal.



**TYPICAL SECTION THRU PARAPET**

**BILL OF MATERIAL**

Bar	No.	Size	Length	Shape
d(E)	24	#6	24'-5"	—
d(E)	12	#5	4'-7"	L
d1(E)	12	#5	2'-3"	∟
h(E)	8	#5	24'-5"	—
Concrete Removal			Cu. Yd.	7.9
Concrete Superstructure			Cu. Yd.	8.6
Bar Splicers			Each	16
Reinforcement Bars, Epoxy Coated			Pound	1170

DESIGNED - ADY	EXAMINED - <i>Timothy A. D. Goff</i>	DATE - JANUARY 28, 2013
CHECKED - ARS	ACTING ENGINEER OF STRUCTURAL SERVICES	
DRAWN - Kyle M. Steffen	PASSED - <i>Carl Long</i>	
CHECKED - ADY ARS	ACTING ENGINEER OF BRIDGES AND STRUCTURES	

STATE OF ILLINOIS  
DEPARTMENT OF TRANSPORTATION

CONCRETE REPLACEMENT DETAILS  
SN 052-0034

SHEET NO. 3 OF 6 SHEETS

F.A. RTE.	SECTION	COUNTY	TOTAL SHEETS	SHEET NO.
573	D2 DECK REPAIR 2013-2	LEE	22	13
CONTRACT NO. 64H74				
ILLINOIS FED. AID PROJECT				