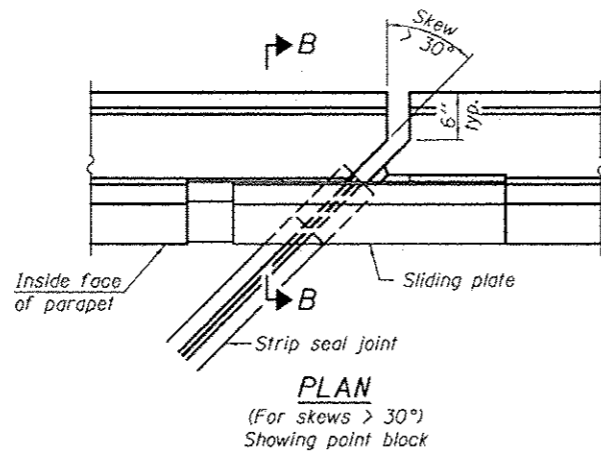
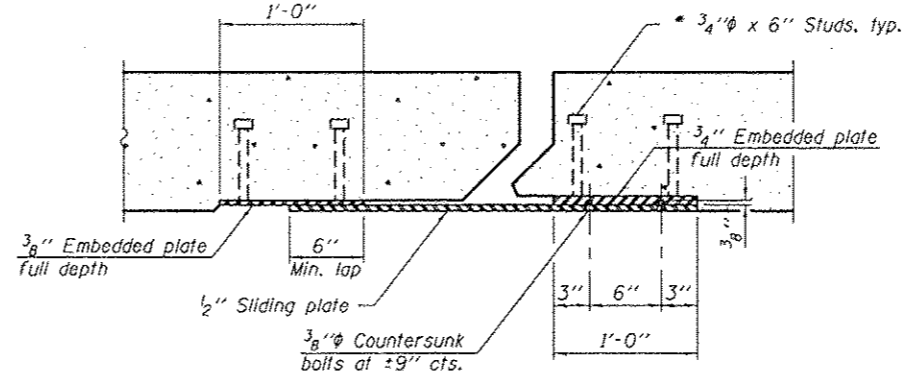


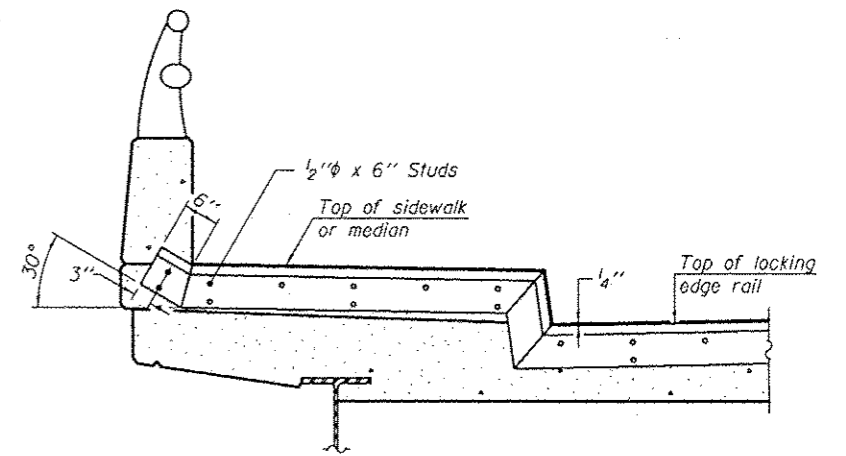
**PLAN**  
(For skews  $\leq 30^\circ$ )



**PLAN**  
(For skews  $> 30^\circ$ )  
Showing point block

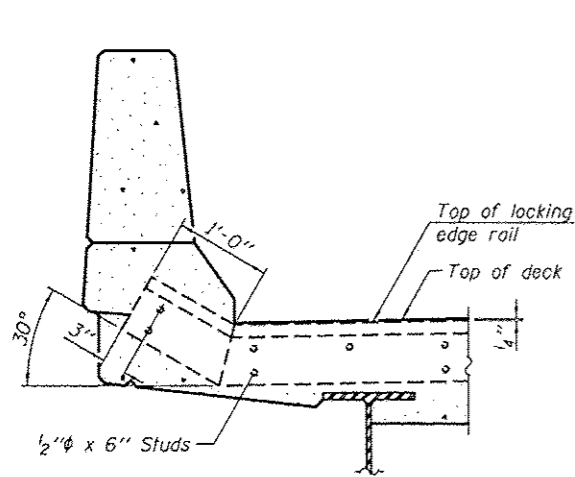


**SECTION C-C**

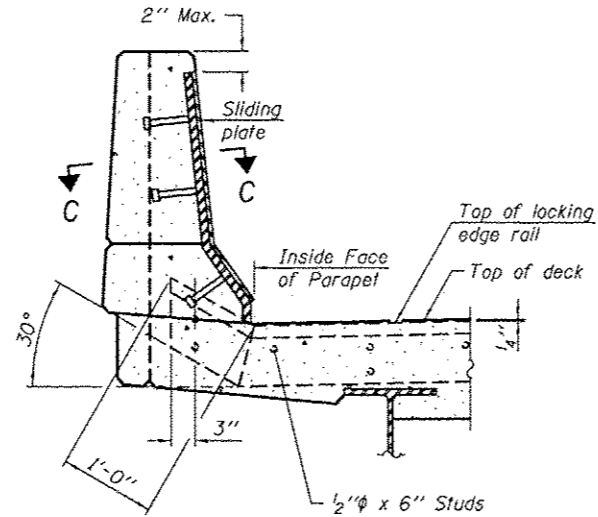


**TYPICAL END TREATMENT  
AT SIDEWALK OR MEDIAN**

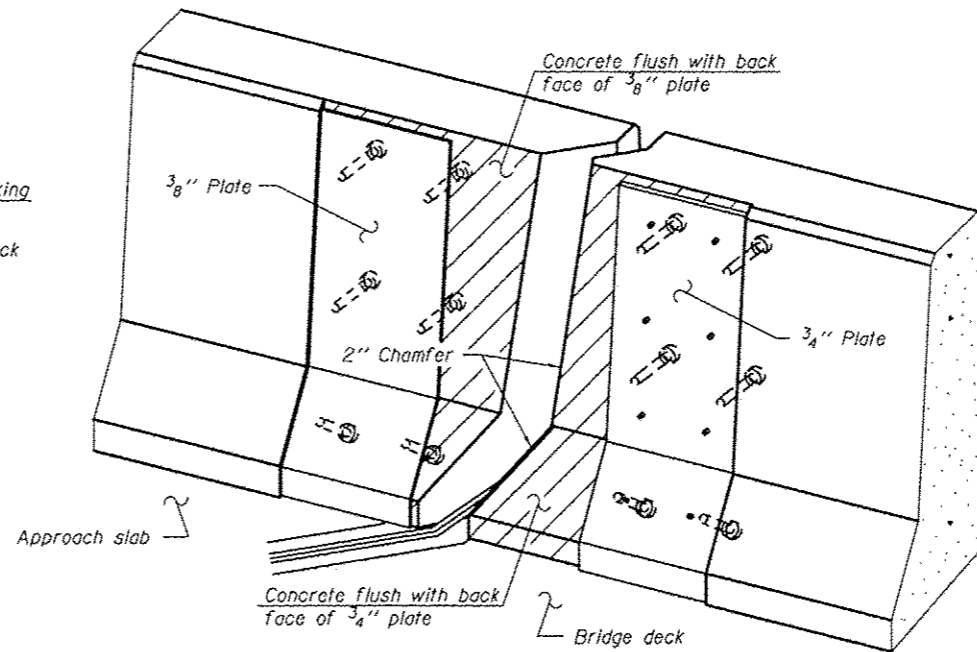
Shorter plates with a single row of studs at 12" cts. may be necessary on medians which are shallower than 9". See manufacturer's recommendation.



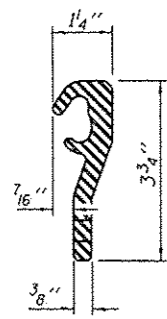
**SECTION A-A**



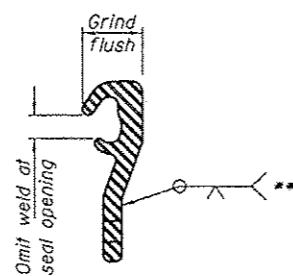
**SECTION B-B**



**TRIMETRIC VIEW**  
(Showing back plates only)

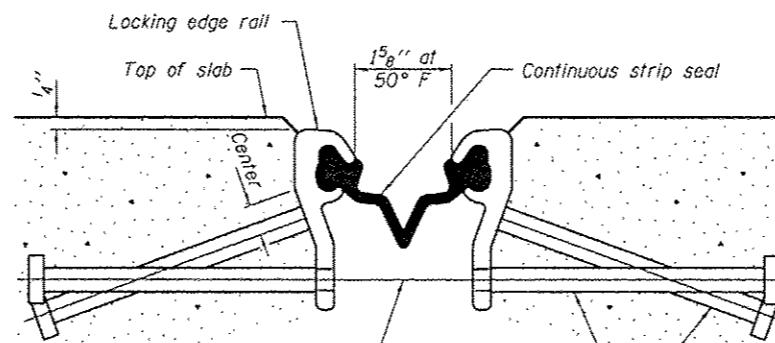


**LOCKING EDGE RAIL**



**LOCKING EDGE RAIL SPLICE**

\*\* Back gouge not required if complete joint penetration is verified by mock-up.



**SECTION THRU SHALLOW STRIP SEAL JOINT**

\* Granular or solid flux filled headed studs conforming to Article 1006.32 of the Std. Specs., automatically end welded.

1/16" holes at 4'-0" cts. for 3/8" bolts. All bolts shall be burned, sawed, or chipped off flush with the plates after forms are removed, typ.

Place 1/2" x 6" granular or solid flux filled headed studs conforming to Article 1006.32 of the Std. Specs., automatically end welded at 1'-0" alt. cts.

**Notes:**

The strip seal shall be made continuous and shall have a minimum thickness of 1/4". The configuration of the strip seal shall match the configuration of the Locking Edge Rails. Open or "webbed" strip seal gland configurations are not permitted. The gland shall be sized for a maximum rated movement of 4 inches.

The Locking Edge Rails depicted are conceptual only, except for the minimum dimensions shown. The actual configuration of the Locking Edge Rails and matching strip seal may vary from manufacturer to manufacturer. Flanged edge rails will not be allowed. Locking Edge Rails may be spliced at slope discontinuities and stage construction joints. The manufacturer's recommended installation methods shall be followed.

All steel components shall be galvanized after fabrication according to Article 520.03 of the Standard Specifications.

Maximum space between rail segments at stage lines shall be 3/16", sealed with a suitable sealant.

Parapet plates and anchorage studs for skews > 30° included in the cost of Preformed Joint Strip Seal.

The inside of the Locking Edge Rail groove shall be free of weld residue.

**BILL OF MATERIAL**

Item	Unit	Total
Preformed Joint Strip Seal	Foot	96

DESIGNED - ADY	EXAMINED	DATE - JANUARY 28, 2013
CHECKED - ARS	<i>Timothy A. Smith</i> ACTING ENGINEER OF STRUCTURAL SERVICES	
DRAWN - KYLE M. STEFFON	PASSED	
CHECKED - ADY ARS	<i>Carl Perry</i> ACTING ENGINEER OF BRIDGES AND STRUCTURES	

STATE OF ILLINOIS  
DEPARTMENT OF TRANSPORTATION

PREFORMED JOINT STRIP SEAL DETAILS  
SN 052-0034

SHEET NO. 4 OF 6 SHEETS

F.A. RTE.	SECTION	COUNTY	TOTAL SHEETS	SHEET NO.
573	02 DECK REPAIR 2013-2	LEE	22	14
CONTRACT NO. 64H74			ILLINOIS FED. AID PROJECT	