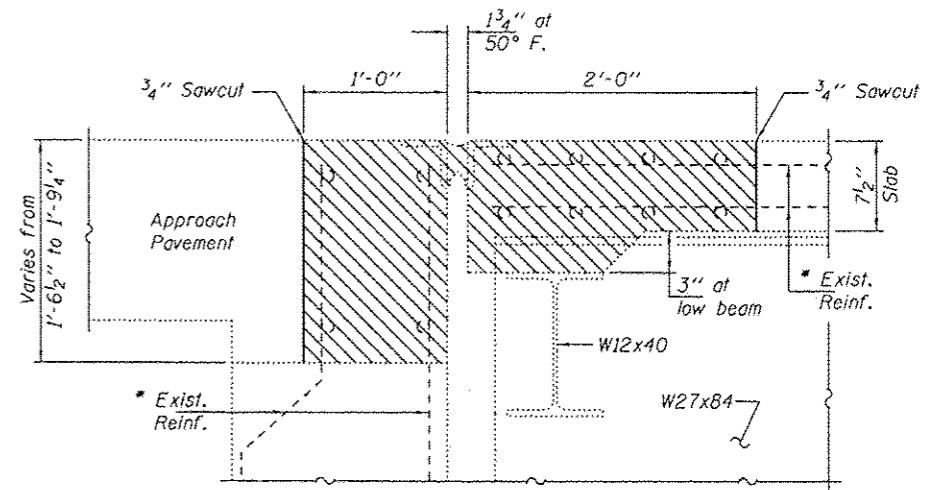


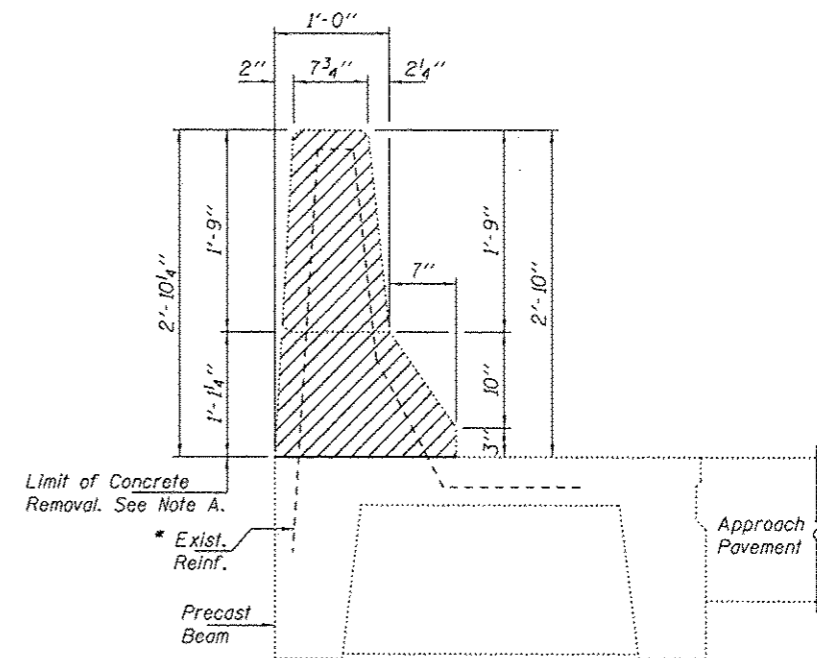
**REMOVAL PLAN**



**SECTION A-A**

Note:  
Hatched areas indicate concrete removal.  
Removal of existing preformed joint seal included in Concrete Removal.

\* Existing reinforcement bars extending into the removal area shall be cleaned, straightened and incorporated into the new construction. Any reinforcement bars that are damaged during concrete removal shall be replaced with an approved bar splicer or anchorage system. Cost included with Concrete Removal.



**SECTION B-B**

Note A:  
The Contractor shall use extreme care during concrete removal so as not to damage the existing approach P.C. Beam.  
Remove Approach Parapet to existing Parapet Joint. Removal of existing parapet joint included in Concrete Removal.

DESIGNED - ARS	EXAMINED
CHECKED - VP	<i>Timothy A. Anhalt</i>
DRAWN - Kyle M. Steffon	ACTING ENGINEER OF STRUCTURAL SERVICES
CHECKED - ARS VP	PASSED
	<i>Carl [Signature]</i>
	ACTING ENGINEER OF BRIDGES AND STRUCTURES

DATE - JANUARY 28, 2013
-------------------------

**STATE OF ILLINOIS  
DEPARTMENT OF TRANSPORTATION**

**JOINT REMOVAL DETAILS  
SN 052-0035**

F.A. RTE.	SECTION	COUNTY	TOTAL SHEETS	SHEET NO.
573	D2 DECK REPAIR 2013-2	LEE	22	18
CONTRACT NO. 64H74				
ILLINOIS FED. AID PROJECT				