

03-08-13 LETTING ITEM 086

INDEX OF SHEETS:

1. COVER SHEET, HIGHWAY STANDARDS
2. SUMMARY OF QUANTITY, GENERAL NOTES
3. R 29 BICYCLE RAILING
- 4-5 EXISTING BRIDGE PLANS

HIGHWAY STANDARDS:

- 701101-03 OFF-RD OPERATIONS, MULTILANE, 15' (4.5 m) TO 24" (600mm) FROM PAVEMENT EDGE
- 701106-02 OFF-RD OPERATIONS, MULTILANE, MORE THAN 15' (4.5 m) AWAY
- 701427-01 LANE CLOSURE, MULTILANE, INTERMITTENT OR MOVING OPERATIONS FOR SPEEDS < 40 MPH
- 701606-08 URBAN LANE CLOSURE, MULTILANE, 2W WITH MOUNTABLE MEDIAN
- 701801-05 SIDEWALK, CORNER OR CROSSWALK CLOSURE
- 701901-02 TRAFFIC CONTROL DEVICES
- 720011-01 METAL POSTS FOR SIGNS, MARKERS & DELINEATORS
- 728001-01 TELESCOPING STEEL SIGN SUPPORT
- 729001-01 APPLICATIONS OF TYPES A & B METAL POSTS (FOR SIGNS & MARKERS)
- 780001-03 TYPICAL PAVEMENT MARKINGS

STATE OF ILLINOIS
DEPARTMENT OF TRANSPORTATION
DIVISION OF HIGHWAYS
**PROPOSED
HIGHWAY PLANS**

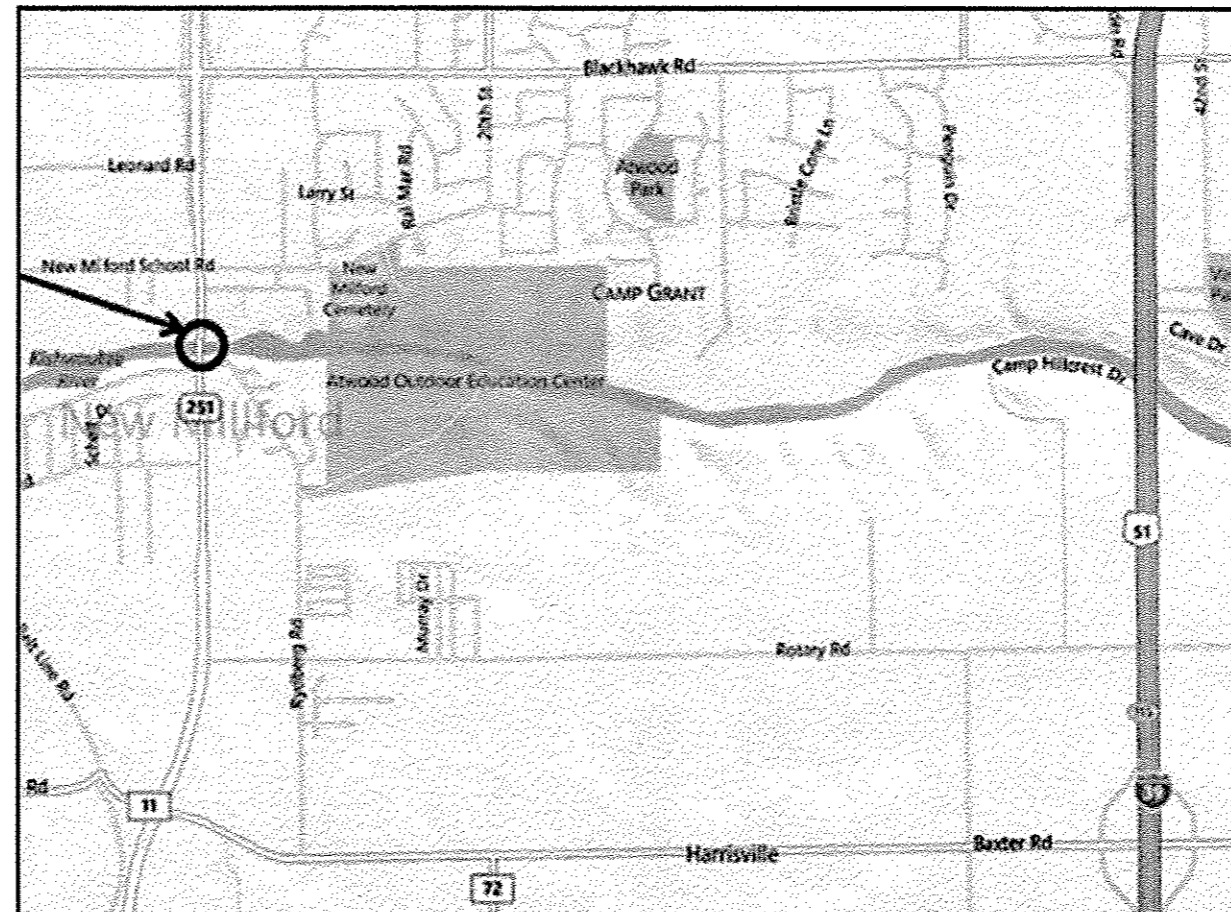
FAU ROUTE 5128 (IL 251)
SECTION D2 BRIDGE REPAIR 2013-4

TYPE of IMPROVEMENT
WINNEBAGO COUNTY

C-92-040-13

T.43N. - R.1E.

SN: 101-0163



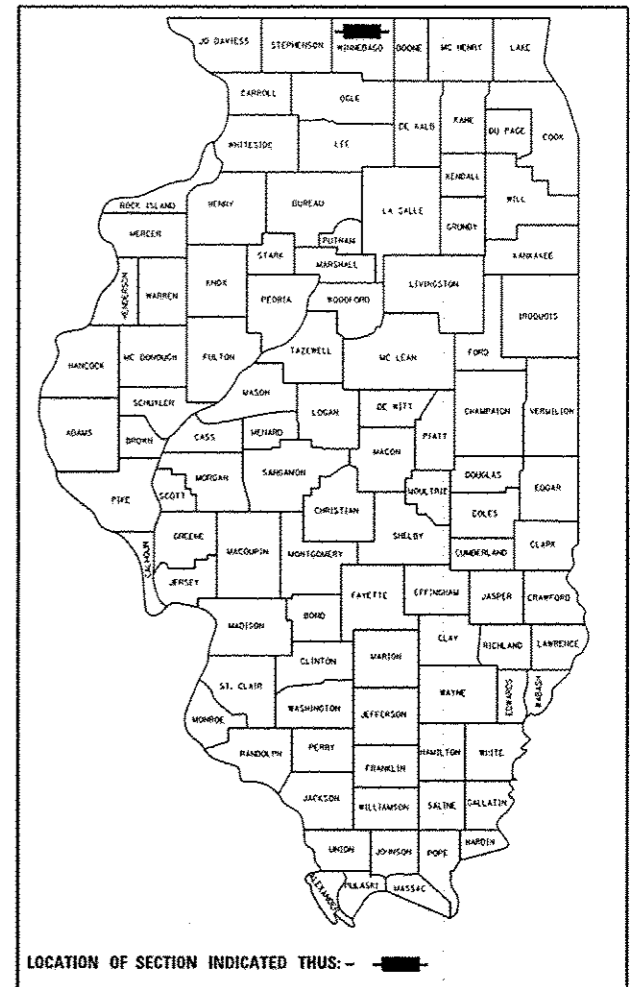
J.U.L.I.E.
JOINT UTILITY LOCATION INFORMATION FOR EXCAVATION
1-800-892-0123
OR 811

ROCKFORD TOWNSHIP, SECTIONS 23 AND 24
PROJECT MANAGER: MAHMOUD ETEMADI (815) 284-5393

CONTRACT NO. 64J45

F.A.U. RTE.	SECTION	COUNTY	TOTAL SHEETS	SHEET NO.
5128	D2 BRIDGE REPAIR 2013-4	WINNEBAGO	5	1
		ILLINOIS	CONTRACT NO. 64J45	

D-92-023-13



STATE OF ILLINOIS
DEPARTMENT OF TRANSPORTATION
DIVISION OF HIGHWAYS

SUBMITTED 1-28 2013
Paul Roeter
DEPUTY DIRECTOR OF HIGHWAYS, REGION ENGINEER

Feb 1 2013
John D. Baramelli, PE
acting ENGINEER OF DESIGN AND ENVIRONMENT

Feb 1 2013
Omer Osman, PE
DIRECTOR OF HIGHWAYS, CHIEF ENGINEER

**PRINTED BY THE AUTHORITY
OF THE STATE OF ILLINOIS**

SUMMARY OF QUANTITIES

GENERAL NOTES

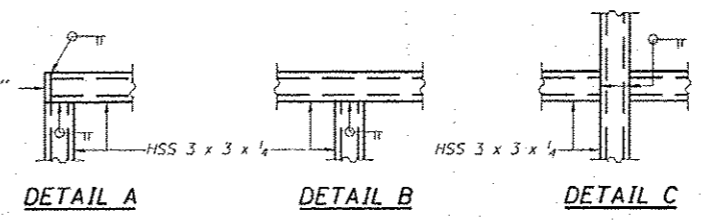
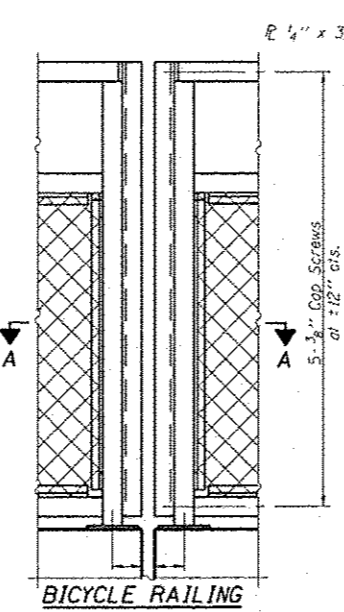
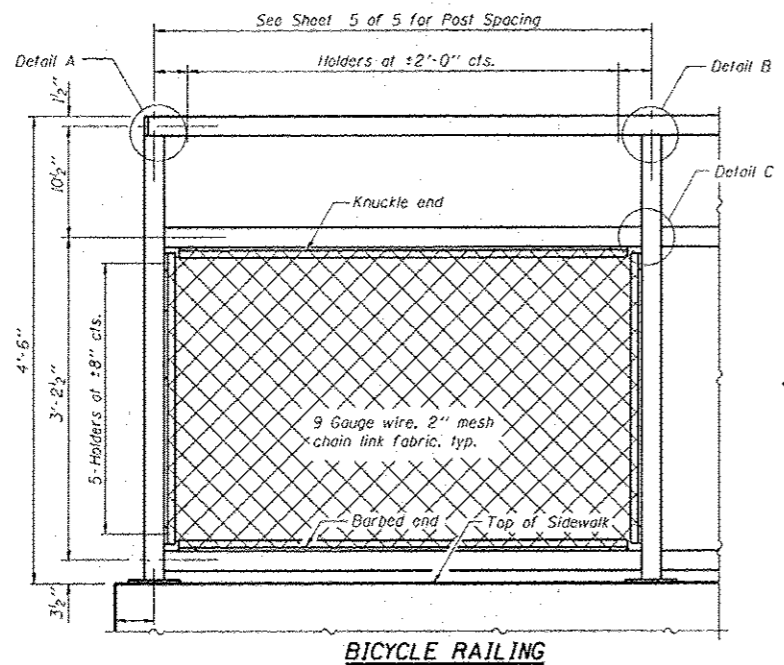
Pay Item Number	Description	Units	URBAN	
			100 % STATE	0014
			Total Quantity	
50901720	BICYCLE RAILING	FOOT	600	
50901750	PARAPET RAILING	FOOT	600	
67100100	MOBILIZATION	L SUM	1	
70102625	TRAFFIC CONTROL AND PROTECTION, STANDARD 701806	L SUM	1	
70102640	TRAFFIC CONTROL AND PROTECTION, STANDARD 701801	L SUM	1	

The Contractor shall be responsible for protecting utility property during construction operations as outlined in Article 107.31 of the Standard Specifications. A minimum of 48 hours advance notice is required for non-emergency work. The JULIE number is 800-892-0123.

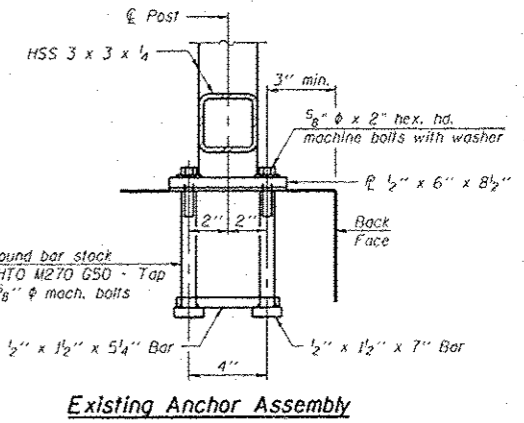
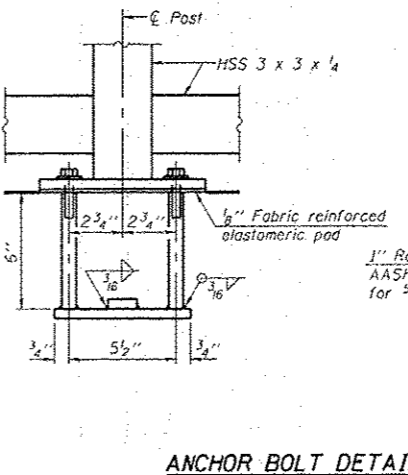
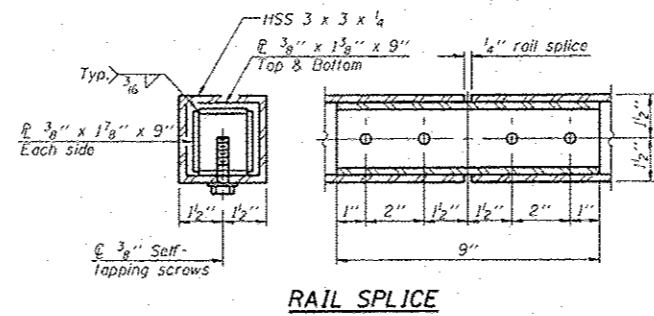
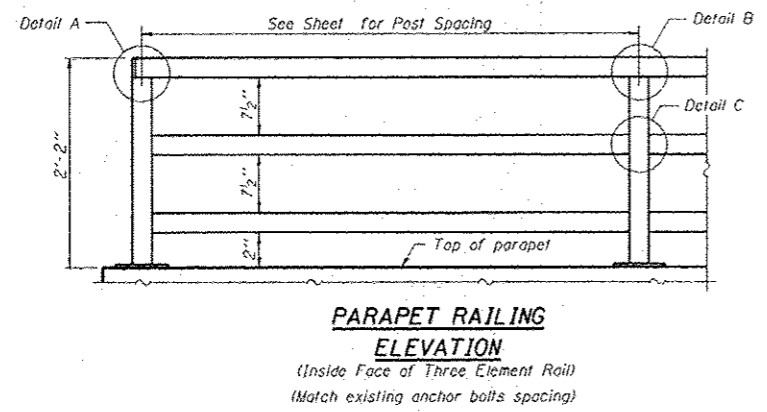
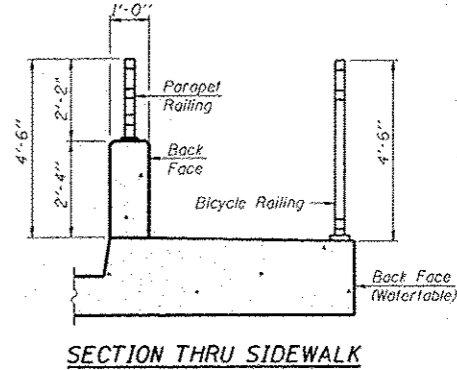
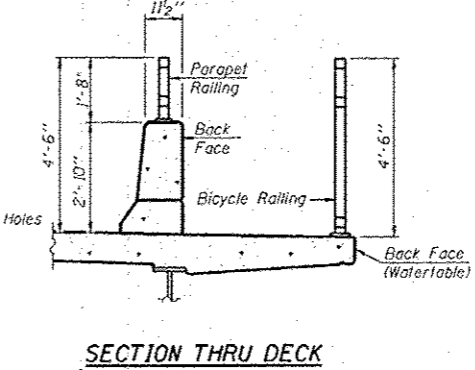
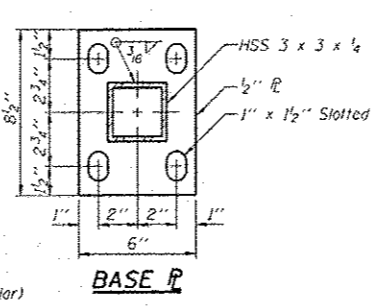
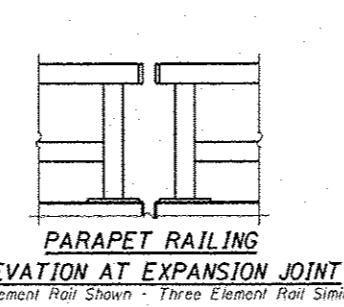
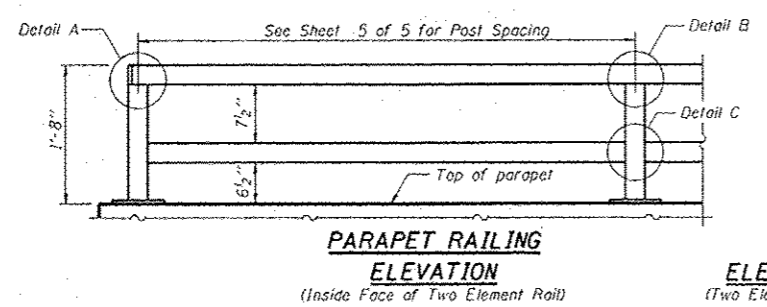
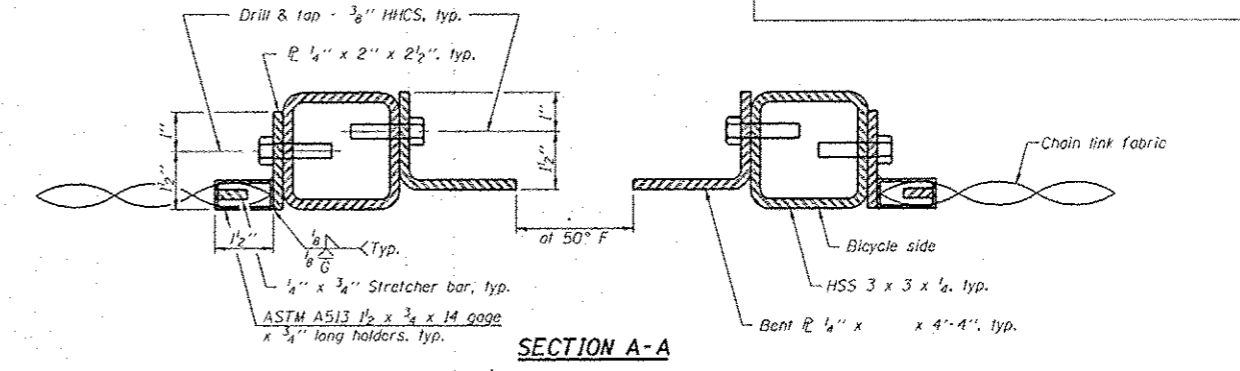
All Borrow/Waste/Use sites must be approved by the Department prior to removing any material from the project or initiating any earth moving activities, including temporary stockpiling outside the limits of construction.

The cost of the removal of existing bicycle railing and parapet railing is included in the pay item BICYCLE RAILING AND PARAPET RAILING.

5



NOTE:
All steel rail elements shall be galvanized according to Article 509.05 of the Standard Specifications.



In lieu of the cast-in-place anchor device shown, the Contractor has the option of drilling and setting 5/8" φ anchor rods according to Article 509.06 of the Standard Specifications. Embedment shall be according to the manufacturer's specifications. Reuse existing anchor bolts embedded in concrete with new 5/8" diameter and 2" long hexagon headed machine bolts with washer.

BILL OF MATERIAL

Item	Unit	Quantity
Bicycle Railing	Foot	600
Parapet Railing	Foot	600

BICYCLE RAILING

IL 251 OVER KISHWAUKEE RIVER
F.A.U. 5128 SECTION 105BR-2
WINNEBAGO COUNTY
STA. 195+48.00
STRUCTURE NO. 101-0163

DESIGNED -	REVISD -
DRAWN -	REVISD -
CHECKED -	REVISD -
DATE -	REVISD -

STATE OF ILLINOIS
DEPARTMENT OF TRANSPORTATION

BICYCLE RAILING
STRUCTURE NO. 101-0163

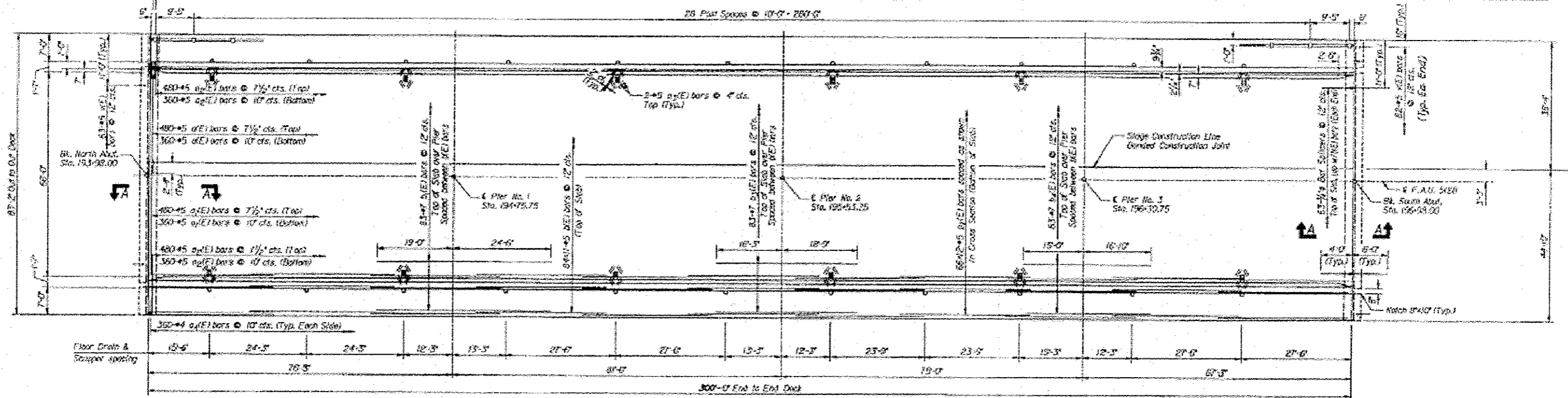
F.A.U. RTE.	SECTION	COUNTY	TOTAL SHEETS	SHEET NO.
5128	D2 BRIDGE REPAIR 2013-4	WINNEBAGO	5	3

CONTRACT NO. 64J45

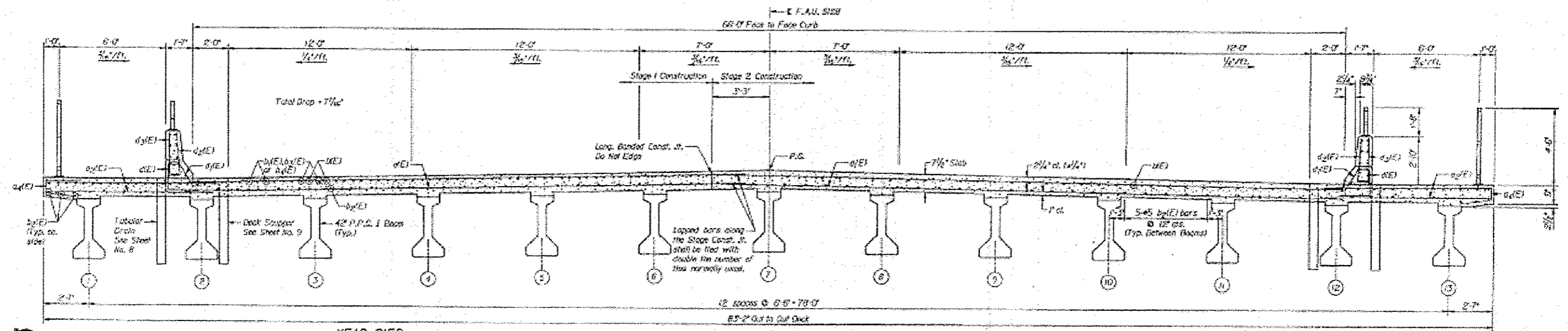
STATE OF ILLINOIS
DEPARTMENT OF TRANSPORTATION



PROJECT NO.	SECTION	COUNTY	TOTAL SHEETS	SHEET NO.	SHEET OF
101-0163	105BR-2	WINNEBAGO	54	37	7
PROJECT TITLE: ILLINOIS PROJECT					



PLAN



CROSS SECTION
(Looking South)

Bascor, Inc.
consulting engineers and planners

DESIGNED	JLT
CHECKED	GSP
DRAWN	SAW
CHECKED	JLT

MINIMUM BAR LAPS
#5 bars - 2'-2"

- NOTES:
- See Sheet No. 8 for Superstructure Details and Bill of Material.
 - Bars indicated thru 20'-3'-4' etc. indicates 20' lines of bars with 3 lengths per line.
 - Reinforcement bars designated (E) shall be epoxy coated.
 - See Sheet No. 16 for Section A-A.

SUPERSTRUCTURE
IL. 251 OVER KISHWAUKEE RIVER
F.A.U. 5128 SECTION 105BR-2
WINNEBAGO COUNTY
STA. 195+48.00
STRUCTURE NO. 101-0163

USER NAME: bartese	DESIGNED -	REVISED -
PLOT SCALE: 1/8" = 1'-0"	DRAWN -	REVISED -
PLOT DATE: Tue Dec 04 14:35:40 2012	CHECKED -	REVISED -
	DATE -	REVISED -

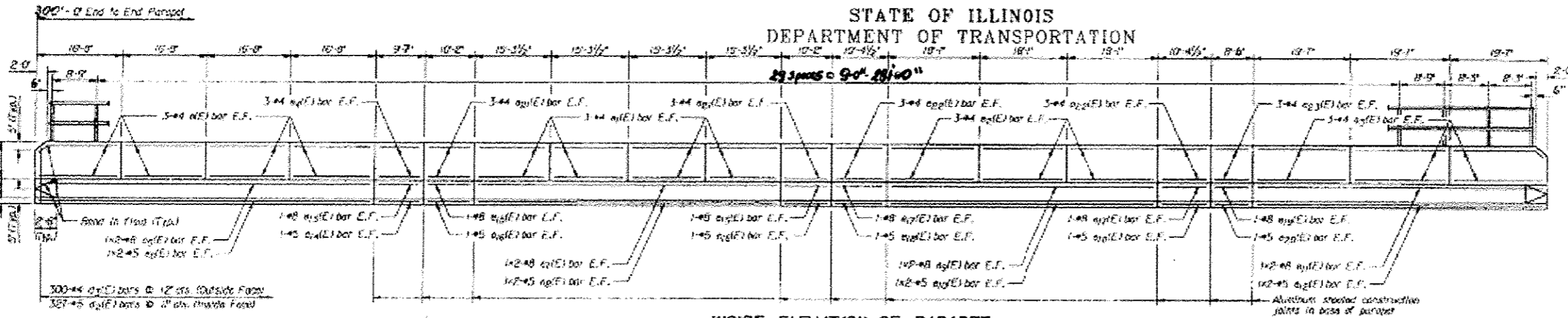
STATE OF ILLINOIS
DEPARTMENT OF TRANSPORTATION

EXISTING BRIDGE PLANS FOR INFORMATION ONLY

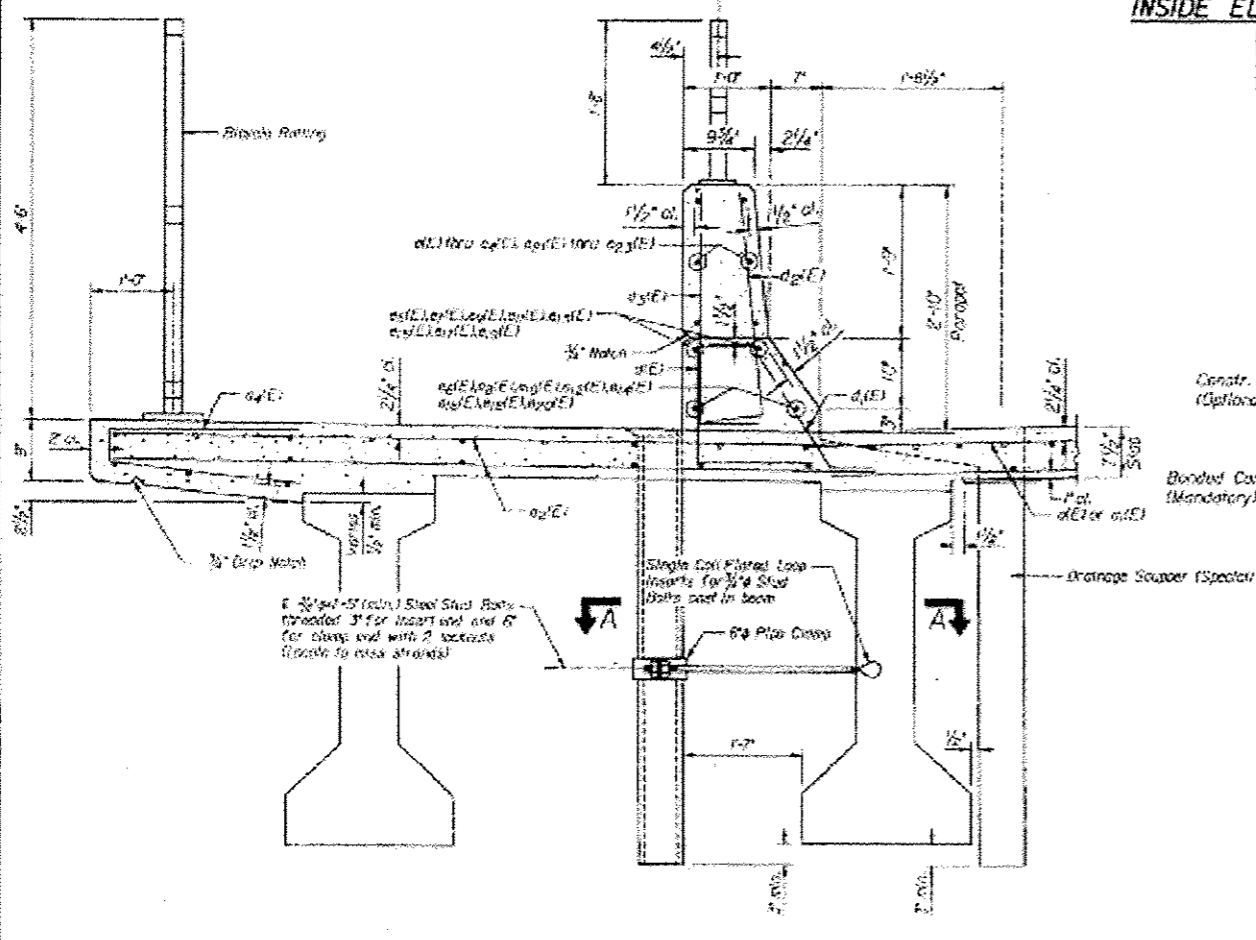
F.A.U. R/E.	SECTION	COUNTY	TOTAL SHEETS	SHEET NO.
5128	D2 BRIDGE REPAIR 2013-4	WINNEBAGO	5	4
CONTRACT NO. 64J45				

STATE OF ILLINOIS
DEPARTMENT OF TRANSPORTATION

PROJECT NO.	SECTION	COUNTY	TOTAL SHEETS	SHEET NO.
100-140-10	105BR-2	WINNEBAGO	64	58
PROJECT TITLE	PROJECT			



INSIDE ELEVATION OF PARAPET



PARAPET JOINT DETAILS

Notes:
Fiberglass pipe shall conform to ASTM D2995, with short-time rupture strength hoop tensile stress of 30,000 p.s.i. minimum. The surface of the fiberglass pipe shall be free of bond inhibiting agents.
The exterior surfaces of the floor drains shall be coated by the manufacturer with a pigment that matches the color of the concrete.
The clamping device and inserts shall be galvanized in accordance with MASHTO H-232.

BILL OF MATERIAL

Bar	No.	Size	Length	FORM
d1(E)	640	#5	32'-4"	---
d1(E)	640	#5	36'-3"	---
d2(E)	1680	#5	10'-0"	---
d3(E)	96	#4	2'-0"	---
d4(E)	720	#4	1'-10"	---
e1(E)	324	#5	29'-0"	---
s1(E)	83	#7	43'-4"	---
s2(E)	792	#5	20'-5"	---
s3(E)	83	#7	35'-0"	---
s4(E)	83	#7	3'-10"	---
r1(E)	600	#4	5'-0"	---
d4(E)	654	#5	2'-0"	---
d1(E)	654	#5	1'-0"	---
d3(E)	600	#4	3'-0"	---
e(E)	48	#4	19'-4"	---
d1(E)	48	#4	17'-0"	---
s2(E)	36	#4	17'-0"	---
s3(E)	36	#4	17'-0"	---
d4(E)	12	#4	9'-2"	---
s1(E)	8	#8	35'-7"	---
s2(E)	8	#5	34'-0"	---
s3(E)	8	#8	52'-9"	---
s4(E)	8	#5	31'-0"	---
s5(E)	8	#8	29'-0"	---
s6(E)	8	#5	20'-3"	---
s7(E)	8	#8	51'-7"	---
s8(E)	8	#5	20'-4"	---
s9(E)	4	#8	9'-2"	---
s10(E)	4	#5	9'-2"	---
s11(E)	8	#8	9'-0"	---
s12(E)	8	#5	9'-0"	---
s13(E)	8	#8	10'-0"	---
s14(E)	4	#8	8'-1"	---
s15(E)	24	#4	8'-10"	---
s16(E)	24	#4	10'-0"	---
s17(E)	12	#4	8'-1"	---
e1(E)	24	#8	21'-10"	---
e2(E)	96	#5	4'-0"	---
s1(E)	4	#8	1'-0"	---
s2(E)	40	#5	8'-0"	---
s3(E)	8	#5	7'-0"	---
s4(E)	4	#5	10'-0"	---
s5(E)	24	#8	23'-0"	---
r1(E)	36	#8	9'-10"	---
e2(E)	72	#4	3'-0"	---
s1(E)	108	#4	10'-0"	---
s2(E)	108	#5	2'-0"	---
s3(E)	144	#4	10'-0"	---
e1(E)	144	#5	4'-0"	---

Concrete Superstructure: 80%
Protective Coat: 20%
Reinforcement Bars, Epoxy Coated: 100%

SUPERSTRUCTURE DETAILS
I.L. 251 OVER KISHWAUKEE RIVER
F.A.U. 5128 SECTION 105BR-2
WINNEBAGO COUNTY
STA. 195+48.00
STRUCTURE NO. 10-I-0163

Bascor, Inc.
Consulting Engineers and Planners

DESIGNED: JLT
CHECKED: GSP
PLANS: SAH
CHECKED: JLT

DATE: 12-3-1997
REV: 5/13-1993

