

STATE OF ILLINOIS
DEPARTMENT OF TRANSPORTATION
DIVISION OF HIGHWAYS

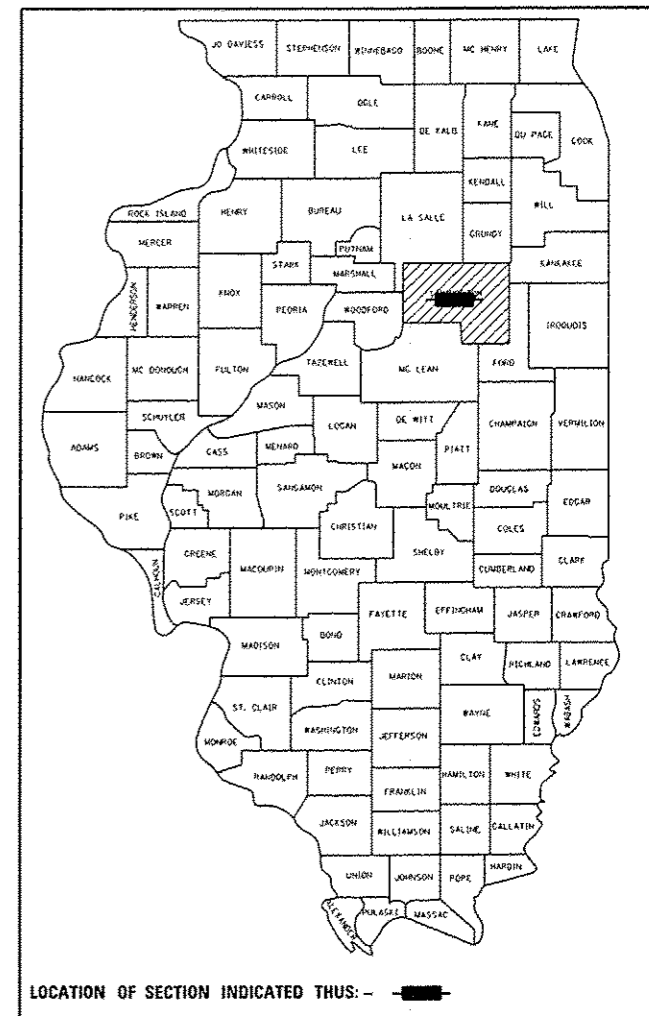
**PROPOSED
HIGHWAY PLANS**

FAP 681 (IL 116)
SECTION (113 BR)BR & (113 BR-1)BR
PROJECT: F-0681(044)
BRIDGE REPLACEMENT
LIVINGSTON COUNTY

C-93-009-11

F.A.P. RTE.	SECTION	COUNTY	TOTAL SHEETS	SHEET NO.
681	(113 BR)BR & (113 BR-1)BR	LIVINGSTON	123	1
ILLINOIS			CONTRACT NO. 66832	

D-93-016-11



LOCATION OF SECTION INDICATED THUS: —■—

FUNCTIONAL CLASSIFICATION

IL 116 - MINOR RURAL ARTERIAL
2009 ADT = 3,550
P.V. = 93.25% S.U. = 4.25% M.U. = 2.5%

C.H. 24 - CLASS IV ROAD
2007 ADT = 250
P.V. = 92.8% S.U. = 5.2% M.U. = 2%

STATE OF ILLINOIS
DEPARTMENT OF TRANSPORTATION
DIVISION OF HIGHWAYS

SUBMITTED *Paul A. Lombardi*
DEPUTY DIRECTOR OF HIGHWAYS, REGION ENGINEER

John D. Baranowski, P.E.
ENGINEER OF DESIGN AND ENVIRONMENT

Over Osman, P.E.
DIRECTOR OF HIGHWAYS, CHIEF ENGINEER

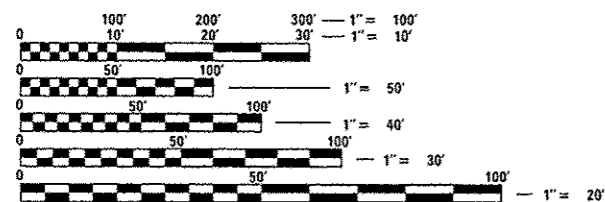
**PRINTED BY THE AUTHORITY
OF THE STATE OF ILLINOIS**

INDEX OF SHEETS

- 1 COVER SHEET
- 2 GENERAL NOTES
- 3-11 SUMMARY OF QUANTITIES
- S.N. 053-0159 (EX) / S.N. 053-0190 (PR)
- 12 TYPICAL SECTIONS
- 13-14 SCHEDULE OF QUANTITIES
- 15 ALIGNMENT & TIES
- 16-18 PLAN AND PROFILE SHEETS
- 19-24 STAGE CONSTRUCTION & TRAFFIC CONTROL
- 25-26 EROSION CONTROL & PAVEMENT MARKING PLANS
- 27-28 UTILITY BORINGS
- 29-30 R.O.W. PLANS
- 31-52 STRUCTURE PLANS AND STRUCTURE BORINGS
- 53-61 EXISTING STRUCTURE PLANS
- 62-63 MISCELLANEOUS DETAILS
- 64-71 CROSS SECTIONS
- S.N. 053-0070 (EX) S.N. 053-0191 (PR)
- 72-75 TYPICAL SECTIONS
- 76-77 SCHEDULES OF QUANTITIES
- 78-79 PLAN AND PROFILE SHEETS - IL 116
- 80-82 PLAN AND PROFILE SHEETS - DETOUR
- 83-84 TRAFFIC CONTROL SHEETS
- 85-86 EROSION CONTROL DETAIL
- 87-88 PAVEMENT MARKING & DETOUR GUARDRAIL LAYOUT
- 89-105 STRUCTURE PLANS
- 106-111 EXISTING STRUCTURE PLANS
- 112 MISCELLANEOUS DETAILS
- 113-123 CROSS SECTIONS

HIGHWAY STANDARDS

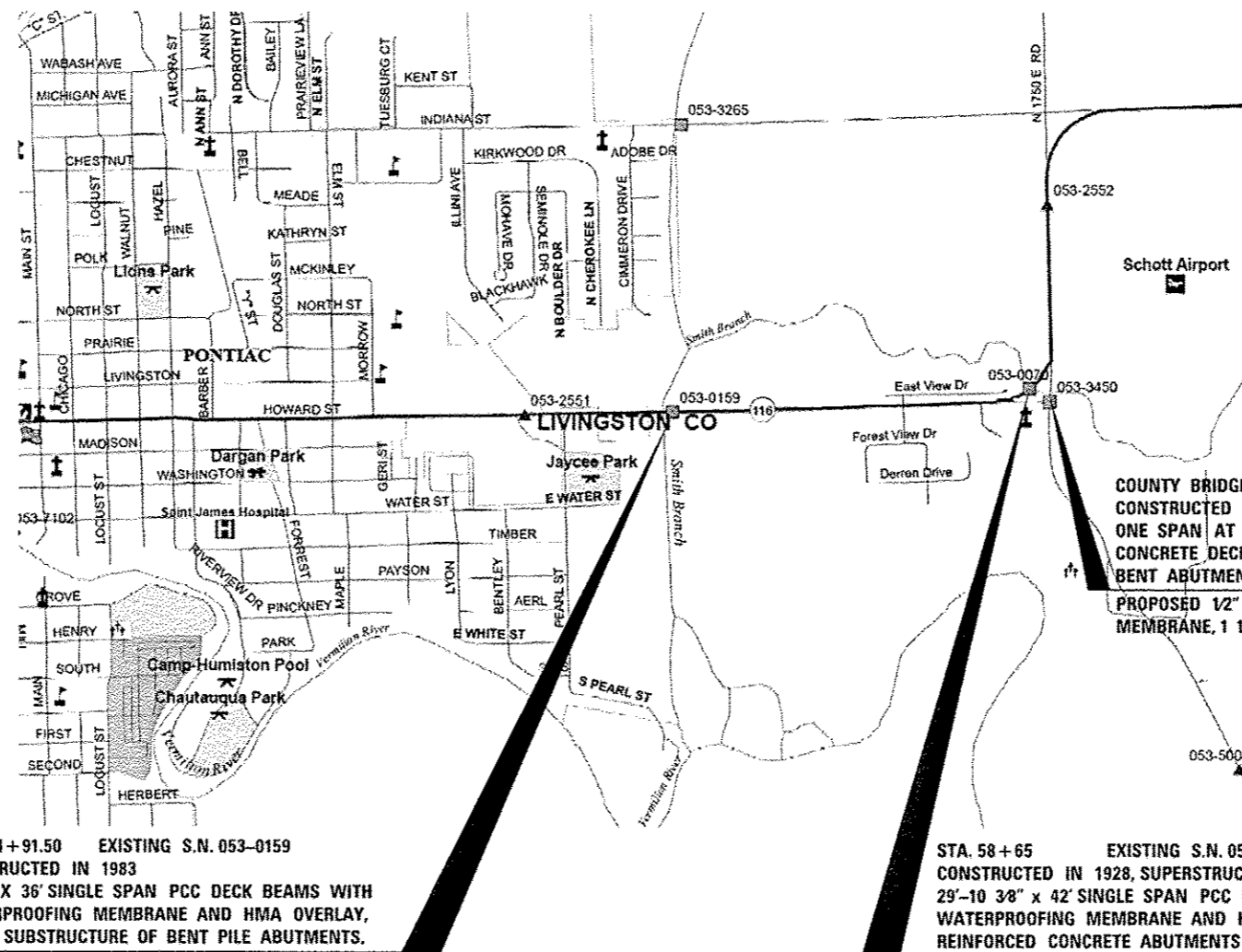
HIGHWAY STANDARDS
LISTED ON SHEET 2



FULL SIZE PLANS HAVE BEEN PREPARED USING STANDARD ENGINEERING SCALES. REDUCED SIZED PLANS WILL NOT CONFORM TO STANDARD SCALES. IN MAKING MEASUREMENTS ON REDUCED PLANS, THE ABOVE SCALES MAY BE USED.

J.U.L.I.E.
JOINT UTILITY LOCATION INFORMATION FOR EXCAVATION
1-800-892-0123
OR 811

PROJECT ENGINEER: CRAIG REED, P.E.
UNIT CHIEF: RUTH SCHWANKE
TOWNSHIP: PONTIAC
CONTRACT NO. 66832



STA. 24+91.50 EXISTING S.N. 053-0159
CONSTRUCTED IN 1983
58'-3" X 36' SINGLE SPAN PCC DECK BEAMS WITH
WATERPROOFING MEMBRANE AND HMA OVERLAY,
ON A SUBSTRUCTURE OF BENT PILE ABUTMENTS.

PROPOSED S.N. 053-0190
70'-6" X 39'-2" SINGLE SPAN REINFORCED
CONCRETE DECK ON WIDE FLANGE BEAMS
ON INTEGRAL SPILL THRU ABUTMENTS

GROSS LENGTH = 1278 FT. = 0.24 MILE
NET LENGTH = 1278 FT. = 0.24 MILE

STA. 58+65 EXISTING S.N. 053-0070
CONSTRUCTED IN 1928, SUPERSTRUCTURE REPLACED IN 1983.
29'-10 3/8" X 42' SINGLE SPAN PCC DECK BEAMS WITH
WATERPROOFING MEMBRANE AND HMA OVERLAY, ON CLOSED
REINFORCED CONCRETE ABUTMENTS AND VERTICAL CANTILEVER
WINGWALLS, SUPPORTED BY UNTREATED TIMBER PILES.

PROPOSED S.N. 053-0191
73' x 40'-8" THREE SPAN 15" REINFORCED CONCRETE
SLAB BRIDGE ON STEEL H-PILES