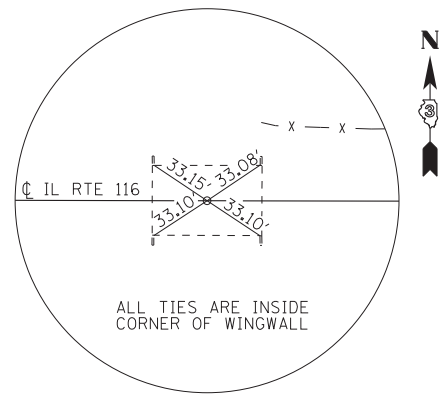
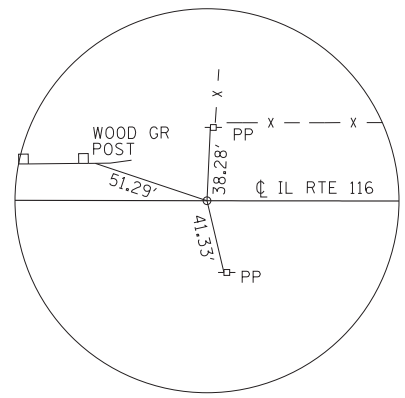


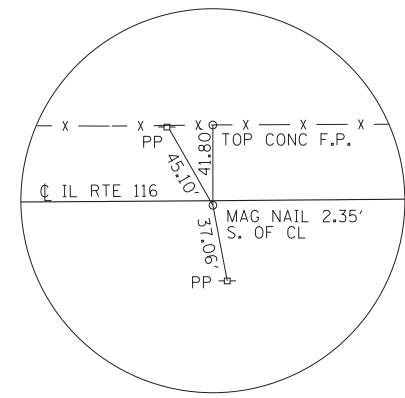
PI STA. 20+19.23  
 N: 1,535,038.9691  
 E: 907,922.8511



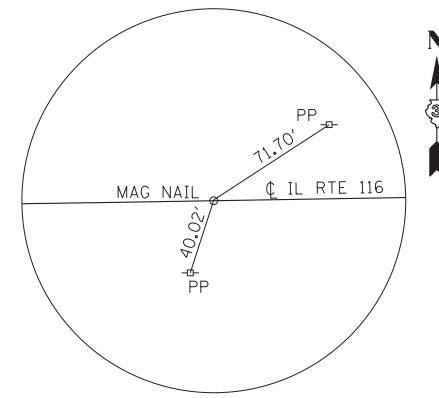
POT STA. 24+91.50  
 N: 1,535,037.9739  
 E: 908,395.1232



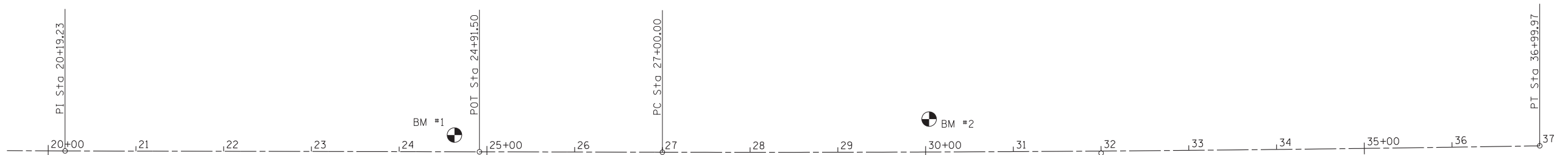
PC STA 27+00.00  
 N: 1,535,037.5346  
 E: 908,603.6244



PI STA 32+00.00  
 N: 1,535,036.4810  
 E: 909,103.6217



PT STA 36+99.97  
 N: 1,535,044.8342  
 E: 909,603.5502



BM #1- CHISELED "□" ON  
 TOP OF NW WINGWALL  
 STA. 24+63.02, 19.09' LT  
 ELEVATION 640.84

BM #2- RR SPIKE IN PP  
 STA. 30+04.12, 37.62' LT  
 ELEVATION 641.79

FILE NAME =	USER NAME = Schwankerg	DESIGNED - RGV
*FILES*	PLOT TIME = \$TIME\$	DRAWN - RGV
	PLOT SCALE = 20.0000' / in.	CHECKED - JRR
	PLOT DATE = 12/13/2012	DATE - 8/10/12



QATES ASSOCIATES, Inc.  
 1000 North 1st Street, Suite 100  
 Rockton, IL 60141  
 Tel: 815.342.2200  
 Fax: 815.342.7222  
 www.qatesinc.com

STATE OF ILLINOIS  
 DEPARTMENT OF TRANSPORTATION

ALIGNMENT & TIES

SCALE: SHEET 1 OF 1 SHEETS STA. TO STA.

F.A.P. RTE.	SECTION	COUNTY	TOTAL SHEETS	SHEET NO.
681	(113 BR/BR & (113 BR-1)BR	LIVINGSTON	123	15
			CONTRACT NO. 66832	
ILLINOIS FED. AID PROJECT				