



The Subsurface Utility Engineering Company
449 Munroe Falls Road
Tallmadge, OH 44278
(330) 794-4455

Test Hole Certification Form Utility Quality Level A Data

ASCE C/1 38-02

Corporate Headquarters
8397 Euclid Avenue
Manassas Park, VA 20111
(703) 361-6005

Control # **SIMD445**
Test Hole # **3**
Plan Scale **1" = 20'**
Sheet # **2 OF 2**
Proposed **BRIDGE**
Date **APRIL 18, 2012**

City, County, State **PONTIAC, IL**
Gen. Loc. **RTE 116 JUST E. OF SMITH BRANCH**
Recorded Size/Material/Type **8" C.I. WATER LINE**
Foreman/Truck#/Form By **E. CARROLL / 223 / T. BARRETT**

Condition of paving prior to work
NO PAVING

B.M. 1 Elev. = **640.84'**
is **GIVEN**

Description: **(BM 1) CHIS "[J]" FOUND, TOP OF NW WINGWALL, 19.09' LT OF CL STA 24+63.02, RTE 116**

So-Deep will attempt to use the BM/HI most applicable to your design. If however, BMs differ by more than .05', resulting differences could cause design conflicts.

B.M. 2 Elev. = **640.11'**
is **GIVEN**

Description: **(CP 500) STEEL PIN FOUND, IN GRASS ROW, 27.07' LT OF CL STA 23+32.63, RTE 116**

Benchmarks Check **BY 0.02'**
Elevations are referenced to **B.M.#2**

Recorded Size/Type of utility **WAS FOUND**

There **WERE NOT** additional utilities in the test hole

The utility **WAS** in good condition

Paving Thickness and type **NO PAVING**

Color of ribbon installed **BLUE**

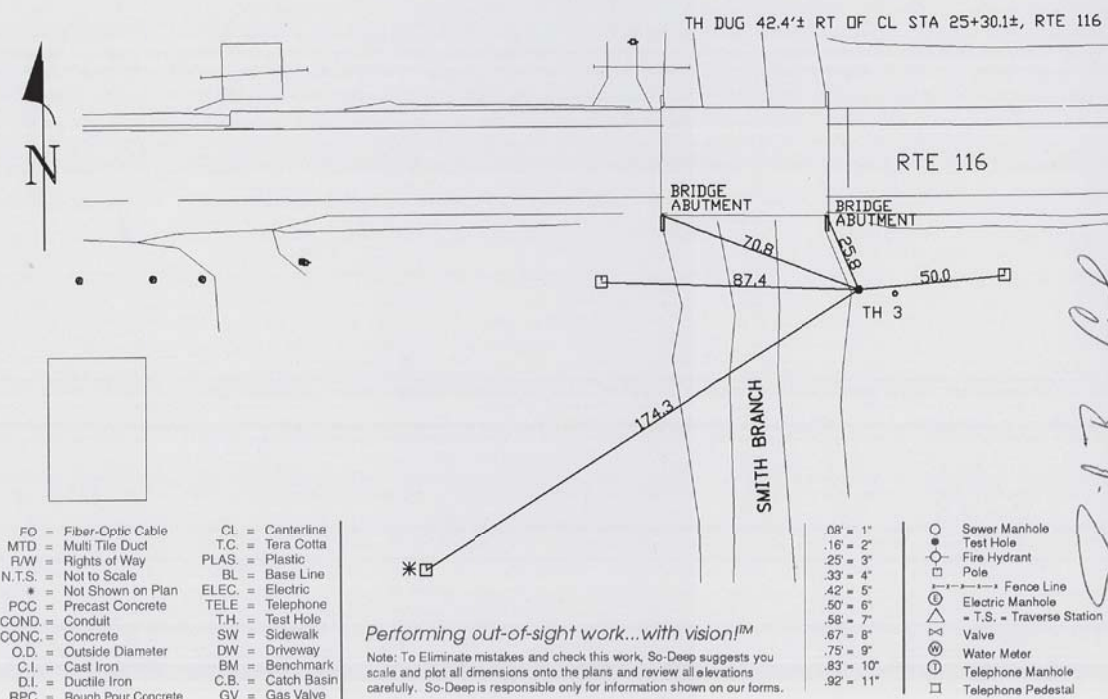
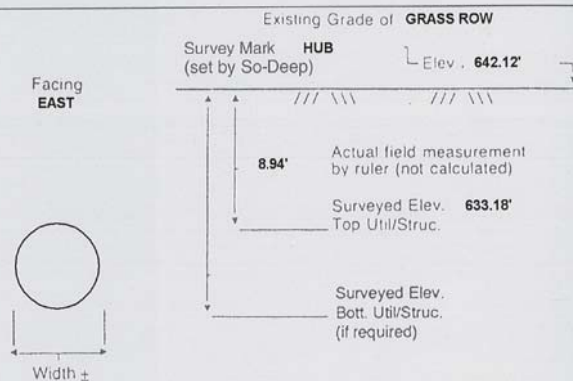
Soil Type **DARK BROWN**

Truck Location **GRASS ROW**

T.H. tied to **HUB**

8 3/4" C.I. WATER LINE
Size/Material/Type
Portion of pipe exposed for O.D. measurement:
FULL

Remarks: **NONE**



- FO = Fiber-Optic Cable
- MTD = Multi Tile Duct
- R/W = Rights of Way
- N.T.S. = Not to Scale
- * = Not Shown on Plan
- PCC = Precast Concrete
- COND. = Conduit
- CONC. = Concrete
- O.D. = Outside Diameter
- C.I. = Cast Iron
- D.I. = Ductile Iron
- RPC = Rough Pour Concrete
- CL = Canterline
- T.C. = Tera Cotta
- PLAS. = Plastic
- BL = Base Line
- ELEC. = Electric
- TELE = Telephone
- SH = Sidewalk
- DW = Driveway
- BM = Benchmark
- C.B. = Catch Basin
- GV = Gas Valve
- = Sewer Manhole
- = Test Hole
- ⊙ = Fire Hydrant
- = Pole
- ⊘ = Fence Line
- ⊙ = Electric Manhole
- ⊙ = T.S. = Traverse Station
- △ = Valve
- ⊙ = Water Meter
- ⊙ = Telephone Manhole
- = Telephone Pedestal

Performing out-of-sight work...with vision!TM
Note: To Eliminate mistakes and check this work, So-Deep suggests you scale and plot all dimensions onto the plans and review all elevations carefully. So-Deep is responsible only for information shown on our forms.

David R. Cole



The Subsurface Utility Engineering Company
449 Munroe Falls Road
Tallmadge, OH 44278
(330) 794-4455

Test Hole Certification Form Utility Quality Level A Data

ASCE C/1 38-02

Corporate Headquarters
8397 Euclid Avenue
Manassas Park, VA 20111
(703) 361-6005

Control # **SIMD445**
Test Hole # **4**
Plan Scale **1" = 20'**
Sheet # **2 OF 2**
Proposed **BRIDGE**
Date **APRIL 18, 2012**

City, County, State **PONTIAC, IL**
Gen. Loc. **RTE 116 JUST E. OF SMITH BRANCH**
Recorded Size/Material/Type **8" C.I. WATER LINE**
Foreman/Truck#/Form By **E. CARROLL / 223 / T. BARRETT**

Condition of paving prior to work
NO PAVING

B.M. 1 Elev. = **640.84'**
is **GIVEN**

Description: **(BM 1) CHIS "[J]" FOUND, TOP OF NW WINGWALL, 19.09' LT OF CL STA 24+63.02, RTE 116**

So-Deep will attempt to use the BM/HI most applicable to your design. If however, BMs differ by more than .05', resulting differences could cause design conflicts.

B.M. 2 Elev. = **640.11'**
is **GIVEN**

Description: **(CP 500) STEEL PIN FOUND, IN GRASS ROW, 27.07' LT OF CL STA 23+32.63, RTE 116**

Benchmarks Check **BY 0.02'**
Elevations are referenced to **B.M.#2**

Recorded Size/Type of utility **WAS FOUND**

There **WERE NOT** additional utilities in the test hole

The utility **WAS** in good condition

Paving Thickness and type **NO PAVING**

Color of ribbon installed **BLUE**

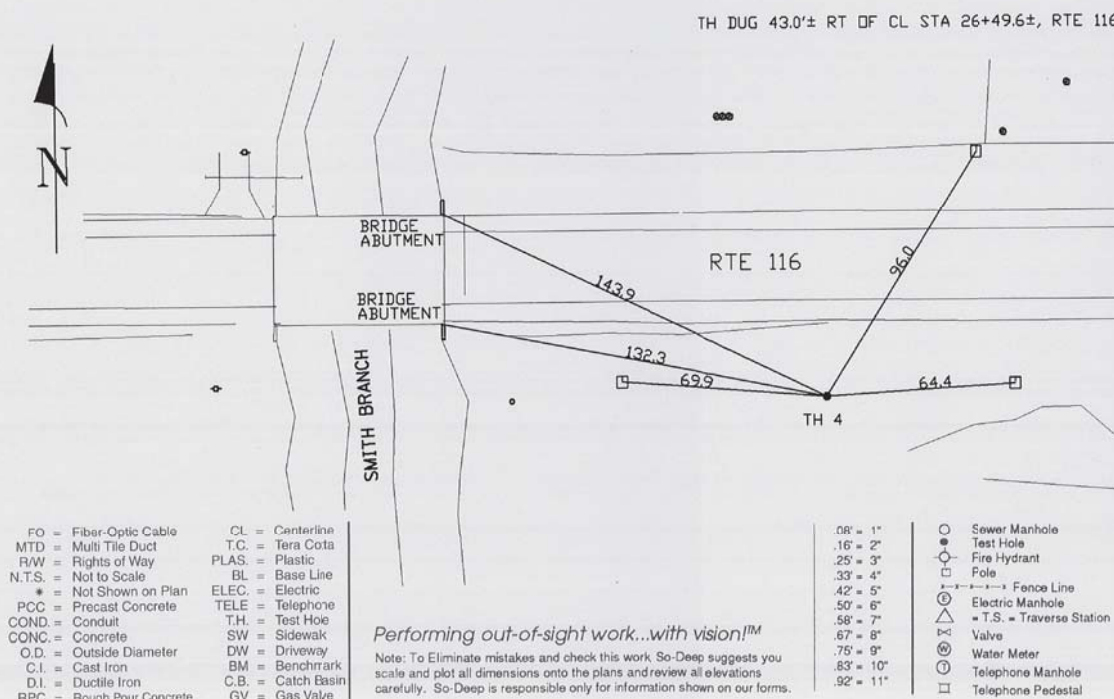
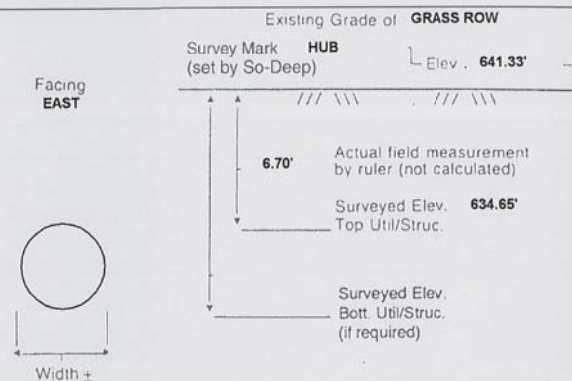
Soil Type **DARK BROWN**

Truck Location **GRASS ROW**

T.H. tied to **HUB**

8 3/4" C.I. WATER LINE
Size/Material/Type
Portion of pipe exposed for O.D. measurement:
FULL

Remarks: **NONE**



- FO = Fiber-Optic Cable
- MTD = Multi Tile Duct
- R/W = Rights of Way
- N.T.S. = Not to Scale
- * = Not Shown on Plan
- PCC = Precast Concrete
- COND. = Conduit
- CONC. = Concrete
- O.D. = Outside Diameter
- C.I. = Cast Iron
- D.I. = Ductile Iron
- RPC = Rough Pour Concrete
- CL = Canterline
- T.C. = Tera Cotta
- PLAS. = Plastic
- BL = Base Line
- ELEC. = Electric
- TELE = Telephone
- SH = Sidewalk
- DW = Driveway
- BM = Benchmark
- C.B. = Catch Basin
- GV = Gas Valve
- = Sewer Manhole
- = Test Hole
- ⊙ = Fire Hydrant
- = Pole
- ⊘ = Fence Line
- ⊙ = Electric Manhole
- ⊙ = T.S. = Traverse Station
- △ = Valve
- ⊙ = Water Meter
- ⊙ = Telephone Manhole
- = Telephone Pedestal

Performing out-of-sight work...with vision!TM
Note: To Eliminate mistakes and check this work, So-Deep suggests you scale and plot all dimensions onto the plans and review all elevations carefully. So-Deep is responsible only for information shown on our forms.

David R. Cole