

GENERAL NOTES

Fasteners shall be ASTM A325 Type 1, mechanically galvanized bolts in painted areas and ASTM A325 Type 3 in unpainted areas. Bolts $\frac{3}{4}$ in. ϕ , holes $\frac{13}{16}$ in. ϕ , unless otherwise noted.

Calculated weight of Structural Steel = AASHTO M 270 Grade 50W = 78,680 pounds

All structural steel shall be AASHTO M 270 Grade 50W.

No field welding is permitted except as specified in the contract documents.

Reinforcement bars designated (E) shall be epoxy coated.

Structural steel shall only be painted for a distance equal to the depth of embedment into the concrete cap plus 3 inches. Painted areas shall be primed in the shop with a Department approved zinc rich primer. Field painting will not be required.

Layout of slope protection system may be varied to suit ground conditions in the field as directed by the Engineer.

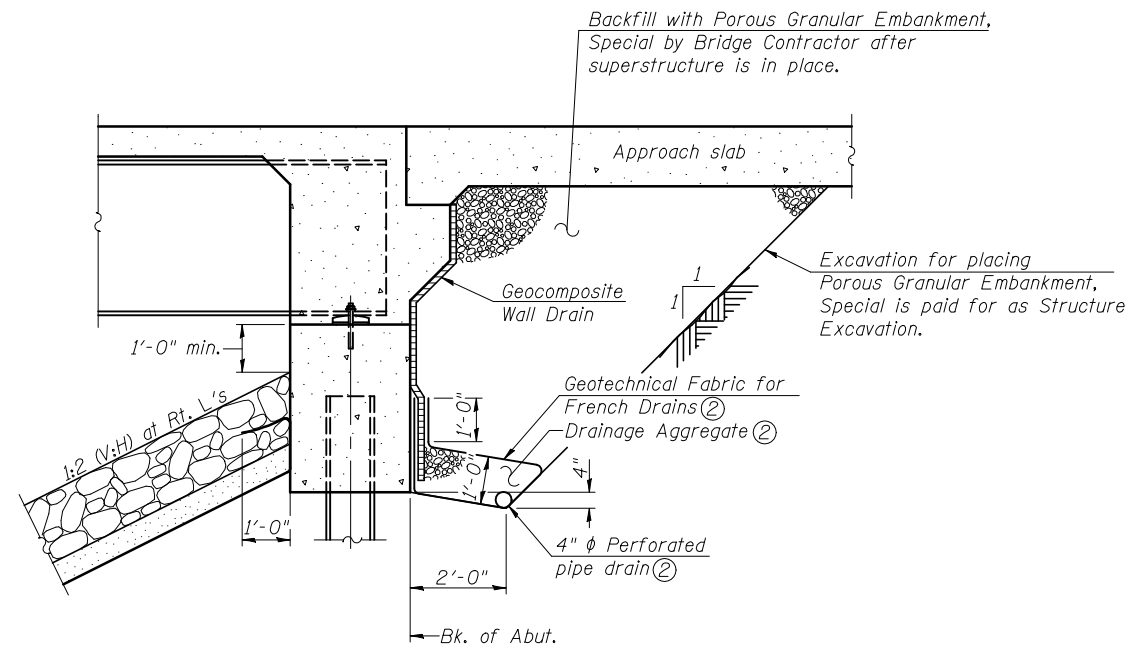
The Contractor is advised that the existing PPC deck beams are in a deteriorated condition with reduced load carrying capacity. It is the Contractor's responsibility to account for the condition of the beams when developing construction procedures for the removal and replacement of the structure.

TOTAL BILL OF MATERIAL

ITEM	UNIT	SUPER	SUB	TOTAL
Stone Riprap, Class A4	Sq. Yd.	-	832	832
Filter Fabric	Sq. Yd.	-	832	832
Removal of Existing Structures No. 1	Each	-	-	1
Structure Excavation	Cu. Yd.	-	190	190
Concrete Structures	Cu. Yd.	-	55.1	55.1
Concrete Superstructure	Cu. Yd.	230.8	-	230.8
Bridge Deck Grooving	Sq. Yd.	496	-	496
Concrete Encasement	Cu. Yd.	-	4.2	4.2
Protective Coat	Sq. Yd.	614	-	614
Furnishing and Erecting Structural Steel	L. Sum	1	-	1
Stud Shear Connectors	Each	1,134	-	1,134
Reinforcement Bars, Epoxy Coated	Pound	49,030	8,650	57,680
Bar Splicers	Each	458	104	562
Furnishing Steel Piles HP12x53	Foot	-	230	230
Driving Piles	Foot	-	230	230
Test Pile Steel HP12x53	Each	-	2	2
Pile Shoes	Each	-	12	12
Name Plates	Each	1	-	1
Anchor Bolts, 1"	Each	24	-	24
Geocomposite Wall Drain	Sq. Yd.	-	60	60
Asbestos Bearing Pad Removal	Each	-	-	14
Temporary Sheet Piling	Sq. Ft.	-	436	436
Pipe Underdrains for Structures 4"	Foot	-	145	145
Porous Granular Embankment, Special	Cu. Yd.	-	88	88

INDEX OF SHEETS

Sheet No.	Description
1	General Plan and Elevation
2	General Data
3	Stage Construction Details
4	Temporary Concrete Barrier For Stage Construction
5-6	Top of Slab Elevations
7-8	Top of Approach Slab Elevations
9	Superstructure
10	Superstructure Details
11	Integral Abutment Diaphragm Details
12-13	Bridge Approach Slab Details
14	Framing Plan
15	Beam and Bearing Details
16-17	Abutment Details
18	HP Pile Details
19	Bar Splicer Assembly and Mechanical Splicer Details
20	Concrete Parapet Slipforming Option
21	Cantilever Forming Brackets for Superstructures with W27 Beams and Smaller
22	Soil Boring Logs



SECTION THRU INTEGRAL ABUTMENT ①

Notes:

- ① All drainage system components shall extend to 2'-0" from the end of each wingwall except an outlet pipe shall extend until intersecting with the side slopes or as directed by the Engineer. The pipes shall drain into concrete headwalls. (See Article 601.05 of the Standard Specifications and Highway Standard 601101).
- ② Included in the cost of Pipe Underdrains for Structures 4".



USER NAME =	DESIGNED - DBB	REVISED
	CHECKED - JAD	REVISED
PLOT SCALE =	DRAWN - DBB	REVISED
PLOT DATE =	CHECKED - JAD	REVISED

**STATE OF ILLINOIS
DEPARTMENT OF TRANSPORTATION**

**GENERAL DATA
STRUCTURE NO. 053-0190**

SHEET NO. 2 OF 22 SHEETS

F.A.P. RTE.	SECTION	COUNTY	TOTAL SHEETS	SHEET NO.
681	(113 BR)BR	LIVINGSTON	123	32
				CONTRACT NO. 66832

ILLINOIS FED. AID PROJECT