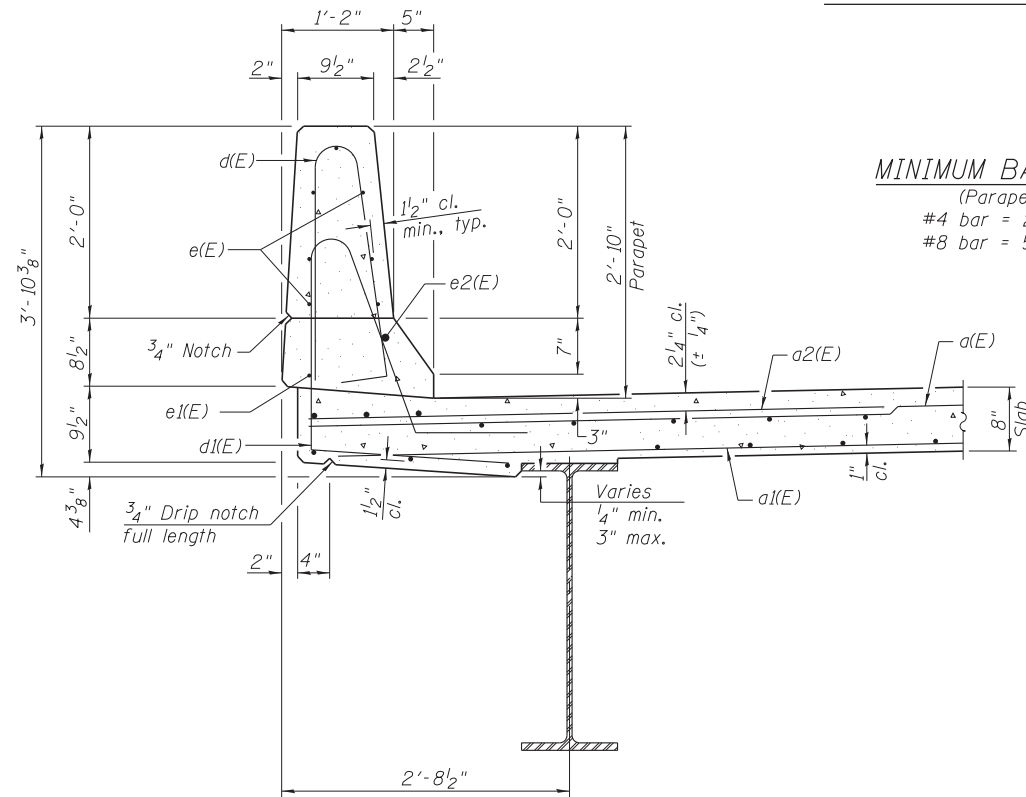
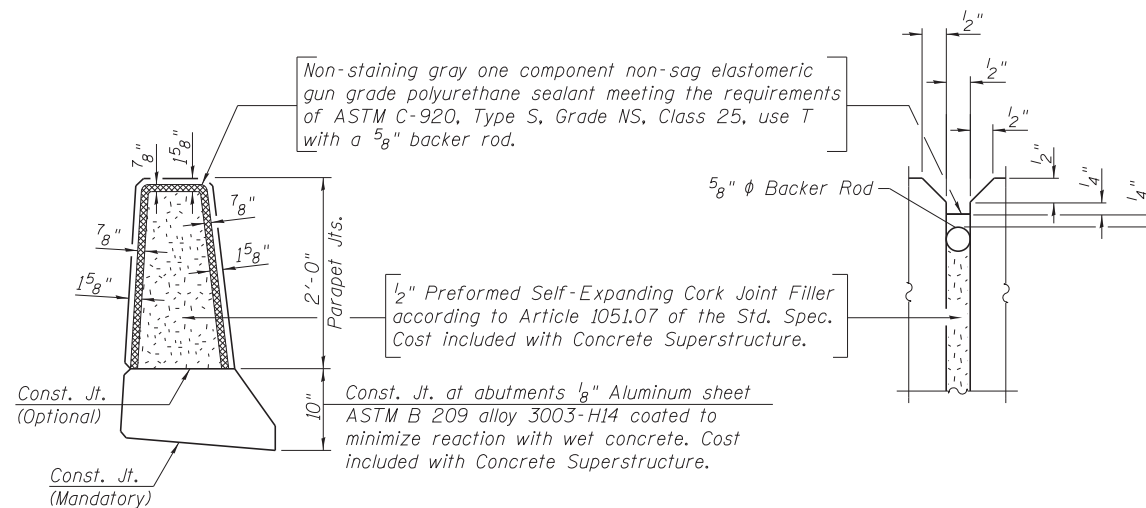


INSIDE ELEVATION OF PARAPET



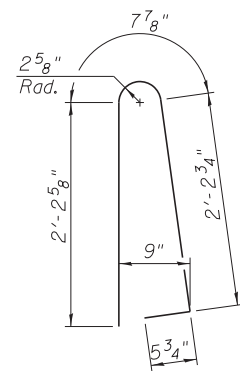
SECTION THRU PARAPET

**MINIMUM BAR LAP**  
(Parapet)  
#4 bar = 2'-0"  
#8 bar = 5'-2"

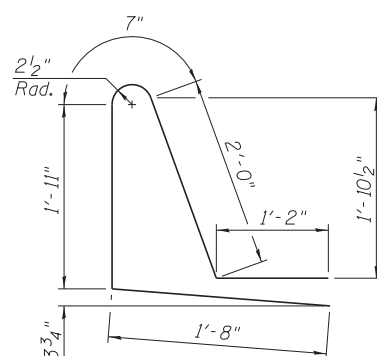


PARAPET JOINT DETAILS

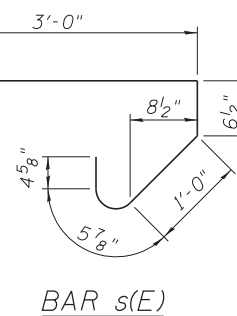
- Notes:  
 ① Bars indicated thus 1 x 4-#4 etc. indicates 1 line of bars with 4 lengths per line.  
 ② For Approach Parapet details, see sheet 13 of 22.



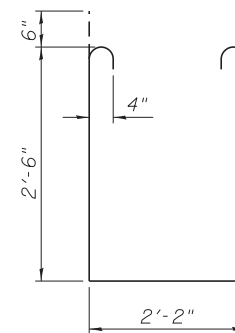
BAR d(E)



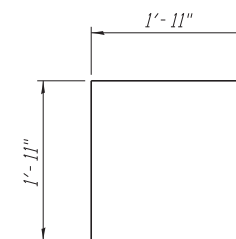
BAR d1(E)



BAR s(E)



BAR s1(E)



BAR v(E)

**SUPERSTRUCTURE  
BILL OF MATERIAL**

Bar	No.	Size	Length	Shape
a(E)	262	#5	19'-1"	—
a1(E)	170	#5	18'-9"	—
a2(E)	262	#6	6'-6"	—
b(E)	126	#5	25'-2"	—
b1(E)	128	#5	19'-6"	—
d(E)	156	#5	5'-7"	U
d1(E)	156	#5	7'-4"	U
e(E)	56	#4	17'-3"	—
e1(E)	8	#4	19'-1"	—
e2(E)	6	#8	26'-10"	—
m(E)	20	#6	19'-3"	—
m1(E)	24	#6	8'-8"	—
m2(E)	8	#6	6'-4"	—
m3(E)	4	#6	2'-4"	—
s(E)	116	#5	5'-5"	U
s1(E)	72	#4	8'-2"	U
v(E)	80	#5	3'-10"	U
Concrete Superstructure			Cu. Yd.	110.6
Reinforcement Bars, Epoxy Coated			Pound	22,640