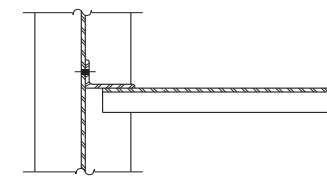
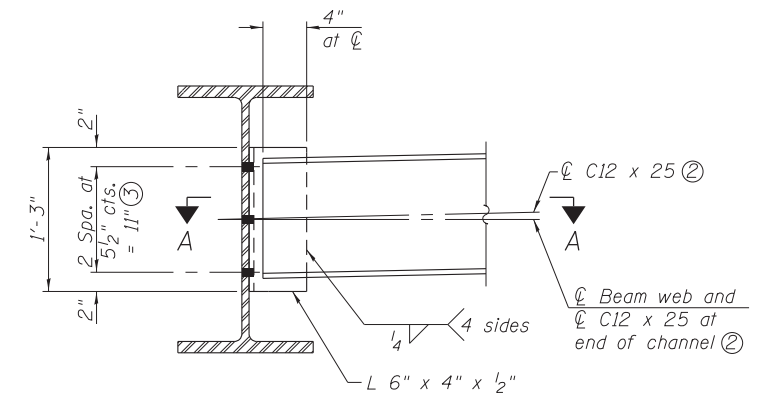


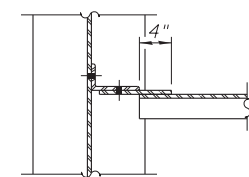
PLAN



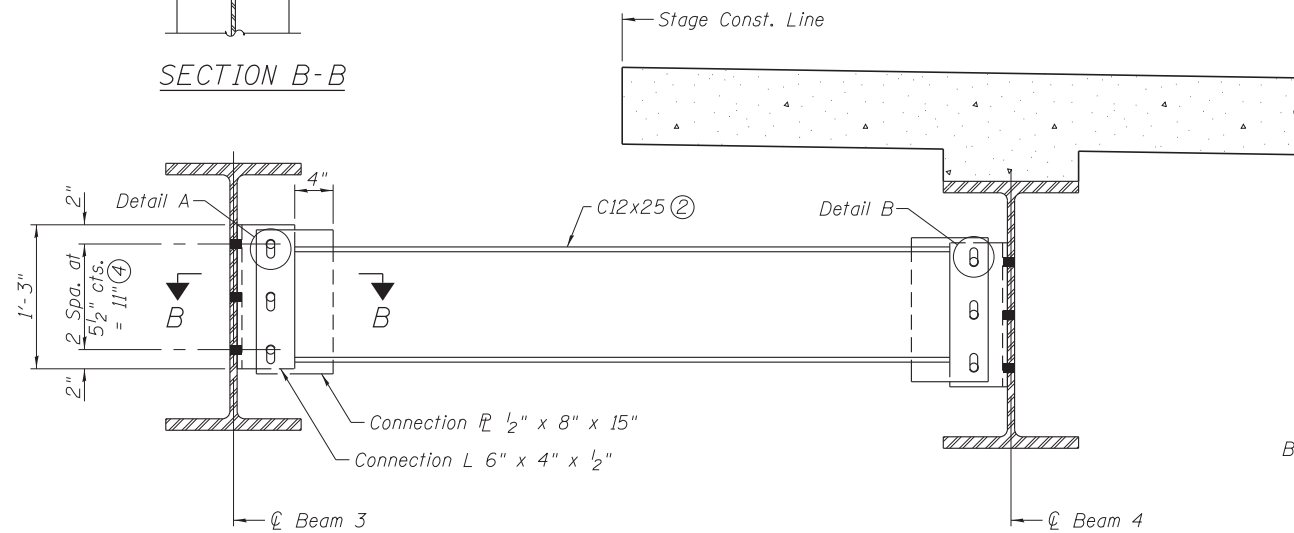
SECTION A-A



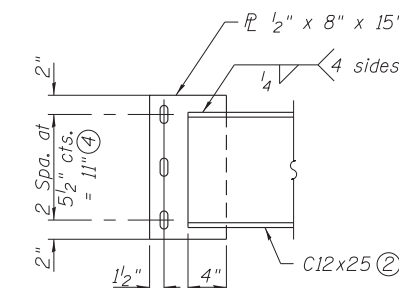
INTERIOR DIAPHRAGM D
(16 Required)



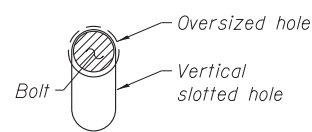
SECTION B-B



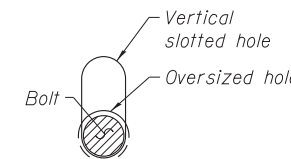
INTERIOR DIAPHRAGM D1
(4 Required)



CONNECTION PL DETAIL



DETAIL A



DETAIL B

Notes:

- ① Two hardened washers required for each set of oversized holes.
- ② Alternate channels C12x30 are permitted to facilitate material acquisition. Calculated weight of structural steel is based on the lighter section. The alternate, if utilized, shall be provided at no additional cost to the Department.
- ③ 3/4" ϕ HS bolts, 1 5/16" ϕ holes.
- ④ Use 3/4" ϕ HS bolts. Provide 1 3/16" x 1 7/8" vertical slotted holes in connection plates attached to channel diaphragms only. Provide 1 5/16" ϕ oversized holes in the beam webs and both legs of the connection angle. Two hardened washers required for each set of oversized holes. Two 5/16" structural plate washers required for each set of slotted holes.
- ⑤ The Fabricator shall detail connection plate locations on channel to allow for differential deflection during Stage II deck and parapet pour. Before the deck and parapet concrete is poured, the bolts in the Beam 3 connection shall be positioned at the top of the slotted holes and the bolts in the Beam 4 connection shall be positioned at the bottom of the slotted holes. The bolts shall be finger tight until the Stage II deck and parapet concrete is poured, allowing the Stage II beams to deflect vertically without stressing the D1 diaphragms or Stage I beams. The bolts shall be fully tightened after the Stage II deck and parapet concrete is poured. The diaphragm connection shall be detailed so that the centerline of beam web and centerline of diaphragm channel align in their final position.
- ⑥ All diaphragms shall be installed as steel is erected and secured with erection pins and bolts except as otherwise noted.
- ⑦ Load carrying components designated "NTR" shall conform to the Impact Testing Requirement, Zone 2.

USER NAME =	DESIGNED - DBB	REVISED
	CHECKED - JAD	REVISED
PLOT SCALE =	DRAWN - DBB	REVISED
PLOT DATE =	CHECKED - JAD	REVISED

F.A.P. RTE.	SECTION	COUNTY	TOTAL SHEETS	SHEET NO.
681	(113 BR1BR & (113 BR-1)BR	LIVINGSTON	123	44
CONTRACT NO. 66832				