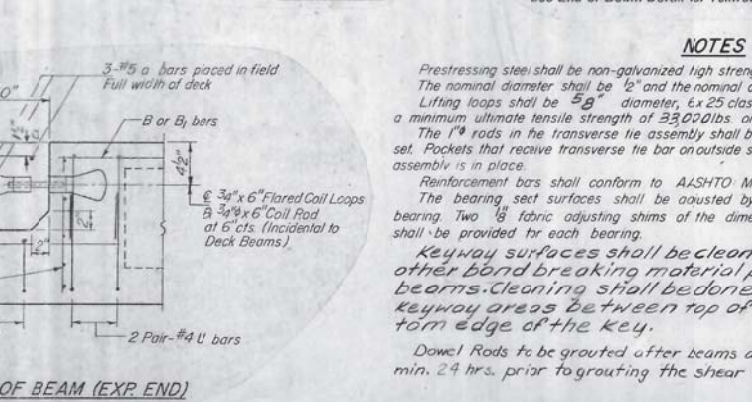
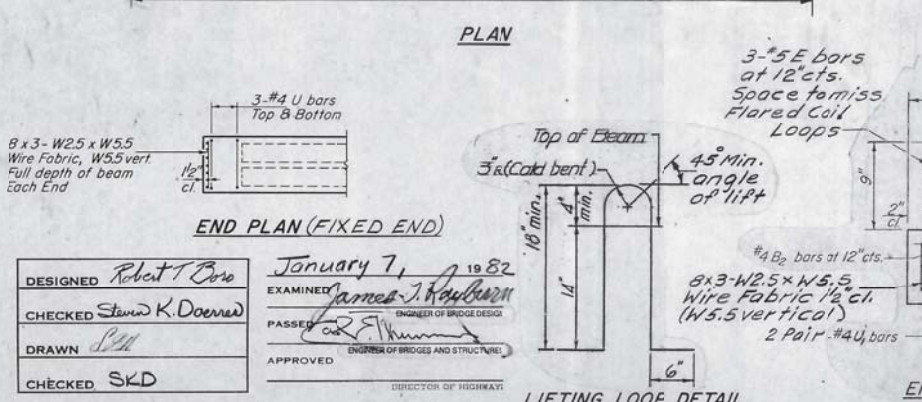
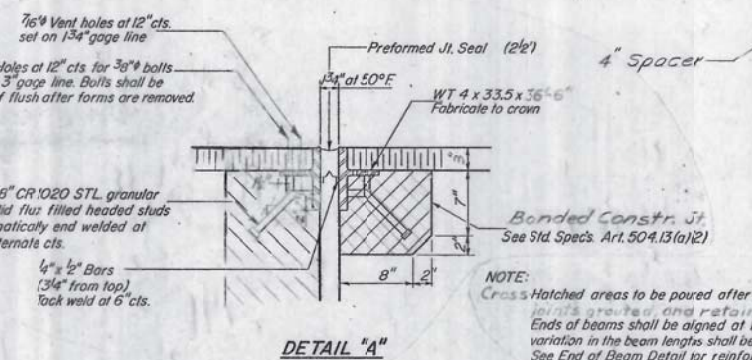
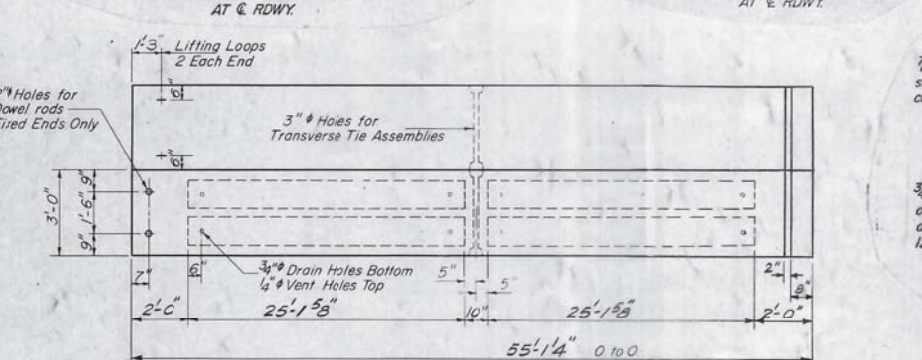
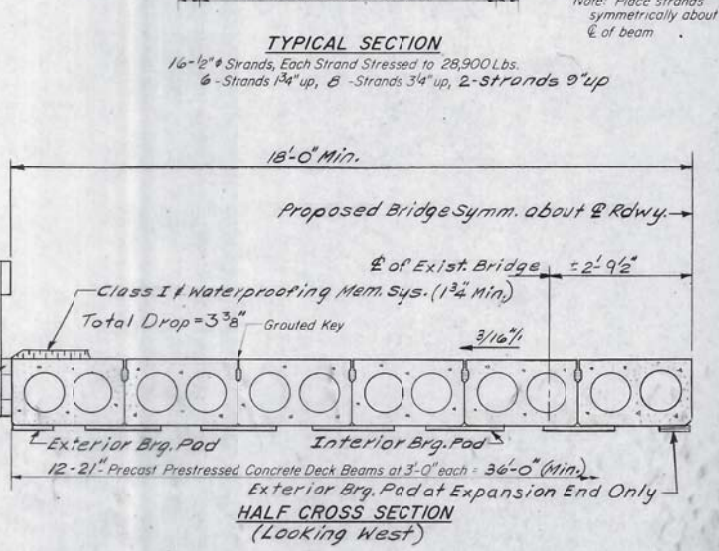
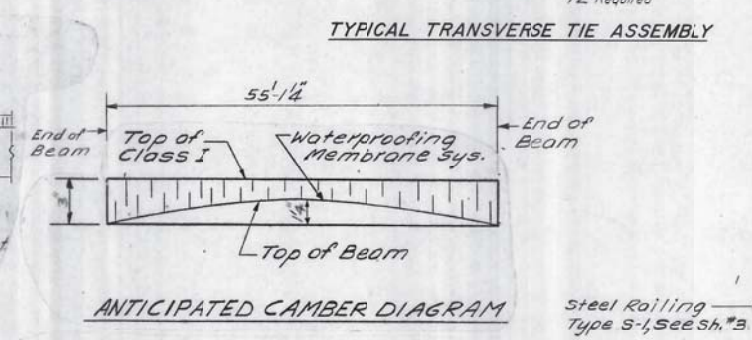
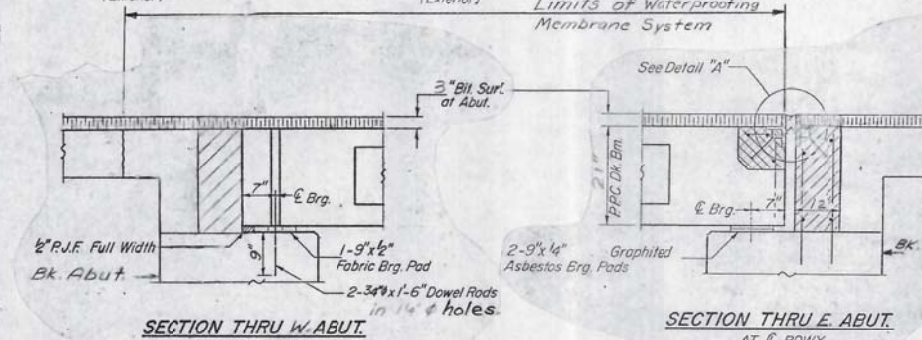
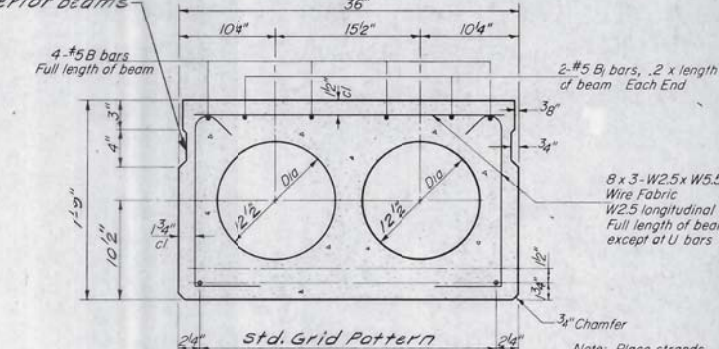
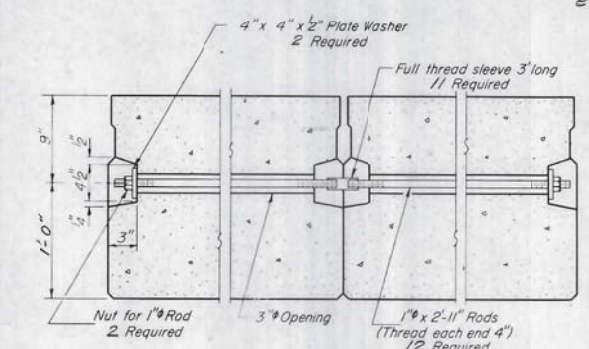
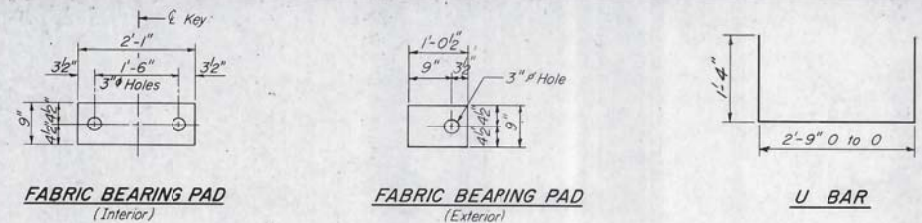


STATE OF ILLINOIS
DEPARTMENT OF TRANSPORTATION

ROUTE NO.	SECTION	COUNTY	TOTAL SHEETS	SHEET NO.
681	113BR	LIVINGSTON	25	18
FED. ROAD DIST. NO. 7			ILLINOIS	FED. AID PROJECT

SHEET NO. 2
4 SHEETS



NOTE: Cross Hatched areas to be poured after beams have been erected, joints grouted, and retainer channels are in place. Ends of beams shall be aligned at the expansion joints. Any lineal variation in the beam lengths shall be placed at the fixed joint. See End of Beam Detail for reinforcement.

NOTES

Prestress steel shall be non-galvanized high strength, stress-relieved 7-wire strand, Grade 270. The nominal diameter shall be 1/2" and the nominal cross-sectional area shall be 0.153 sq. in. Lifting loops shall be 5/8" diameter, 25 class wire rope with fiber core and shall have a minimum ultimate tensile strength of 33,000 lbs. or 2-1/2" 270ksi strands. The 1" rods in the transverse tie assembly shall be tightened to a snug fit and the threads set. Pockets that receive transverse tie bar on outside shall be filled with grout after transverse tie assembly is in place. Reinforcement bars shall conform to AASHTO M-31 or M-53, Grade 60. The bearing seat surfaces shall be caulked by shimming to assure firm and even bearing. Two 1/8" fabric adjusting shims of the dimensions of the Exterior Bearing Pad shall be provided for each bearing. Keyway surfaces shall be cleaned to remove form oil or other bond breaking material prior to shipment of the beams. Cleaning shall be done by sandblasting the keyway areas between top of the beam and the bottom edge of the key. Dowel Rods to be grouted after beams are in place and allowed to cure min. 24 hrs. prior to grouting the shear keys.

BILL OF MATERIAL

Bar	No	Size	Length	Shape
a	3	#5	35'-9"	
Precast Prestressed Concrete Deck Beams (21") Sq Ft 1984				
Class X Concrete Cu.Yds. 6.4				
Reinforcement Bars Lbs. 110				

P.P.C. DECK BEAMS
F.A. RT.681 SEC.113-BR
LIVINGSTON COUNTY
STA.24+91.5

DESIGNED Robert T. Bore
CHECKED Steve K. Doern
DRAWN SKD
CHECKED SKD
January 7, 1982
EXAMINED James J. Korb
PASSED
APPROVED
DIRECTOR OF HIGHWAY

PD-3-S 6-15-80