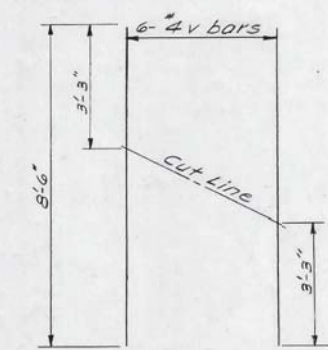


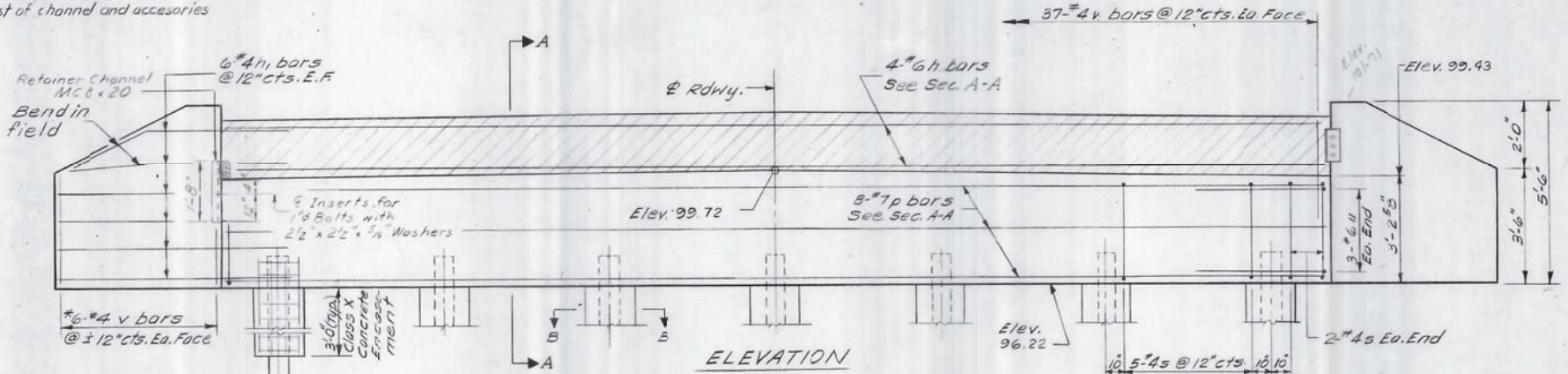
STATE OF ILLINOIS
DEPARTMENT OF TRANSPORTATION

ROUTE NO.	SECTION	COUNTY	TOTAL SHEETS	SHEET NO.
RT. 681	15BR	LIVINGSTON	25	20
SHEET NO. 4				

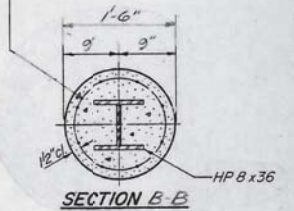
Notes:
Hatched area shall be poured after beams are in place Class X concrete included with super structure.
All edges shall have standard 3/4" chamfers except as noted.
After 3" x 10" Expansion Joint is poured and cured the retainer channels shall be removed. Cast of channel and accessories shall be incidental to Beams.



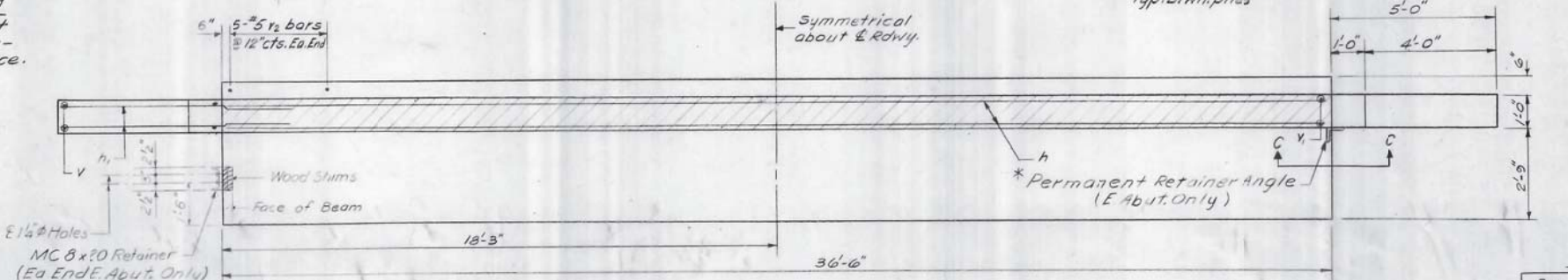
FIELD CUTTING DIAGRAM
* Order v bars full length. Cut to fit as shown and use remainder of bars in other face.



Welded wire fabric 6" x 6" mesh #2 wire weighing 58#/100 sq. ft. The cost of Class X Concrete Encasement and Reinforcement is incidental to the cost of furnishing piles. Forms for encasement may be omitted when soil conditions will permit.

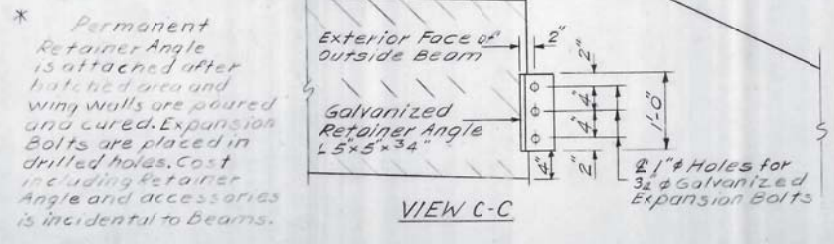
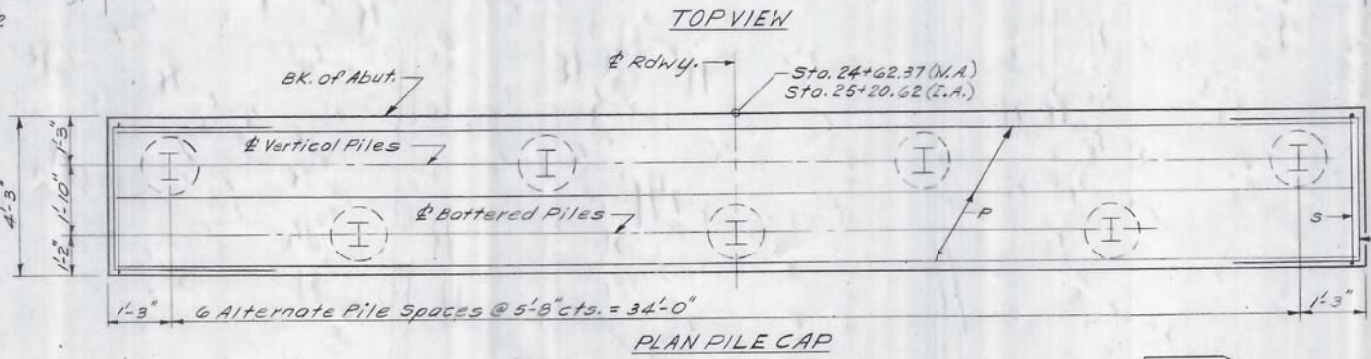
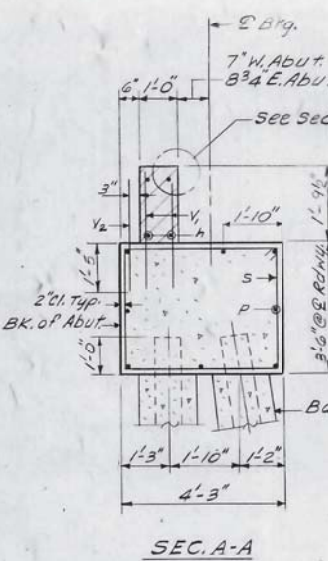


FILE DATA
Type: HP 8 x 36
Capacity: Driven to Refusal
Est. Length: 16' (W), 28' (E)
No. Req'd: 7 (W. Abut.)
6+1 test pile (E. Abut.)
REQUIRED LENGTH: 20' (W)
28' (E)



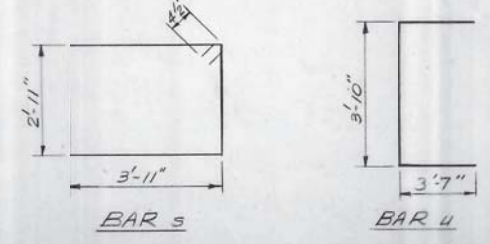
TWO ABUTMENTS
BILL OF MATERIAL

Bar	No.	Size	Length	Shape
h	8	#6	36'-3"	—
h ₁	48	#4	7'-0"	—
P	16	#7	36'-3"	—
s	68	#4	14'-5"	□
u	12	#6	11'-0"	□
v	24	#4	8'-6"	—
v ₁	148	#4	3'-0"	—
v ₂	20	#5	3'-0"	—
Class X Concrete			Cu. Yds.	42.1
Reinforcement Bars			Lbs.	3200
Steel H-Piles (8 x 36)			Lin. Ft	280
Test Piles, Steel HP 8 x 36			Each	1



DESIGNED Robert T. Bosc
CHECKED Steven K. Diemer
DRAWN [Signature]
CHECKED SKD

EXAMINED [Signature] January 7, 1982
PASSED [Signature] ENGINEER OF BRIDGE DESIGN
APPROVED [Signature] ENGINEER OF BRIDGES AND STRUCTURES
DIRECTOR OF HIGHWAYS



* Permanent Retainer Angle is attached after hatched area and wing walls are poured and cured. Expansion bolts are placed in drilled holes. Cost including retainer angle and accessories is incidental to beams.

ABUTMENTS
F.A. RT. 681 SEC. 113-BR
LIVINGSTON COUNTY
STA. 24+91.5