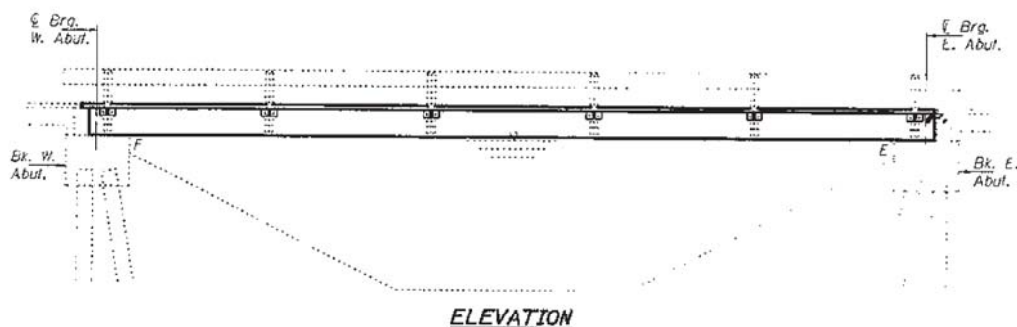


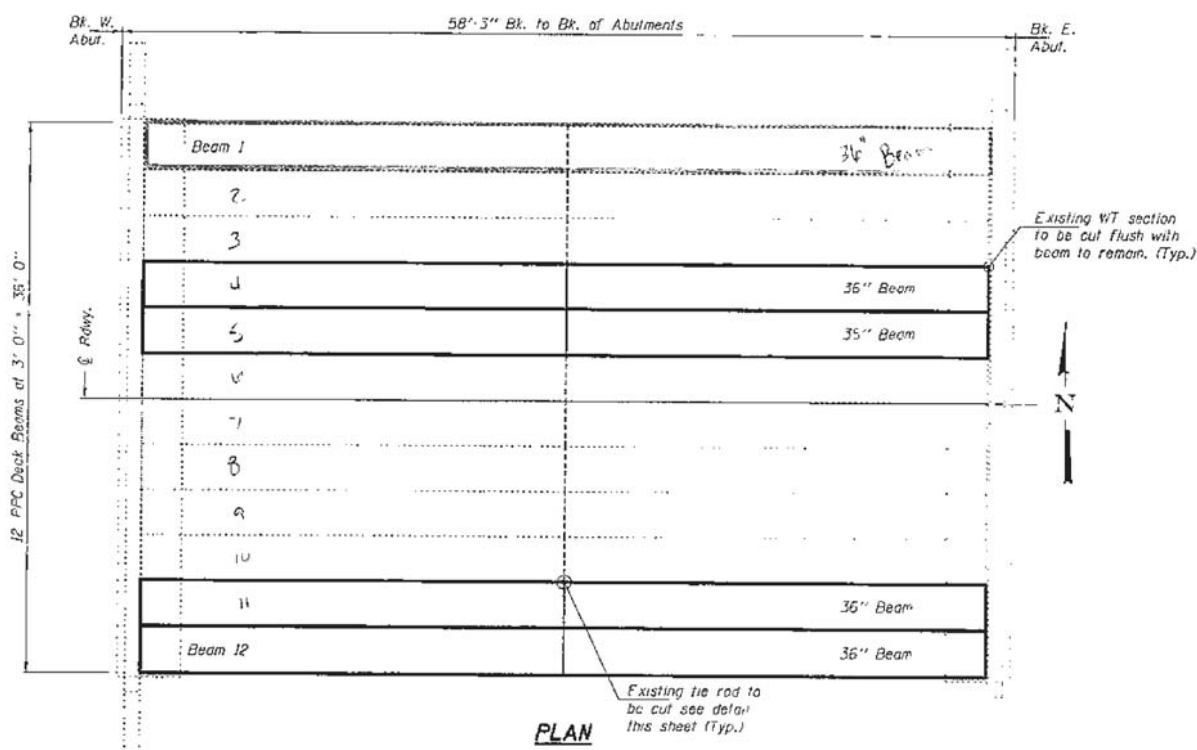
STATE OF ILLINOIS
DEPARTMENT OF TRANSPORTATION

ROUTE NO.	SECTION	COUNTY	SHEET NO.	TOTAL SHEETS
FAP 681	(113BR)	LIVINGSTON	15	11

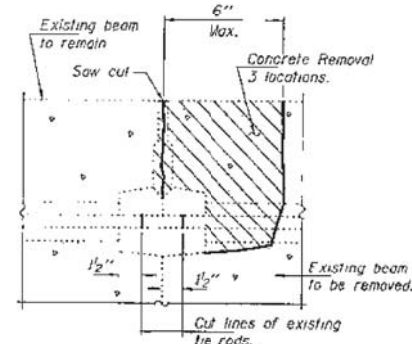
Contract Number: 66B21



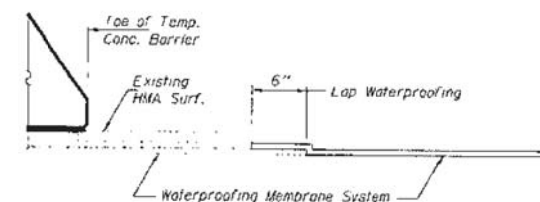
ELEVATION



PLAN



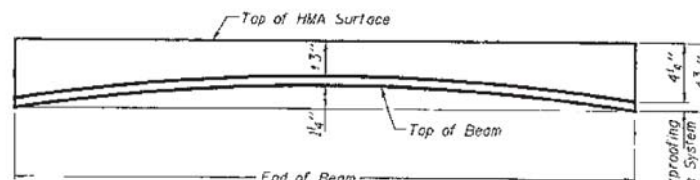
BEAM REMOVAL DETAIL AT TRANSVERSE TIES



WATERPROOFING TREATMENT

TOTAL BILL OF MATERIAL

ITEM	UNIT	QUANTITY
Removal of Existing PPC Deck Beams	Sq. Ft.	661
Precast Prestressed Concrete Deck Beams (21" Depth)	Sq. Ft.	657
Hot Mix Asphalt Surface Removal	Sq. Yd.	9.9
HMA Surface Course Mix "C" N50	Tons	17.0
PC Mortar Furring Course	Foat	276
Asbestos Bearing Pad Removal	Each	4
Removing & Re-erecting Existing Railing	Foat	59
Waterproofing Membrane System	Sq. Yd.	83.4



ANTICIPATED INITIAL CAMBER DIAGRAM

DESIGN STRESSES
PRECAST PRESTRESSED UNITS
f'c = 6,000 psi
f'ci = 5,000 psi
f's = 270,000 psi (1/2" low lax strands)
f'si = 201,960 psi (1/2" low lax strands)

PLAN AND ELEVATION
FAP 681
LIVINGSTON COUNTY
SN 053-0159



DESIGNED: Adrian I. Hallway
CHECKED: [Signature]
DRAWN: [Signature]
CHECKED: [Signature]

MAY 12, 2008
EXAMINED: [Signature]
PASSED: [Signature]

deck_beams_fy05\0530159.dgn 5/12/2008 3:48:27 PM