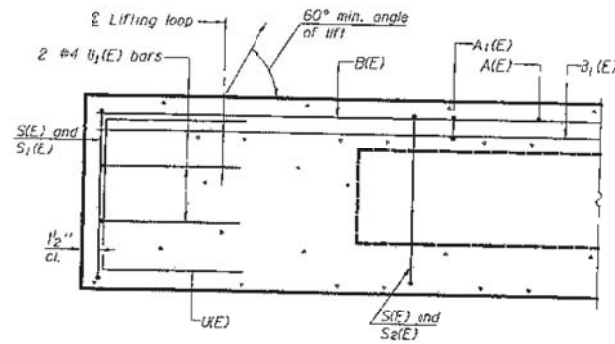
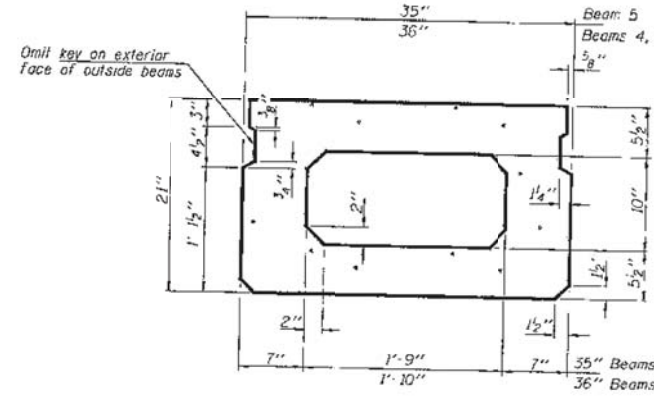


STATE OF ILLINOIS
DEPARTMENT OF TRANSPORTATION

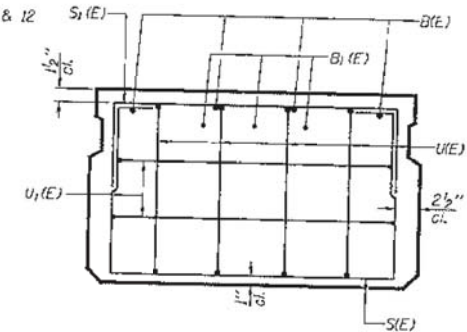
PROJECT NO.	SECTION	DATE	DATE	PAGE	SHEET NO. 2
FAP 681	(113BR1)	LIVINGSTON	15	12	5 SHEETS
Contract Number: 66821					



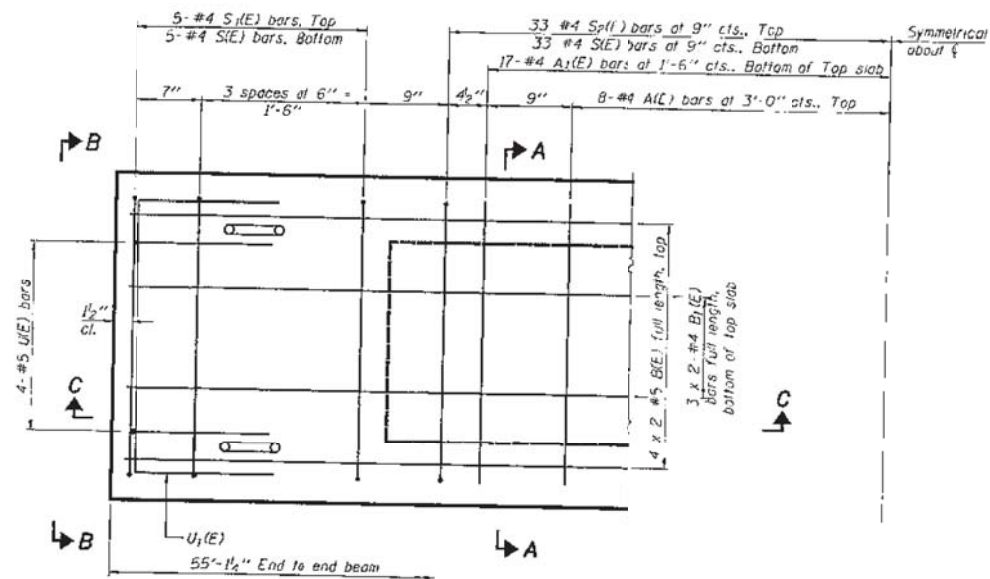
SECTION C-C



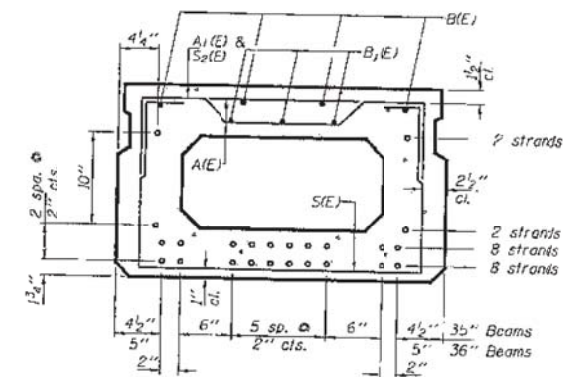
SECTION A-A
(Showing dimensions)



VIEW B-B



PLAN VIEW



SECTION A-A
(Showing reinforcement and permissible strand locations)

Note: Place the number of strands specified in each row symmetrically about the centerline of beam in the permissible strand locations shown.

BAR LIST 35" BEAM ONLY

(For information only)

Bar	No.	Size	Length	Shape
A1(E)	16	#4	2'-6"	—
A1(E)	34	#4	2'-10"	—
B1(E)	8	#5	28'-7"	—
B1(E)	6	#4	28'-4"	—
S1(E)	76	#4	6'-4"	□
S1(E)	10	#4	5'-6"	□
S2(E)	66	#4	5'-9"	□
U1(E)	8	#5	4'-0"	□
U1(E)	4	#4	4'-11"	□

BAR LIST 36" BEAM ONLY

(For information only)

Bar	No.	Size	Length	Shape
A1(E)	16	#4	2'-7"	—
A1(E)	34	#4	2'-11"	—
B1(E)	8	#5	28'-7"	—
B1(E)	6	#4	28'-4"	—
S1(E)	76	#4	6'-5"	□
S1(E)	10	#4	5'-7"	□
S2(E)	66	#4	5'-10"	□
U1(E)	8	#5	4'-0"	□
U1(E)	4	#4	5'-0"	□

MINIMUM BAR LAPS

#4 bar = 1'-8"
#5 bar = 2'-2"

Note: See sheet 3 of 5 for additional details and Bill of Material.
Bars indicated thus 4 x 2-#5 etc. indicates 4 lines of bars with 2 lengths per line.

REPAIR DETAILS
FAP 681
LIVINGSTON COUNTY
SN 053-0159

DESIGNED	ATH	EXAMINED	MAY 12, 2008
CHECKED	AJB	PASSED	<i>Ralph E. Anderson</i>
DRAWN	baliva		
CHECKED	ATH, AJB		

PD-2136-0 8-29-07

\\deck_beams_fy08\0530159.dgn 5/12/2008 3:48:27 PM