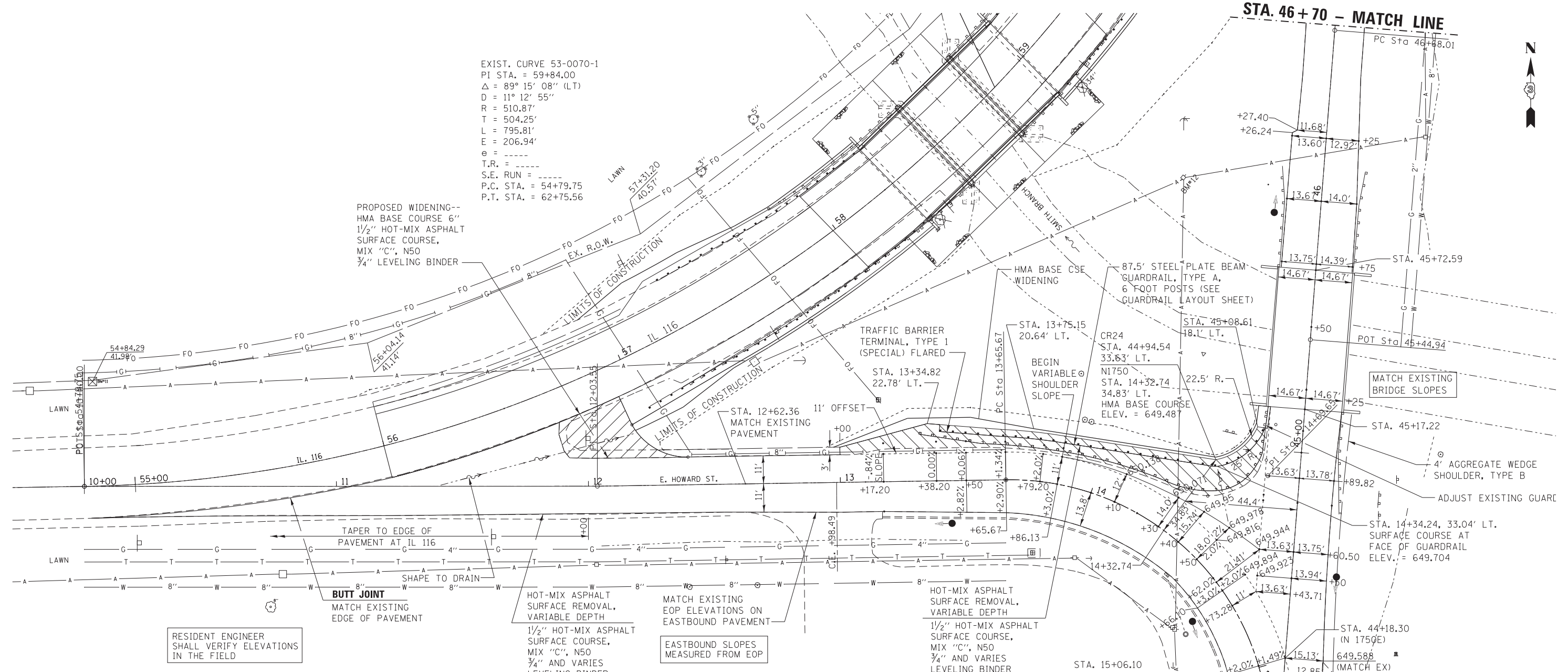


STA. 46+70 - MATCH LINE



EXIST. CURVE 53-0070-1
 PI STA. = 59+84.00
 $\Delta = 89^\circ 15' 08''$ (LT)
 $D = 11^\circ 12' 55''$
 $R = 510.87'$
 $T = 504.25'$
 $L = 795.81'$
 $E = 206.94'$
 $e = \text{-----}$
 T.R. = -----
 S.E. RUN = -----
 P.C. STA. = 54+79.75
 P.T. STA. = 62+75.56

PROPOSED WIDENING--
 HMA BASE COURSE 6"
 1 1/2" HOT-MIX ASPHALT
 SURFACE COURSE,
 MIX "C", N50
 3/4" LEVELING BINDER



RESIDENT ENGINEER
 SHALL VERIFY ELEVATIONS
 IN THE FIELD

STATION	EASTBOUND SLOPE FROM EOP %	CENTERLINE	WESTBOUND SLOPE FROM CENTERLINE %	WESTBOUND 11' OFFSET FROM CENTERLINE	WESTBOUND VARIABLE OFFSET FROM CENTERLINE	WESTBOUND EDGE OF HMA WIDENING (ON SURFACE COURSE)	WESTBOUND WIDENING ELEVATIONS*
13+00.00	MATCH EXISTING	650.290	MATCH EXISTING	650.122			
13+17.20	2.60	650.202	-0.84	650.109		649.943	
13+38.20	2.76	650.107	0.00	650.110		649.880	
13+50.00	2.82	650.050	0.06	650.110			649.961
13+65.67	2.90	650.059	1.34	650.206			650.084
13+79.20	2.97	650.044	2.00	650.264			650.153
13+86.13	3.00	649.991	2.00	650.211			650.100
14+00.00	3.00	649.910	2.00		650.140		
14+10.00	3.00	649.898	2.00		650.138		
14+30.00	3.00	649.791	2.00		650.071		
14+40.00	3.00	649.704	2.00		649.950		
14+50.00	3.00	649.618	2.00		649.816	649.978	
14+66.10	3.00	649.674	2.00		649.894		
14+99.39	2.00	649.738	1.49		649.902		
15+07.89	1.95	649.757	0.32		649.793		
15+29.66	MATCH EXISTING	649.852	MATCH EXISTING				

* ON SURFACE COURSE AT FACE OF GUARDRAIL

EXIST. CURVE CR-24
 PI STA. = 14+69.65
 $\Delta = 90^\circ 37' 17''$ (RT)
 $D = 55^\circ 42' 24''$
 $R = 102.85'$
 $T = 103.97'$
 $L = 162.68'$
 $E = 43.40'$
 $e = \text{-----}$
 T.R. = -----
 S.E. RUN = -----
 P.C. STA. = 13+65.67
 P.T. STA. = 15+28.35

MATCH EXISTING ELEVATIONS FOR SOUTHBOUND EOP FROM STA. 15+29.66 TO SOUTH



FILE NAME =	USER NAME = Schwkerng	DESIGNED -	REVISED -
cs:\pwwork\pwwork\schwknrg\dms31786\0366832-shr-plan&prof-053-0070-Detour.dgn		DRAWN -	REVISED -
		CHECKED -	REVISED -
		DATE -	REVISED -

STATE OF ILLINOIS
 DEPARTMENT OF TRANSPORTATION

DETOUR PLAN VIEW			
SCALE:	SHEET NO.	OF SHEETS	STA. TO STA.

F.A.P. RTE.	SECTION	COUNTY	TOTAL SHEETS	SHEET NO.
681	(113 BR) & (113 BR-1)BR	LIVINGSTON	123	80
CONTRACT NO. 66832				
ILLINOIS FED. AID PROJECT				