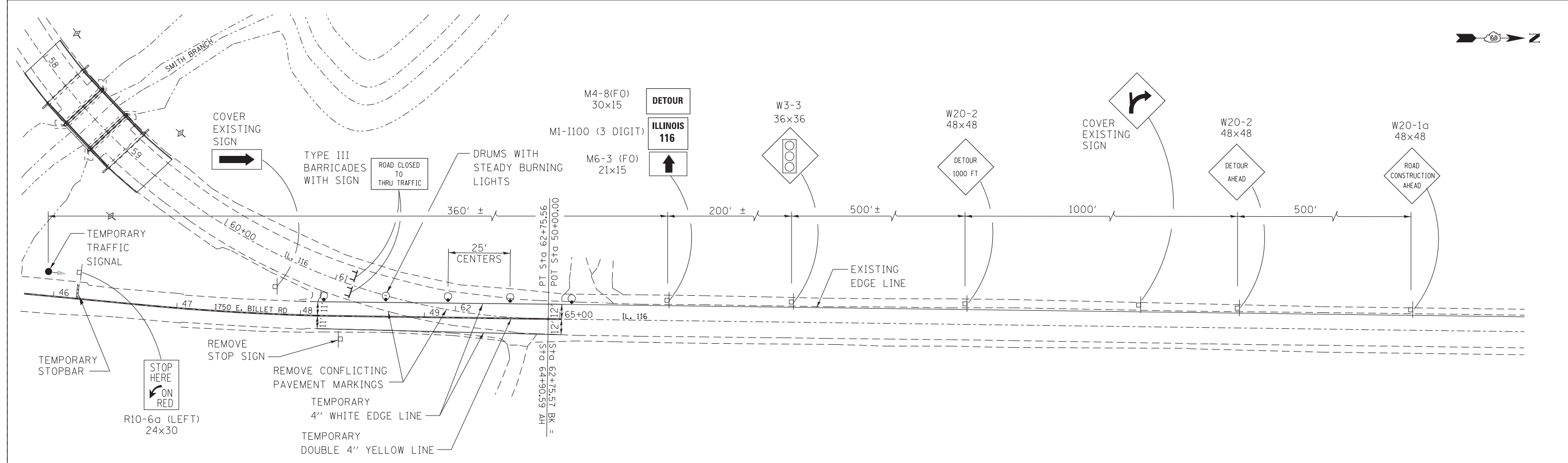
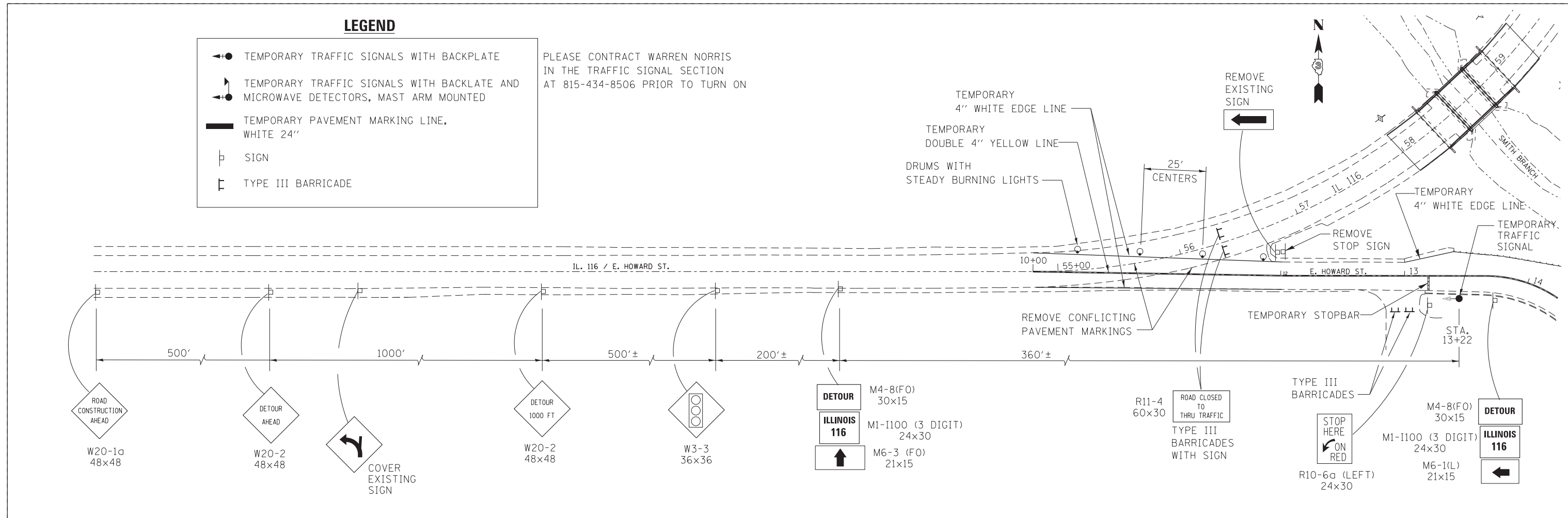


LEGEND

- ◀● TEMPORARY TRAFFIC SIGNALS WITH BACKPLATE
- ▶● TEMPORARY TRAFFIC SIGNALS WITH BACKPLATE AND MICROWAVE DETECTORS, MAST ARM MOUNTED
- ▬ TEMPORARY PAVEMENT MARKING LINE, WHITE 24"
- ⊥ SIGN
- ⊥ TYPE III BARRICADE

PLEASE CONTRACT WARREN NORRIS IN THE TRAFFIC SIGNAL SECTION AT 815-434-8506 PRIOR TO TURN ON



FILE NAME =	USER NAME = Schwankerg	DESIGNED -	REVISED -
ct:\pw\work\p1dot\schwankerg\dms31786\066832-shr-SN05300070-detail.dgn		DRAWN -	REVISED -
		CHECKED -	REVISED -
		DATE -	REVISED -

**STATE OF ILLINOIS
DEPARTMENT OF TRANSPORTATION**

**IL 116
TRAFFIC CONTROL DETAIL**

F.A.P. RTE.	SECTION	COUNTY	TOTAL SHEETS	SHEET NO.
681	(113 BR1BR & (113 BR-1)BR	LIVINGSTON	123	83
CONTRACT NO. 66832				

SCALE: SHEET OF SHEETS STA. TO STA.

ILLINOIS FED. AID PROJECT