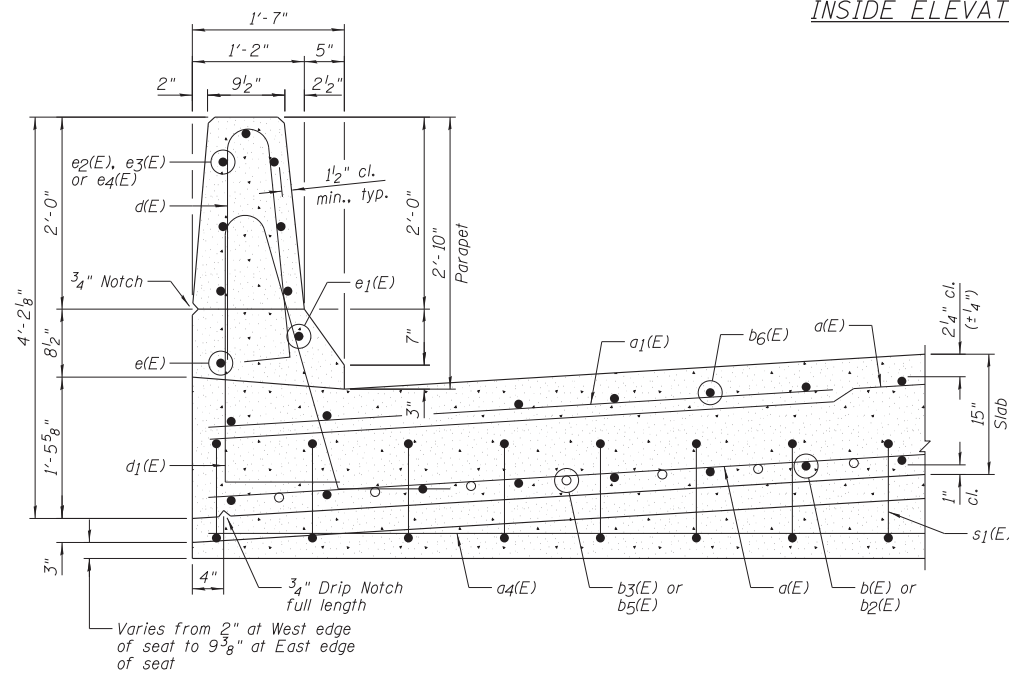


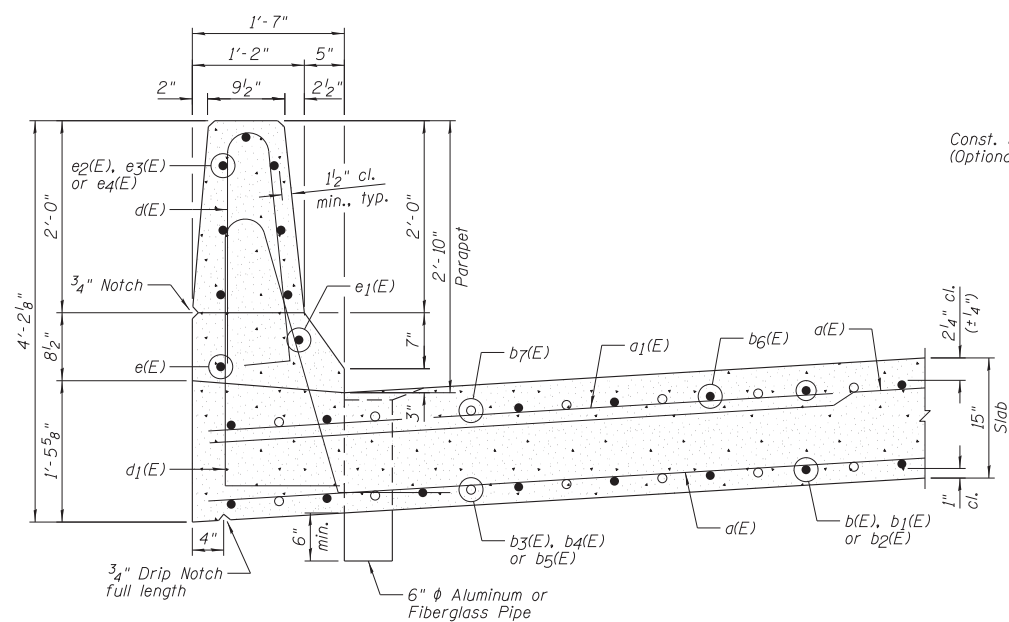
INSIDE ELEVATION OF PARAPET

BAR LAP

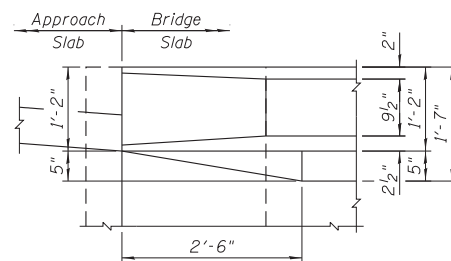
#4	2'-0"
#8	5'-2"



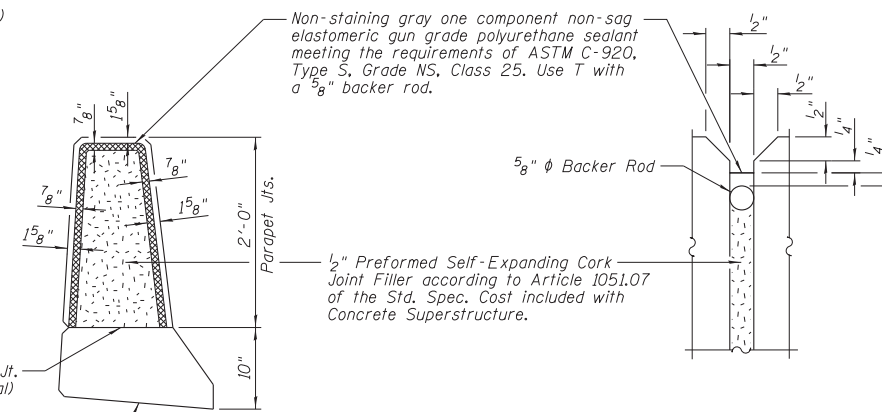
SECTION THRU PARAPET - NEAR ABUTMENT



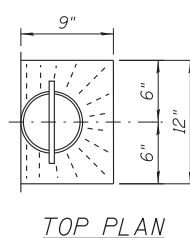
SECTION THRU PARAPET - NEAR MIDSPAN



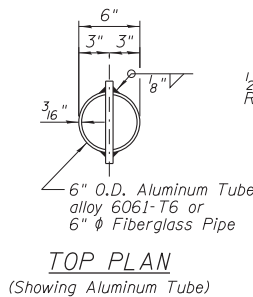
DETAIL A



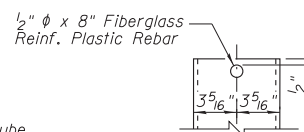
PARAPET JOINT DETAILS



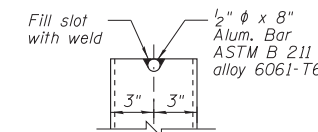
TOP PLAN



TOP PLAN (Showing Aluminum Tube)



FIBERGLASS PIPE



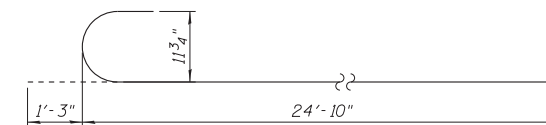
ALUMINUM TUBE

NOTES:

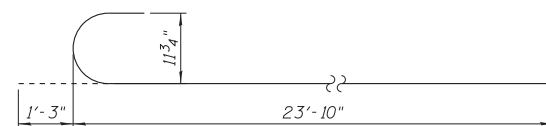
- Fiberglass pipe shall conform to ASTM D2996, with short-time rupture strength hoop tensile stress of 30,000 p.s.i. minimum.
- The exterior surfaces of the floor drains shall be coated or pigmented by the manufacturer with a color that matches the concrete.

NOTES:

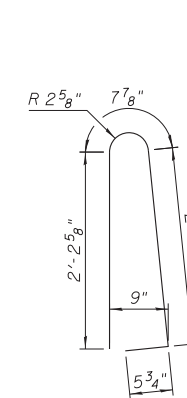
- B.F. denotes Back Face and F.F. denotes Front Face.
- Inside Elevation of Parapet view is exaggerated vertically to show reinforcement.
- Bars indicated thus 1x2-#4 etc. indicates 1 line of bars with 2 lengths per line.



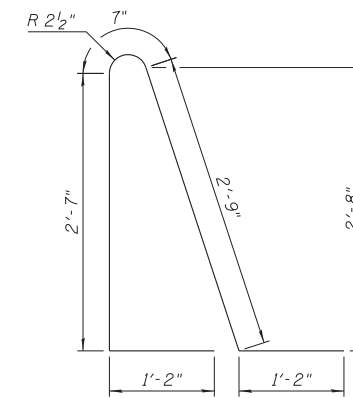
b(E) BAR



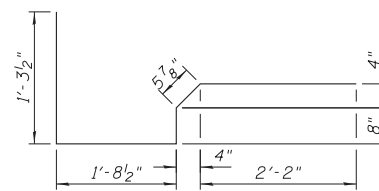
b2(E) BAR



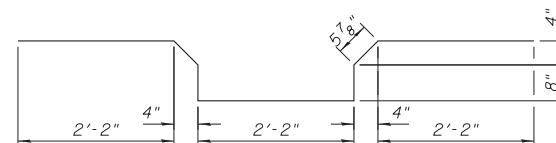
d(E) BAR



d1(E) BAR



s(E) BAR



s1(E) BAR

SUPERSTRUCTURE BILL OF MATERIAL

Bar	No.	Size	Length	Shape
a(E)	144	#5	40'-4"	—
a1(E)	94	#6	6'-6"	—
a4(E)	48	#5	9'-10"	—
b(E)	41	#9	26'-1"	C
b1(E)	41	#9	34'-11"	—
b2(E)	41	#9	25'-1"	C
b3(E)	40	#9	16'-10"	—
b4(E)	40	#9	20'-0"	—
b5(E)	40	#9	15'-10"	—
b6(E)	82	#9	38'-10"	—
b7(E)	80	#9	17'-3"	—
d(E)	158	#5	5'-7"	—
d1(E)	158	#5	8'-3"	—
e(E)	6	#4	25'-3"	—
e1(E)	4	#8	38'-5"	—
e2(E)	28	#4	10'-8"	—
e3(E)	28	#4	14'-2"	—
e4(E)	28	#4	10'-2"	—
s(E)	82	#4	6'-4"	—
s1(E)	82	#4	8'-10"	—
Item		Unit	Quantity	
Concrete Superstructure		Cu. Yd.	161.7	
Reinforcement Bars, Epoxy Coated		Pound	46,430	