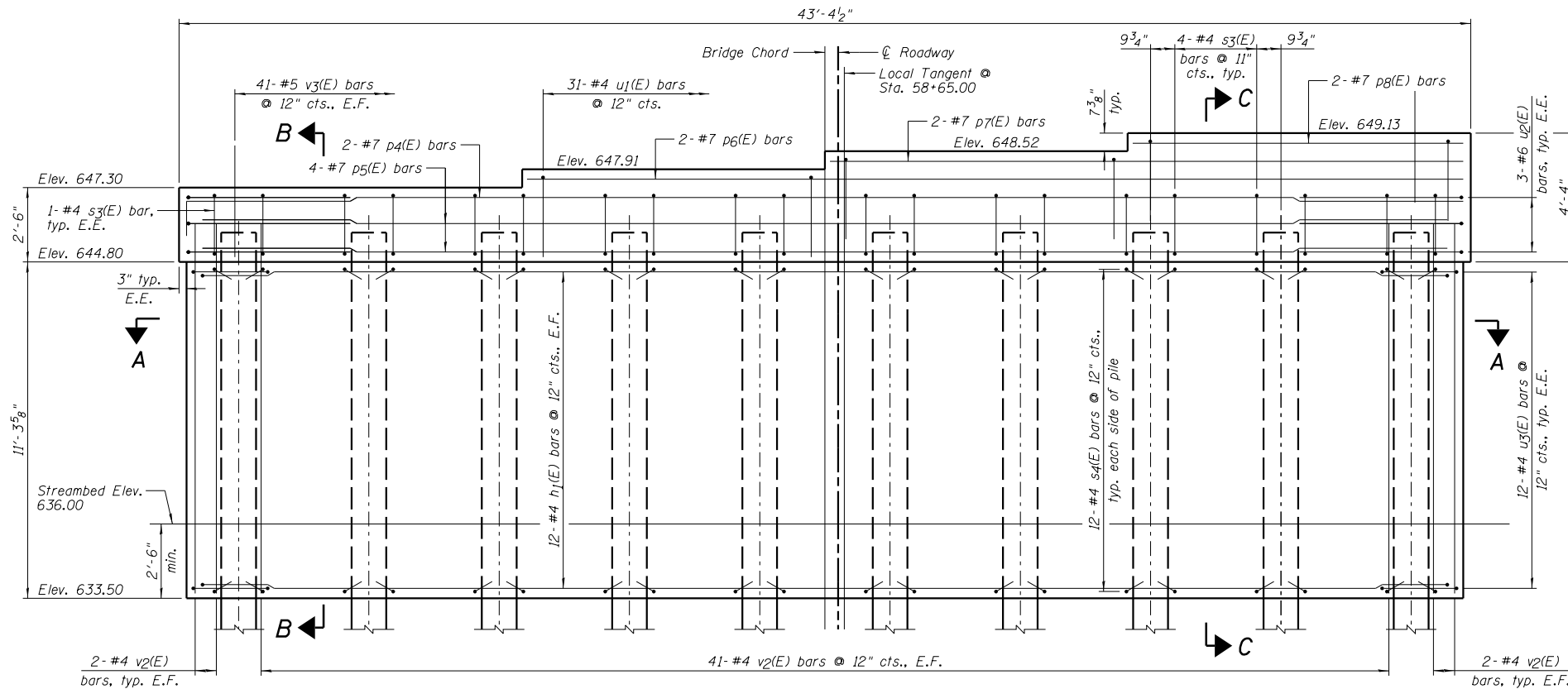
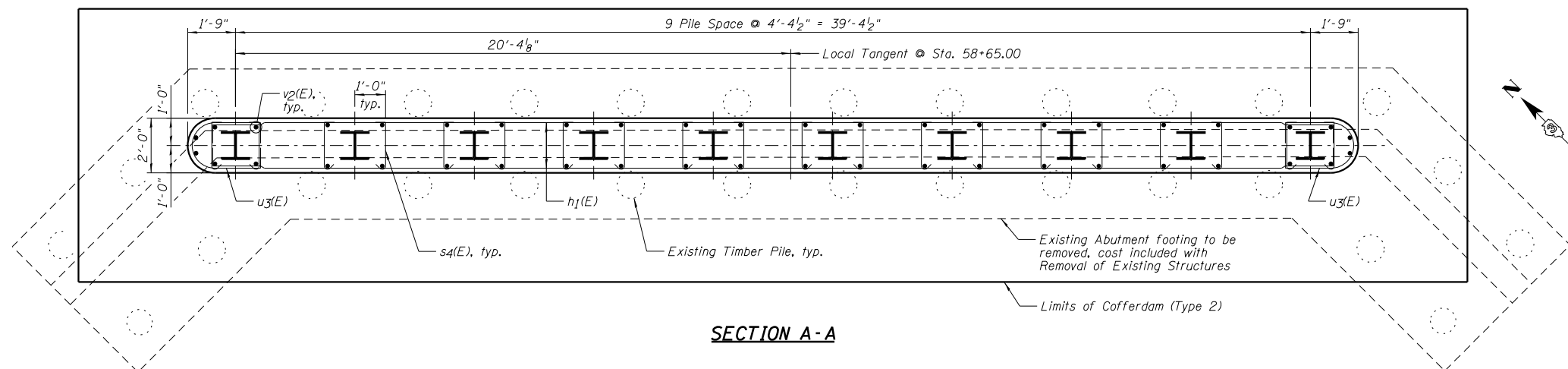


**TOP PLAN**



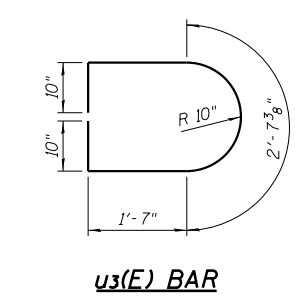
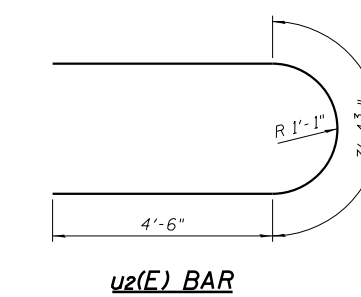
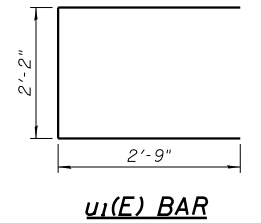
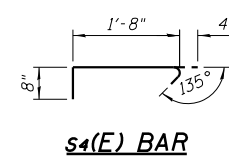
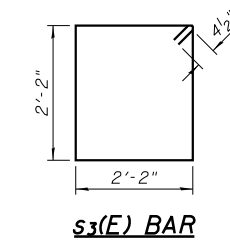
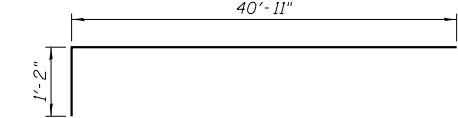
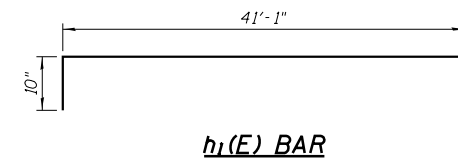
**ELEVATION**  
(Looking North)



**SECTION A-A**

**PIER NO. 1 BILL OF MATERIAL**

Bar	No.	Size	Length	Shape
h1(E)	12	#4	42'-9"	[Diagram]
p4(E)	2	#7	42'-1"	[Diagram]
p5(E)	4	#7	40'-11"	[Diagram]
p6(E)	2	#7	30'-3"	[Diagram]
p7(E)	2	#7	20'-1"	[Diagram]
p8(E)	2	#7	9'-11"	[Diagram]
s3(E)	38	#4	9'-5"	[Diagram]
s4(E)	240	#4	2'-9"	[Diagram]
u1(E)	31	#4	7'-8"	[Diagram]
u2(E)	6	#6	12'-5"	[Diagram]
u3(E)	24	#4	7'-5"	[Diagram]
v2(E)	90	#4	12'-5"	[Diagram]
v3(E)	82	#5	3'-9"	[Diagram]
Item	Unit	Quantity		
Cofferdam Excavation	Cu. Yd.	104		
Cofferdam (Type 2) (Location - 1)	Each	1		
Concrete Structures	Cu. Yd.	49.1		
Seal Coat Concrete	Cu. Yd.	56.5		
Reinforcement Bars, Epoxy Coated	Pound	3,230		
Furnishing Steel Piles HP12x63	Foot	550		
Driving Piles	Foot	550		



**PILE DATA:**

Pile Type and Size	*Steel-HP 12x63 with 3/4" End Plate
Nominal Required Bearing	329 kips
Factored Resistance Available	161 kips
Estimated Pile Length	55 Feet
Number of Production Piles	10
Number of Test Piles	0

\*See weld detail on Sheet B15.

**NOTES:**

- 1.) Pour steps monolithically with cap.
- 2.) E.F. Denotes Each Face and E.E. Denotes Each End.
- 3.) See Sheet B14 for Sections B-B and C-C.